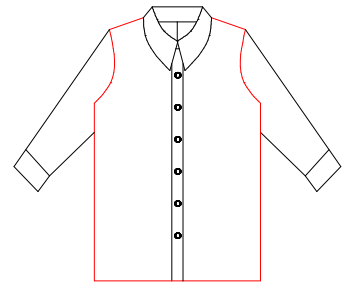
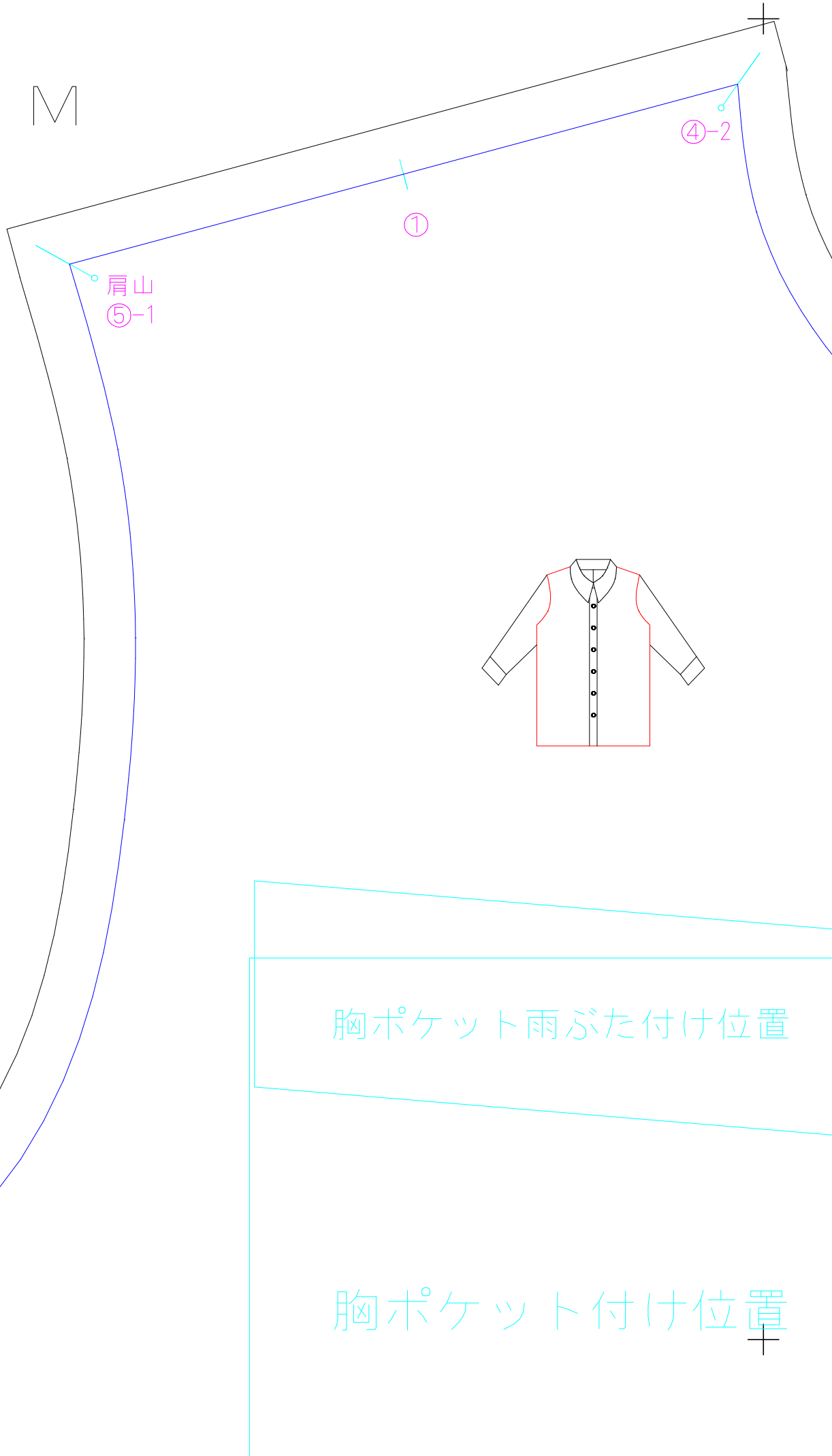


<1>



婦人 M

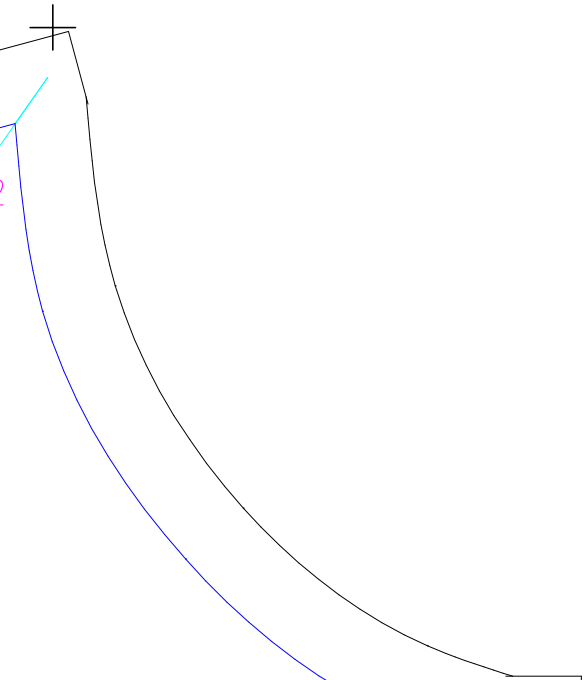
1	2
3	4
5	6



胸ポケット雨ぶた付け位置

胸ポケット付け位置





立置

立置
+

④-3 C

ワークシャツ
持ち出し
婦人 M
2枚

Work shirt



<3>

⑤-2

胸ポケット付け位置

ワークシャツ

前身頃

婦人 M

2枚

Work shirt

Front

Lady's M

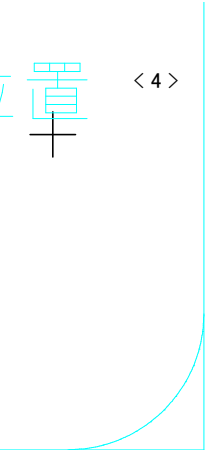
× 2

USAKOの洋裁工房 (<http://yousai.n>)

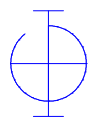
②

seam margin

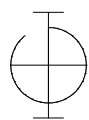
Put the facing material on the reverse of



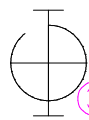
<4>



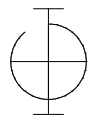
Work shirt
Front facing
Lady's M
× 2



usai.net/)



3



se of thefabri

②

< 5 >

seam margin

Put the facing material on the reverse of

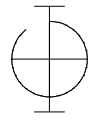
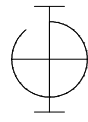
Snip the material as a mark.

お好みの竹をご利用



se of the fabri

をご利用下さい



接着芯を貼る

