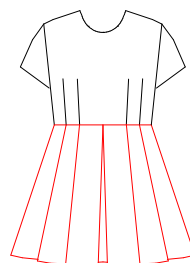


ウエスト切り替えワンピース
前スカート

1枚

婦人M



front skirt

× 1

Lady's M

谷折り Valley Fold

山折り Mountain Fold

谷折り Valley Fold

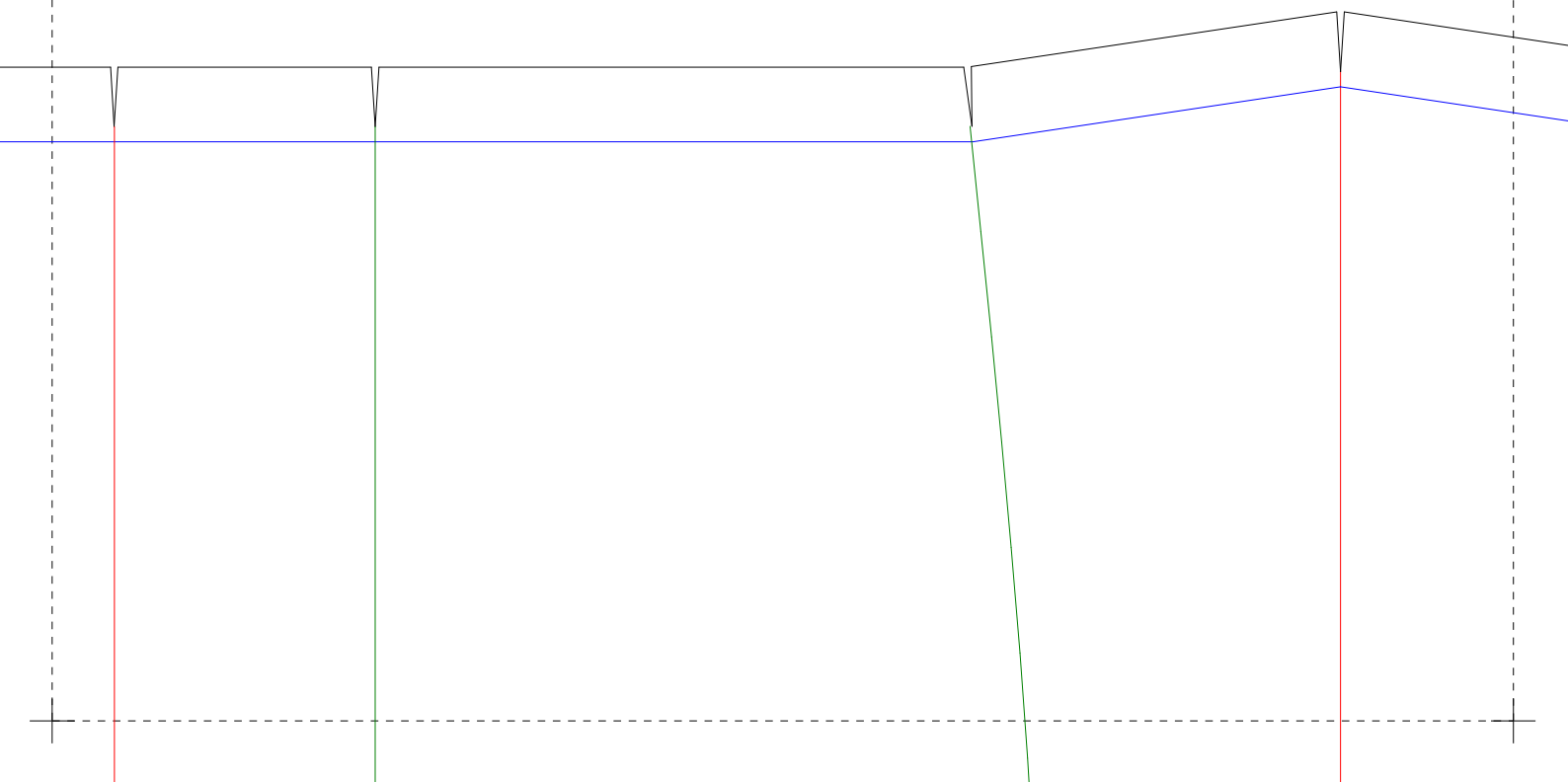
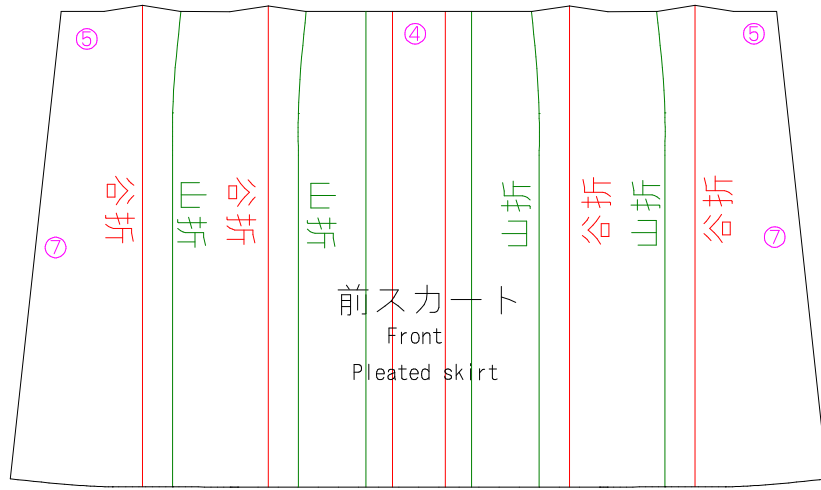


山折り Mountain Fold

山折り Mountain Fold

谷折り Valley Fold

Valley Fold 谷折り

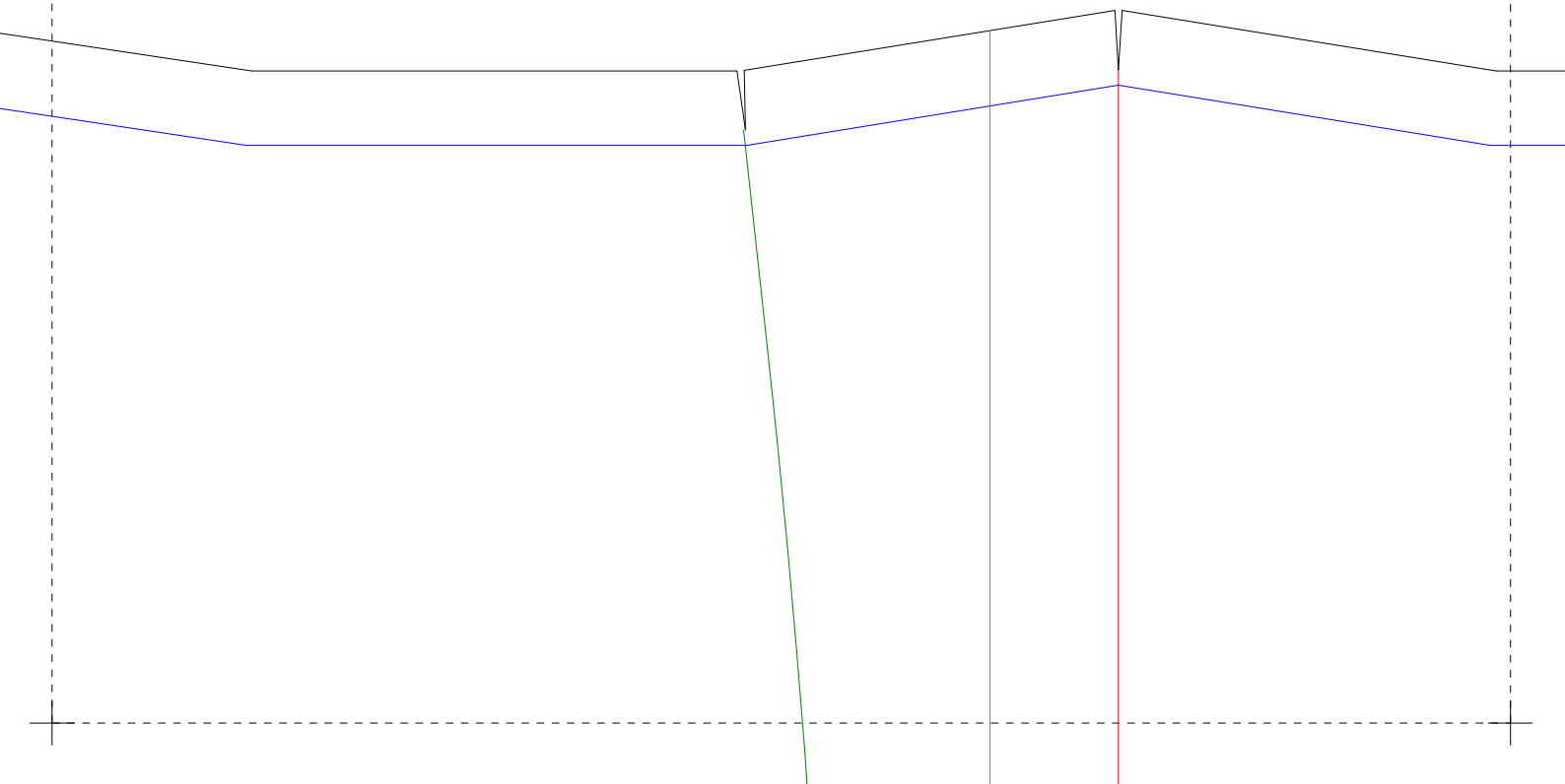
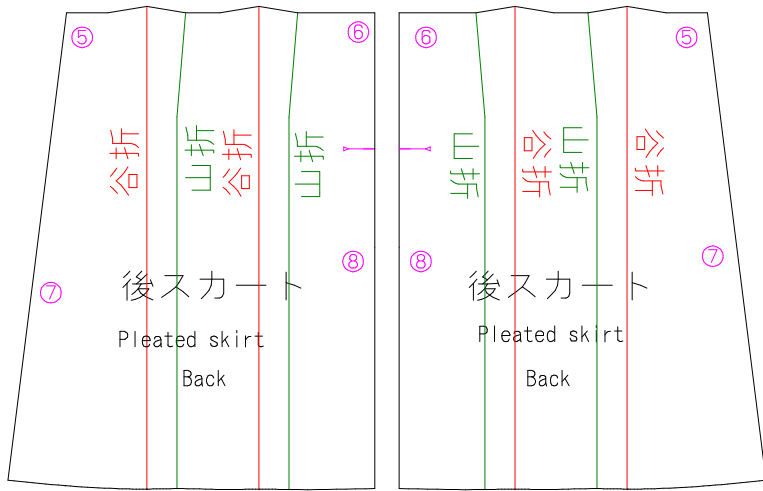


Valley Fold 谷折り

Mountain Fold 山折り

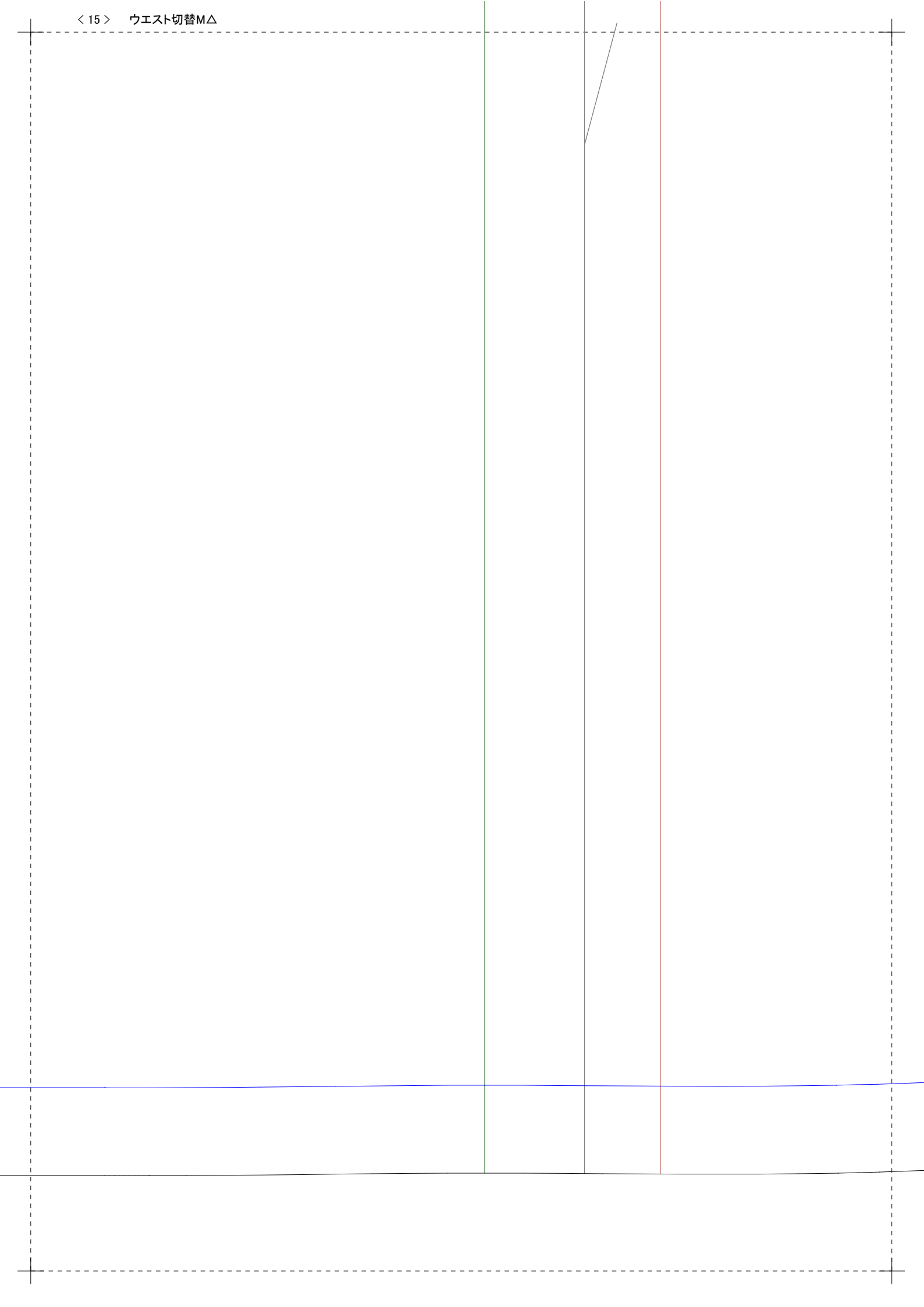
Mountain Fold 山折り

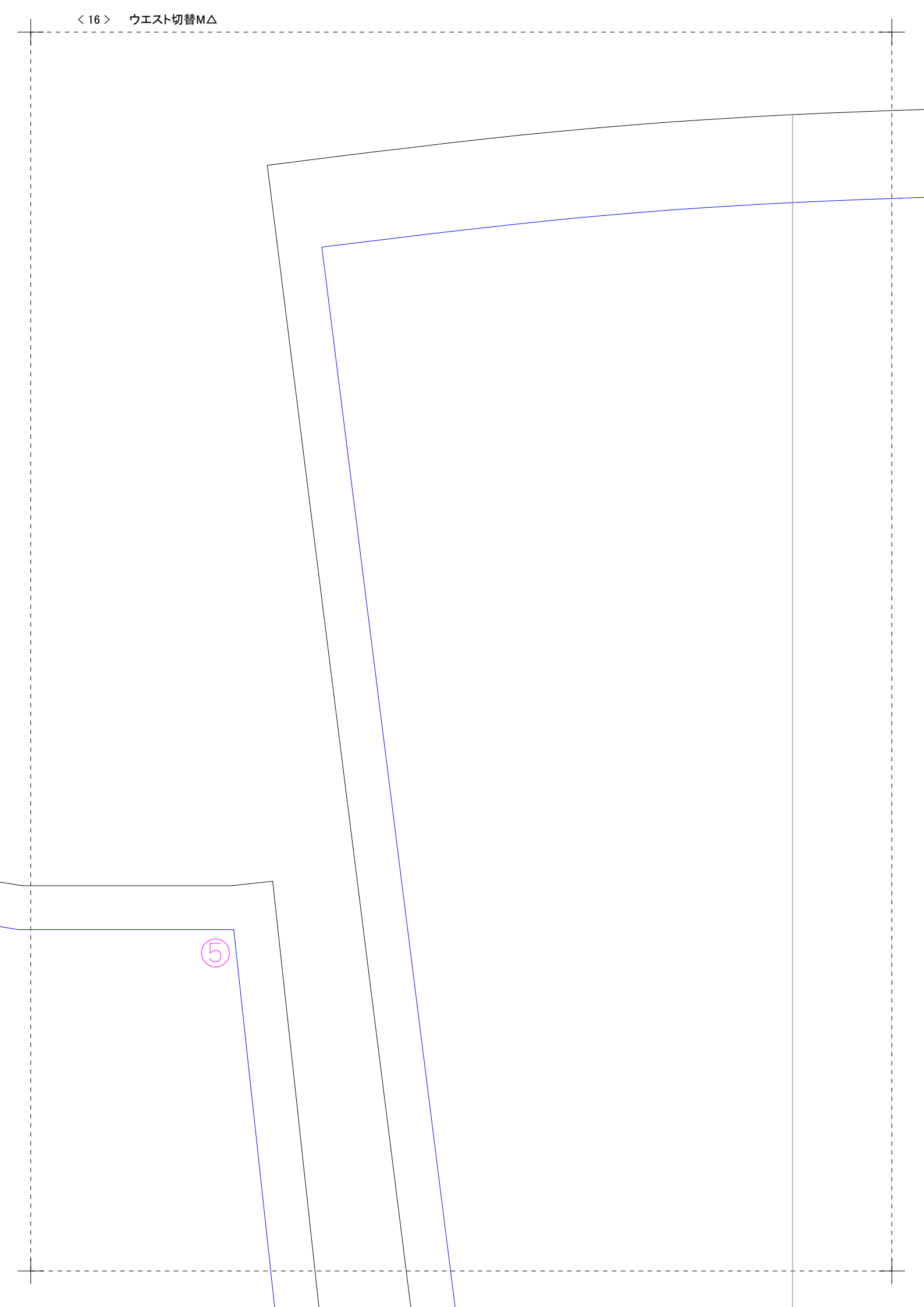
Valley Fold 谷折り

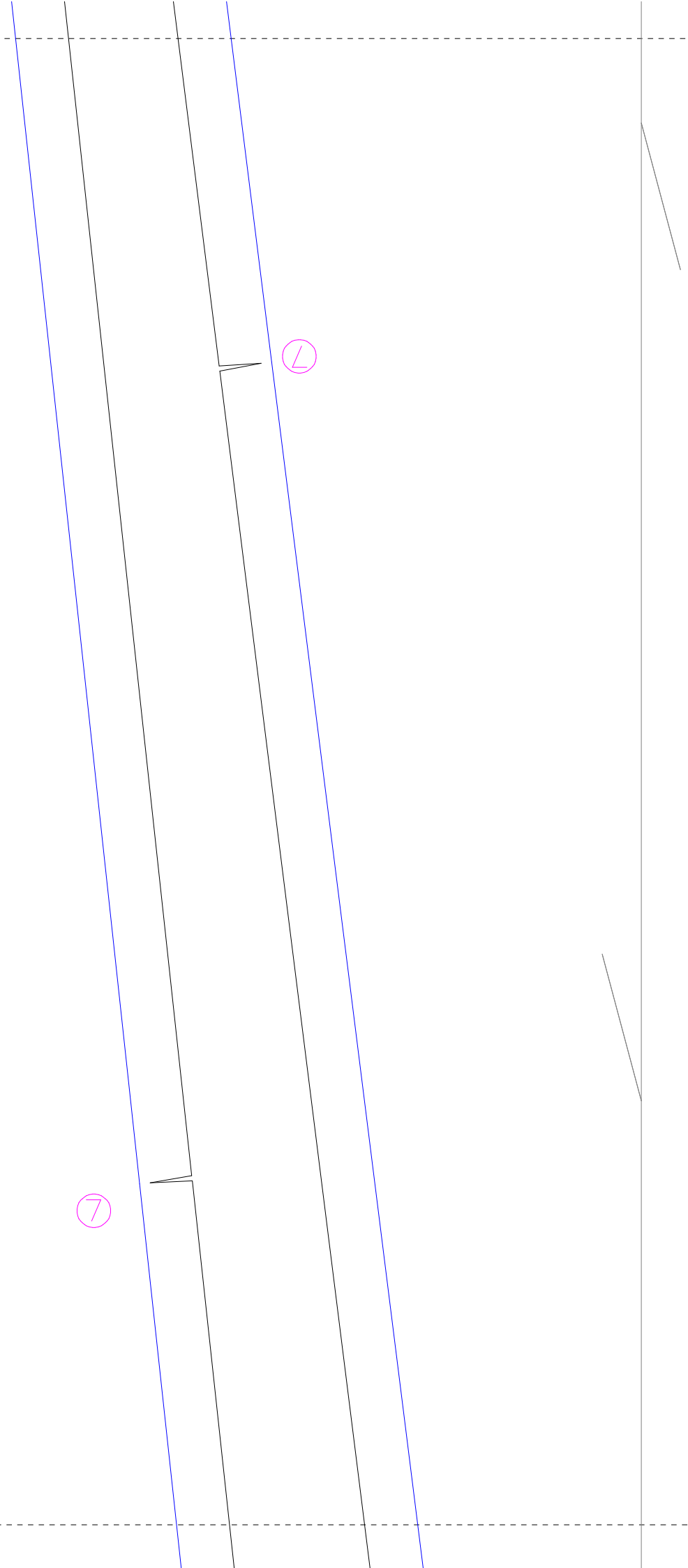


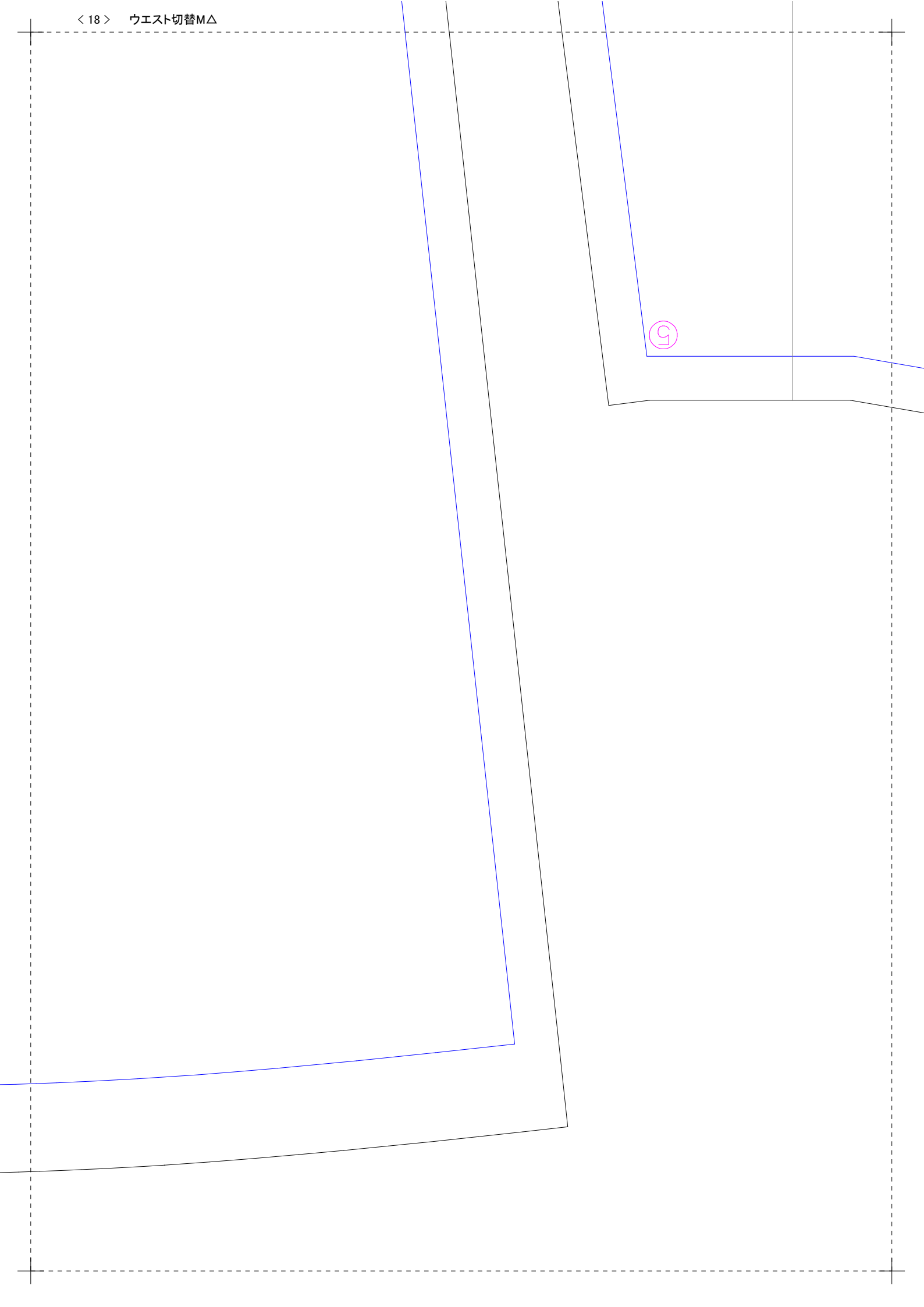
Mountain Fold 山折り

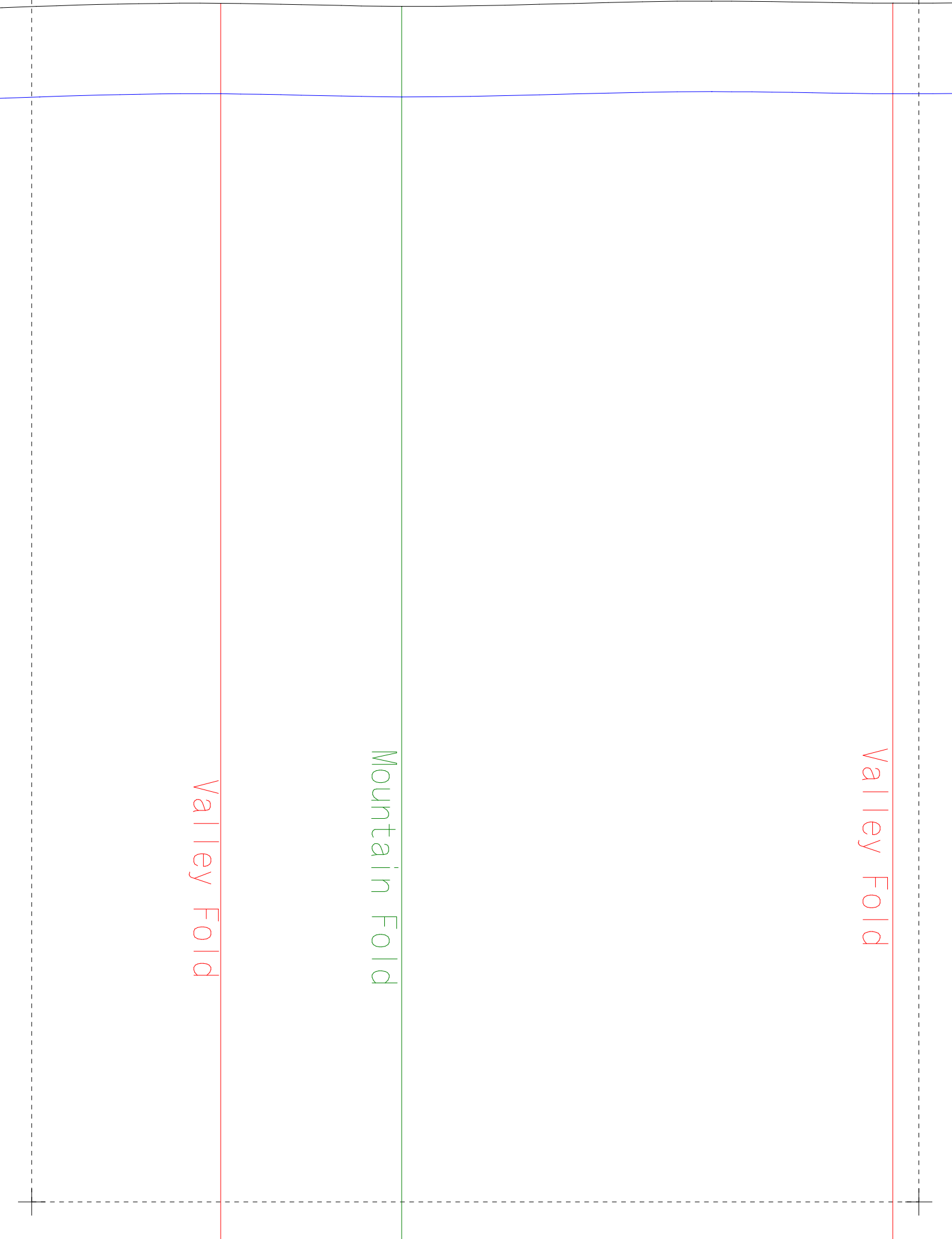
Valley Fold 谷折り







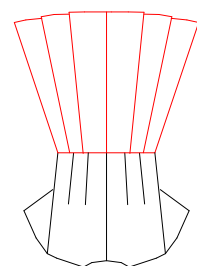




谷折り

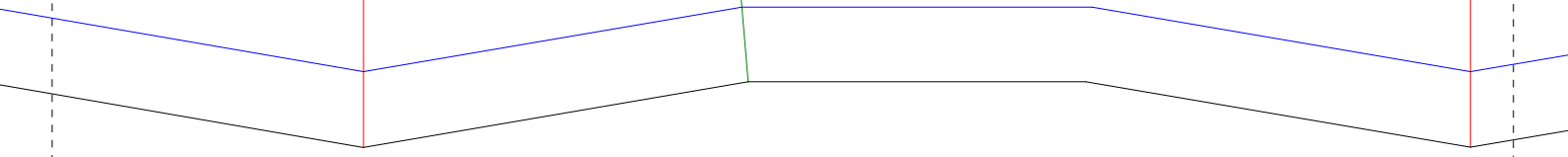
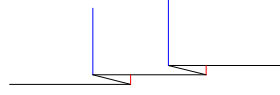
山折り

谷折り



ウエスト切り替えツレ。
 後スカート
 左右対称に2枚
 婦人M
 Back skirt
 × 2 (bilateral symmetry)
 Lady's M

反対側の身頃は
外側に倒します
！ 逆向きに！



Mountain Fold



山折り

←フラスナー付けここまで



