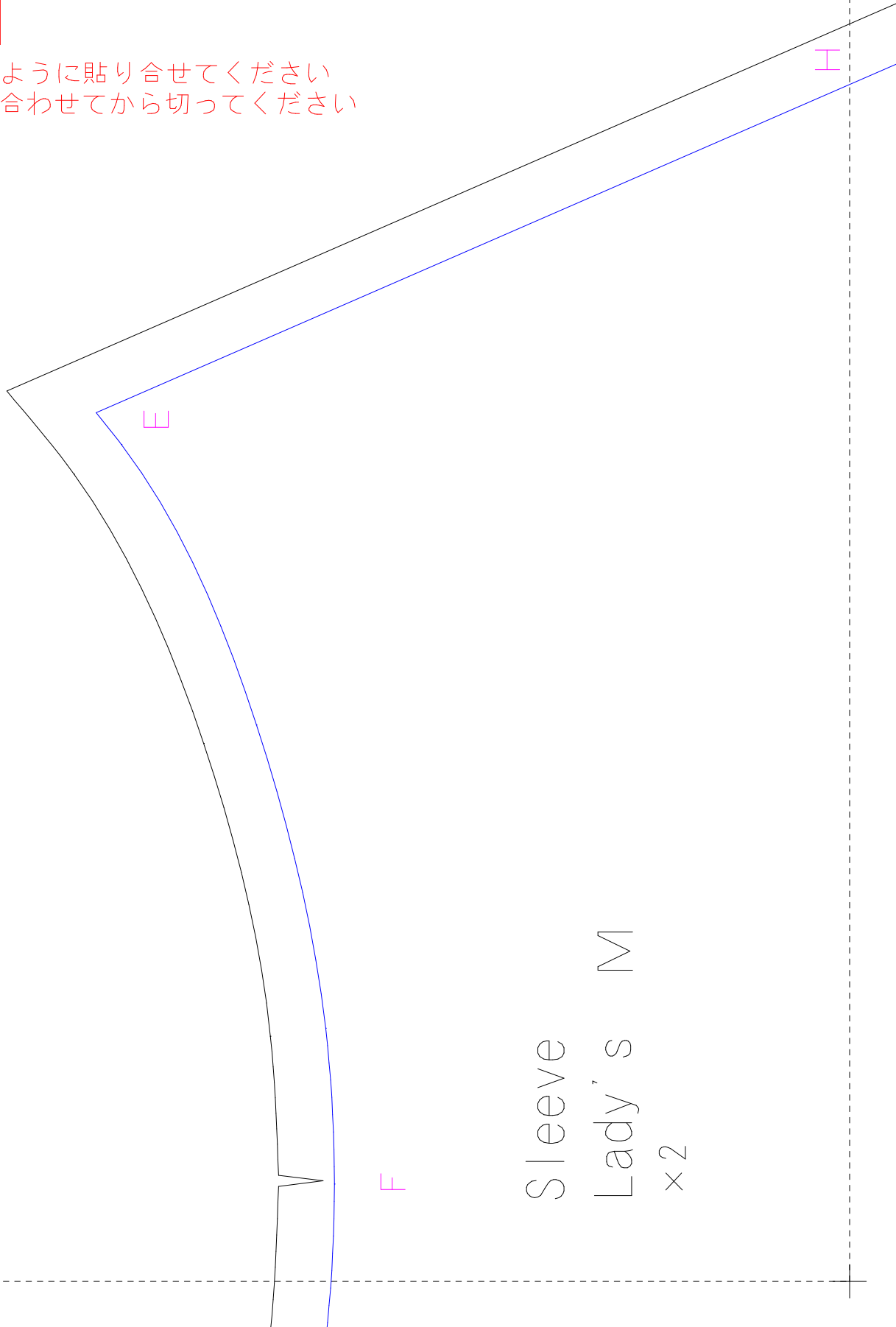


1	2	3	4
5	6	7	8
9	10		

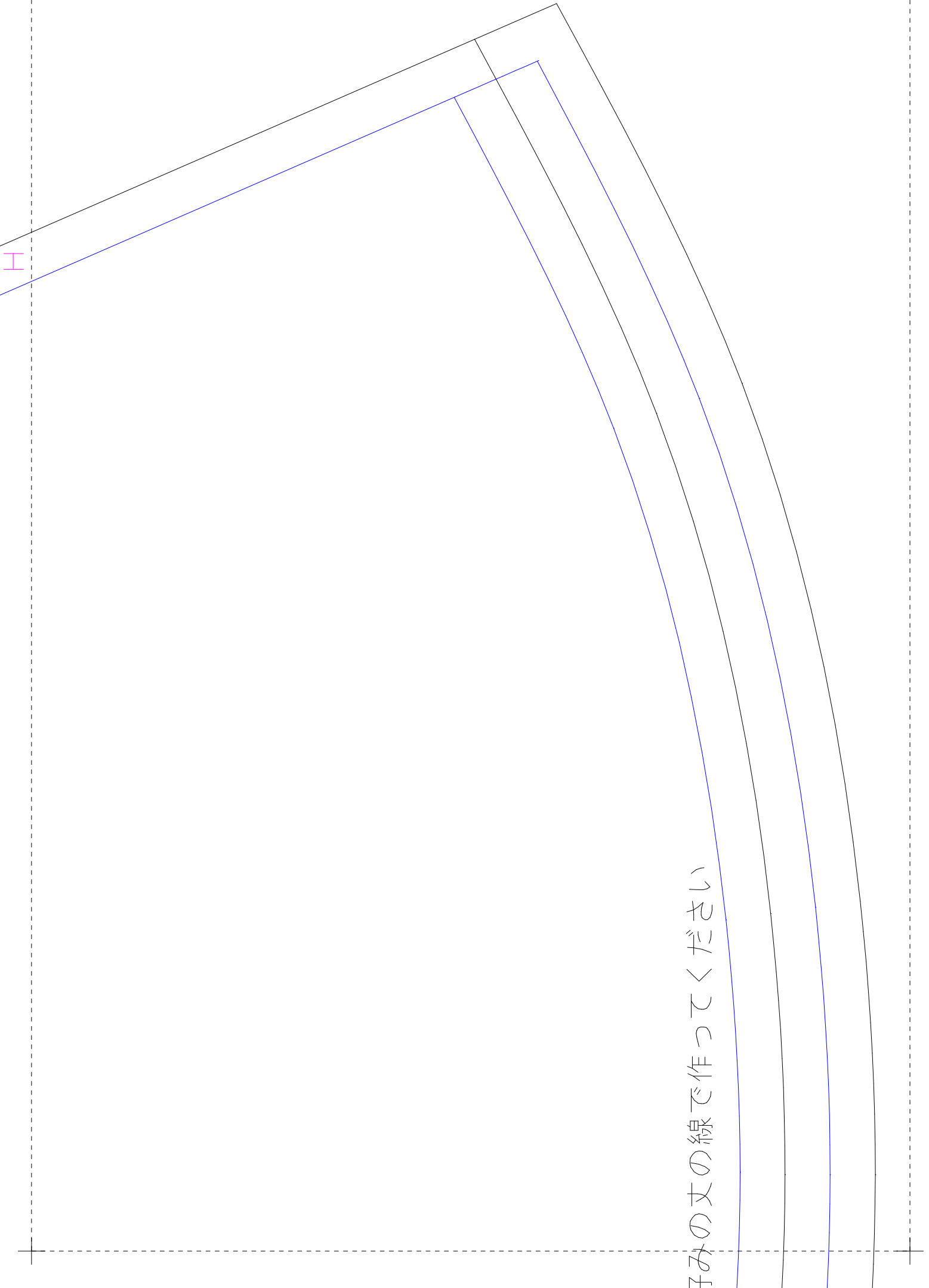
この図のように貼り合せてください
先に貼り合わせてから切ってください

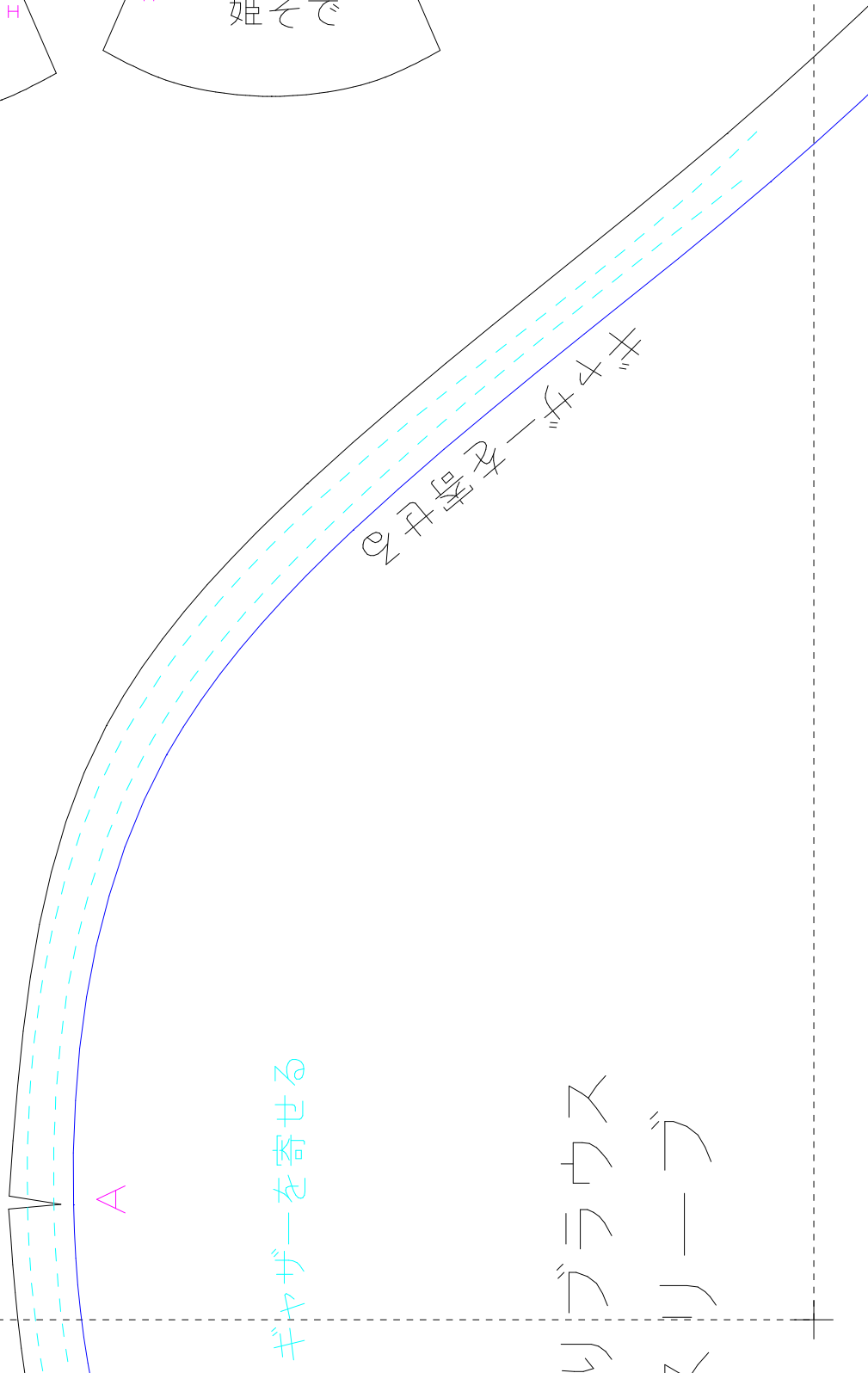
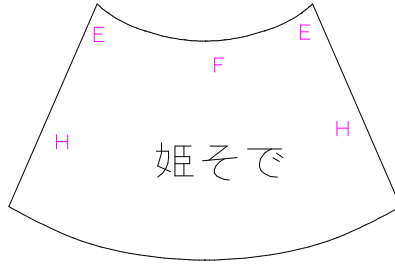
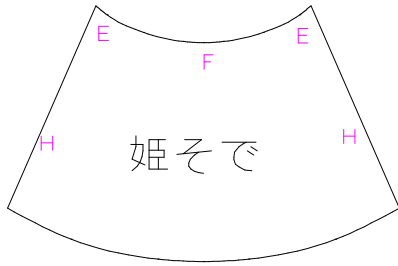
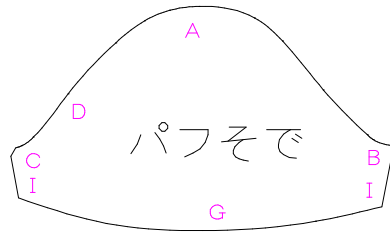
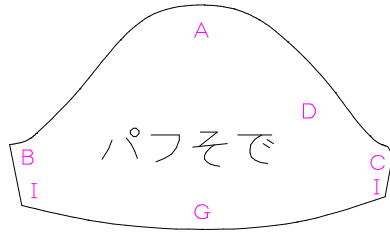


Sleeve
Lady's M
×2

エ

子みの丈の線で作ってください

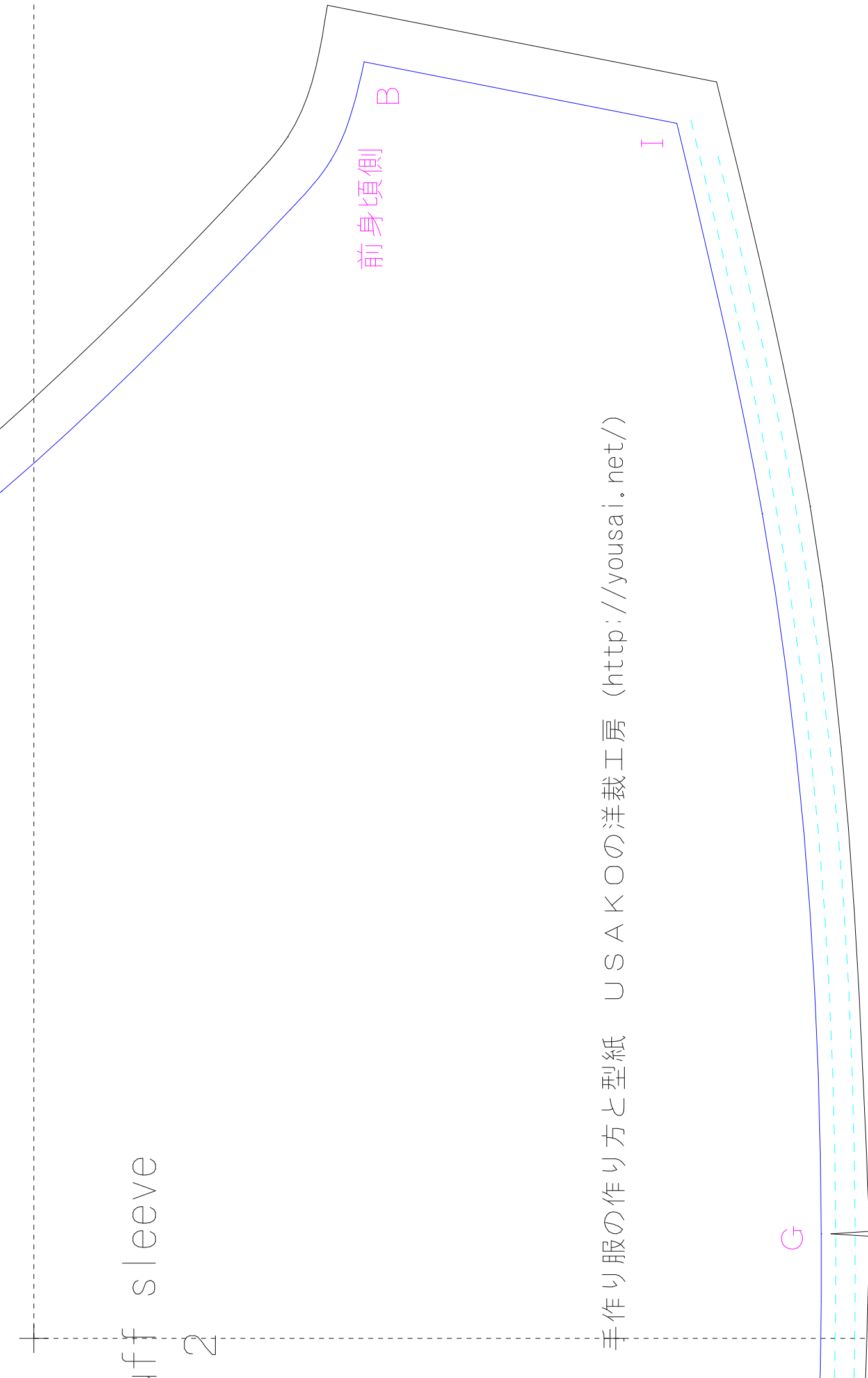




リブラウス
スリーブ

buff sleeve

2



手作り服の作り方と型紙 USAKAOの洋裁工房 (<http://yousai.net/>)

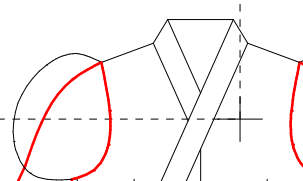
着物えりブラウス
姫そで
×2

E

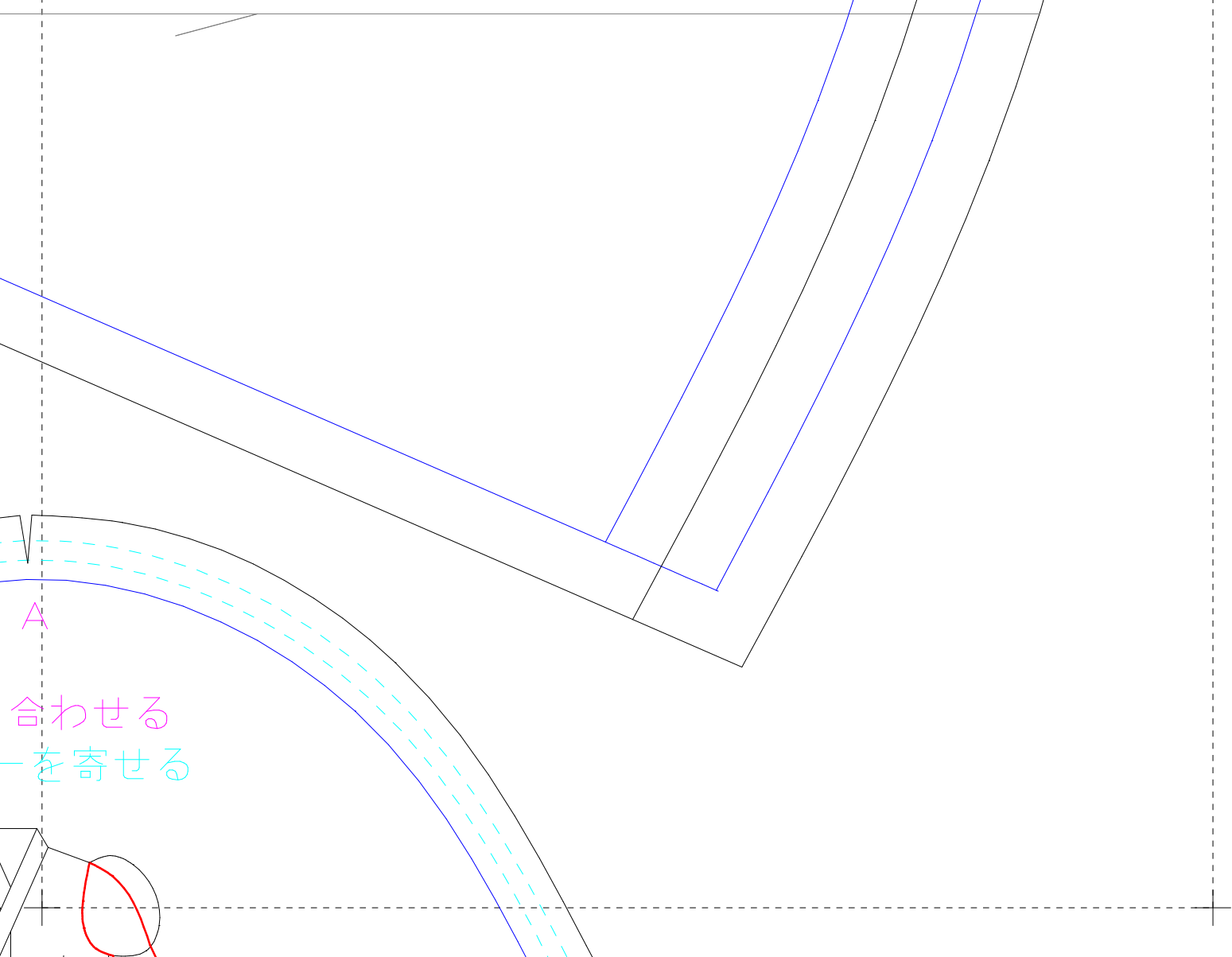
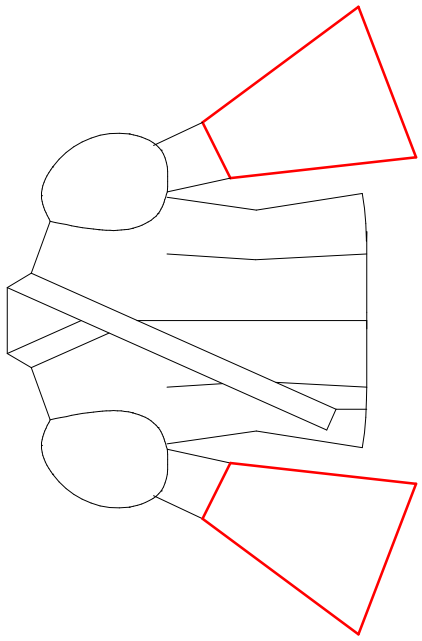
H

A

肩山と合わ
ギャザーを寄

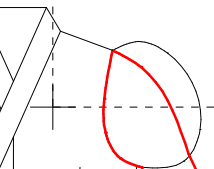


お好みの



A

合わせる
—を寄せる

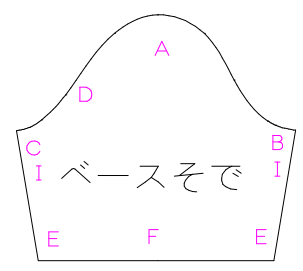
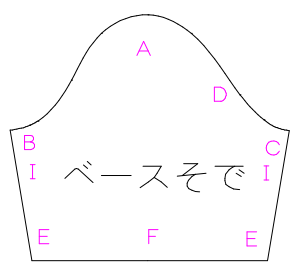
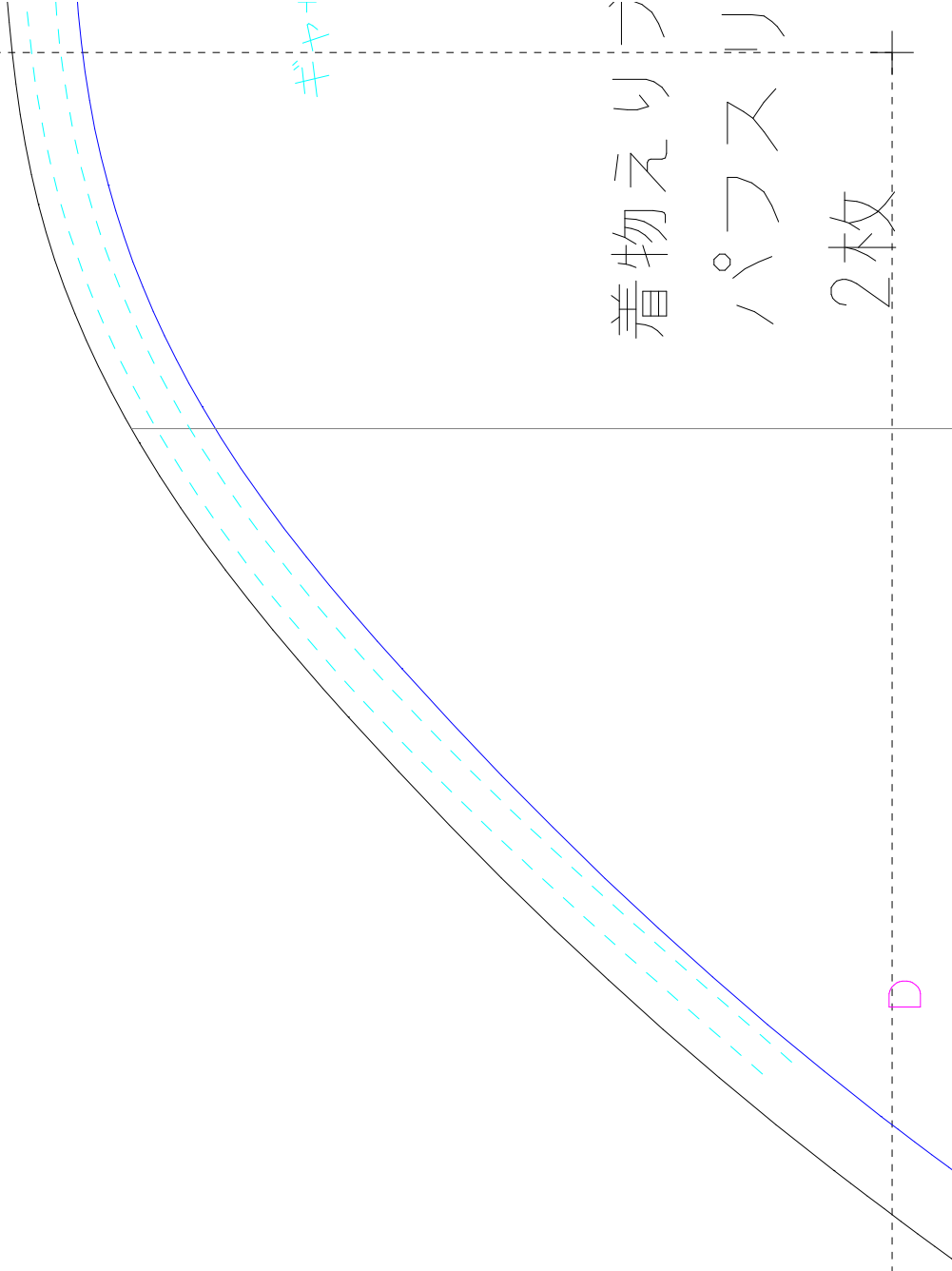


肩
#4

着物えり

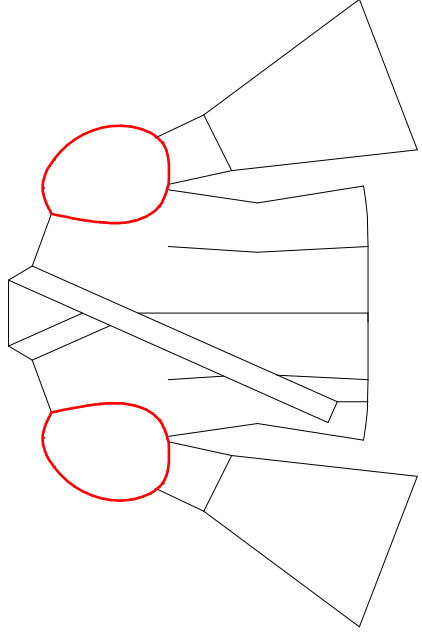
パフスリ

2枚



puff
× 2

このパーツ

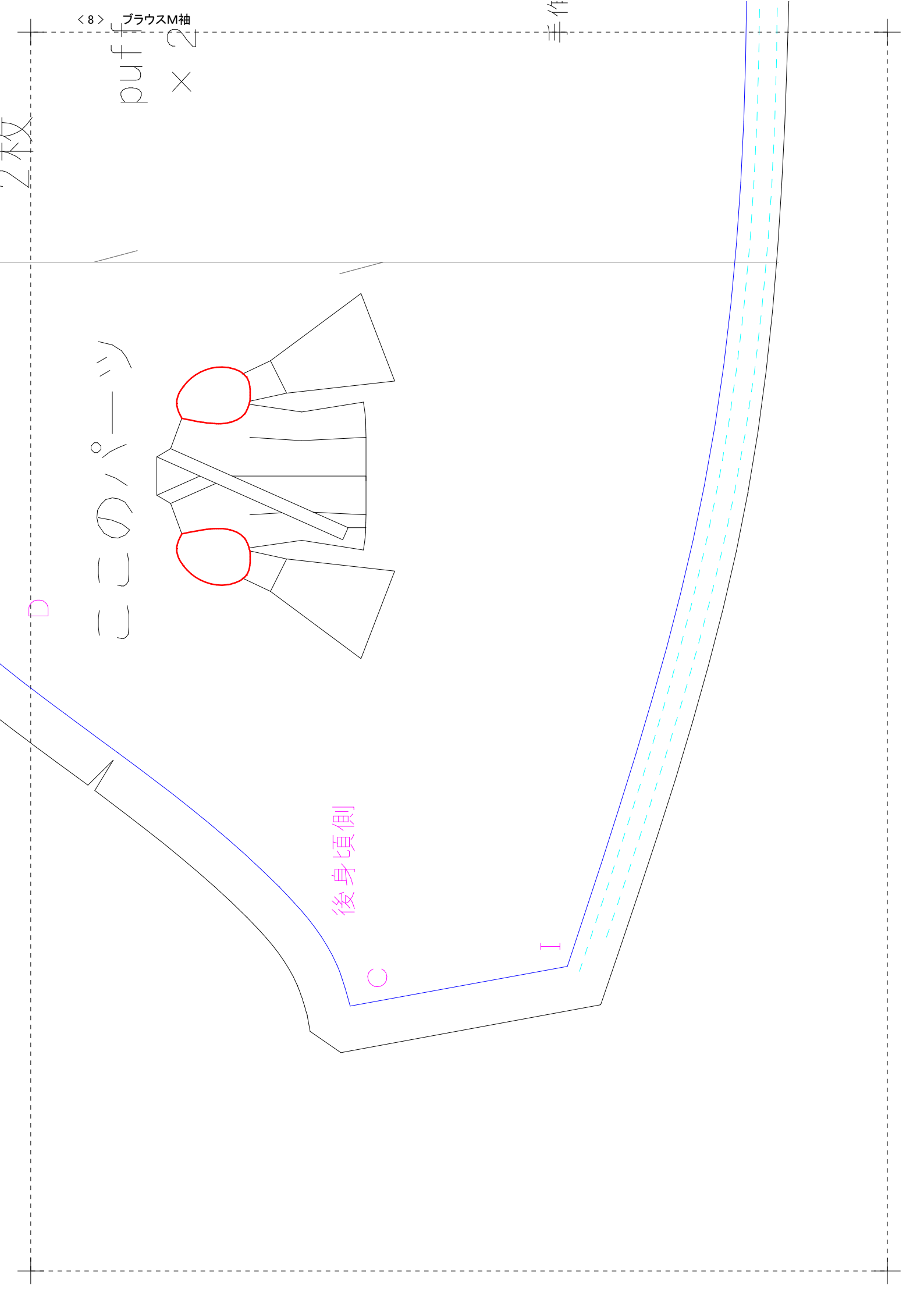


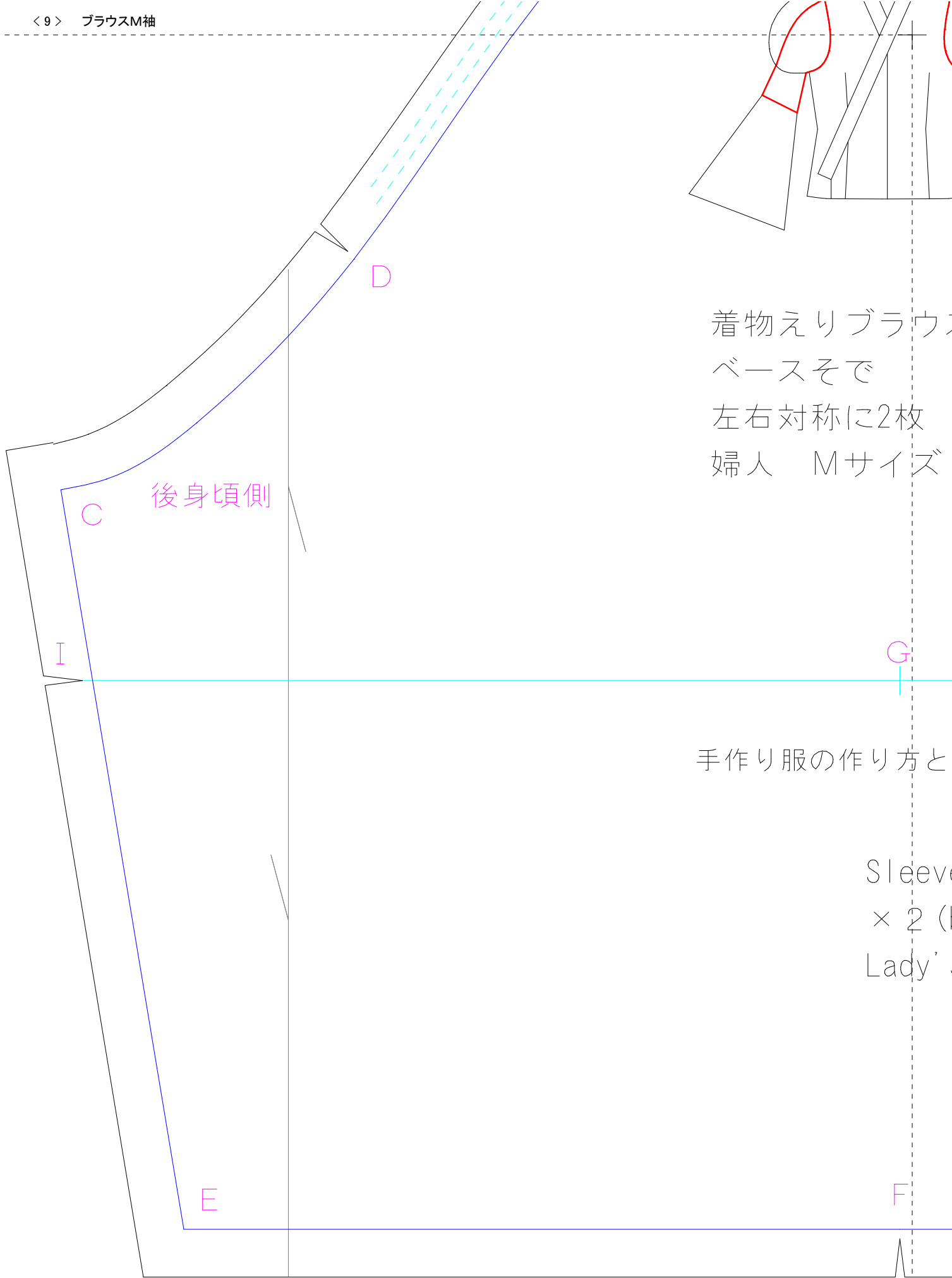
後身頃側

C

I

D



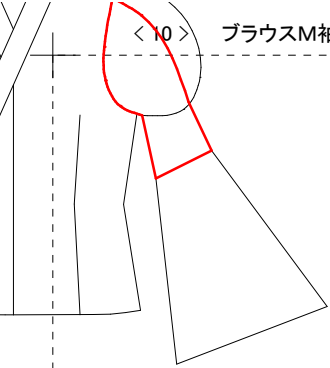


後身頃側

着物えりブラウス
ベースそで
左右対称に2枚
婦人 Mサイズ

手作り服の作り方と

Sleeve
× 2 (H
Lady'



ブラウス

2枚
サイズ

前身頃側

B

I

↓縫い代の端はここにあわせる

作り方と型紙 USAKOの洋裁工房 (<http://yousai.net/>)

sleeve

× 2 (bilateral symmetry)

women's M

F

E