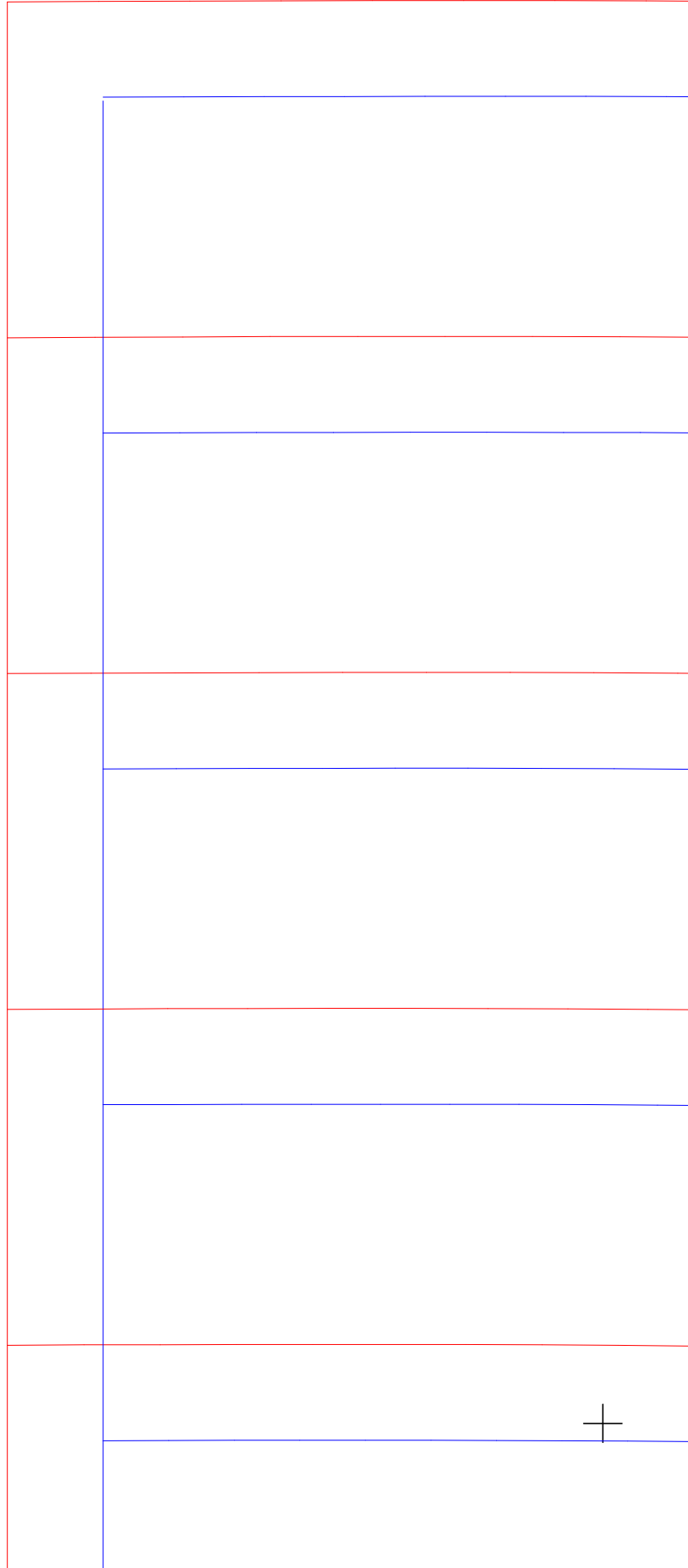


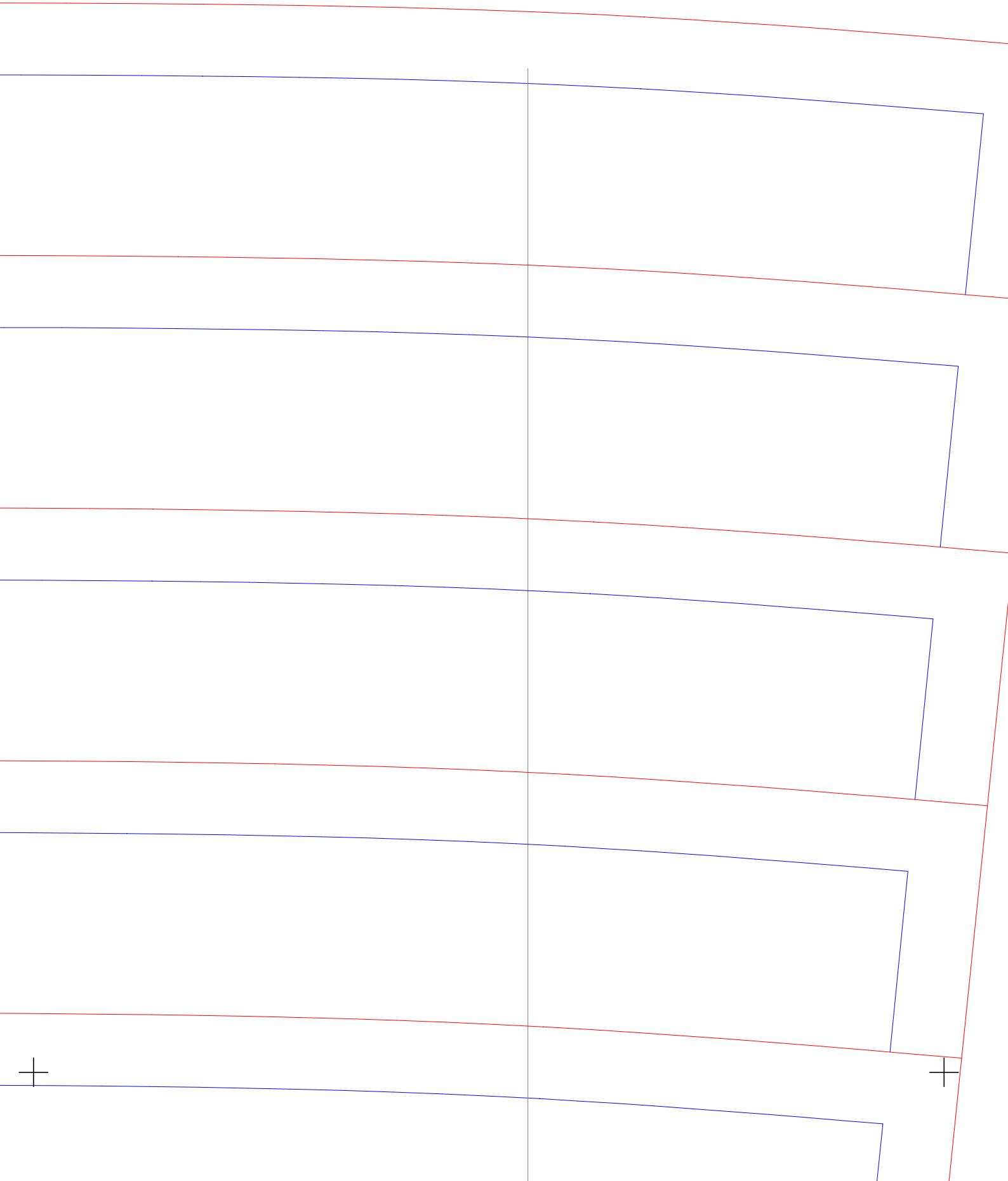


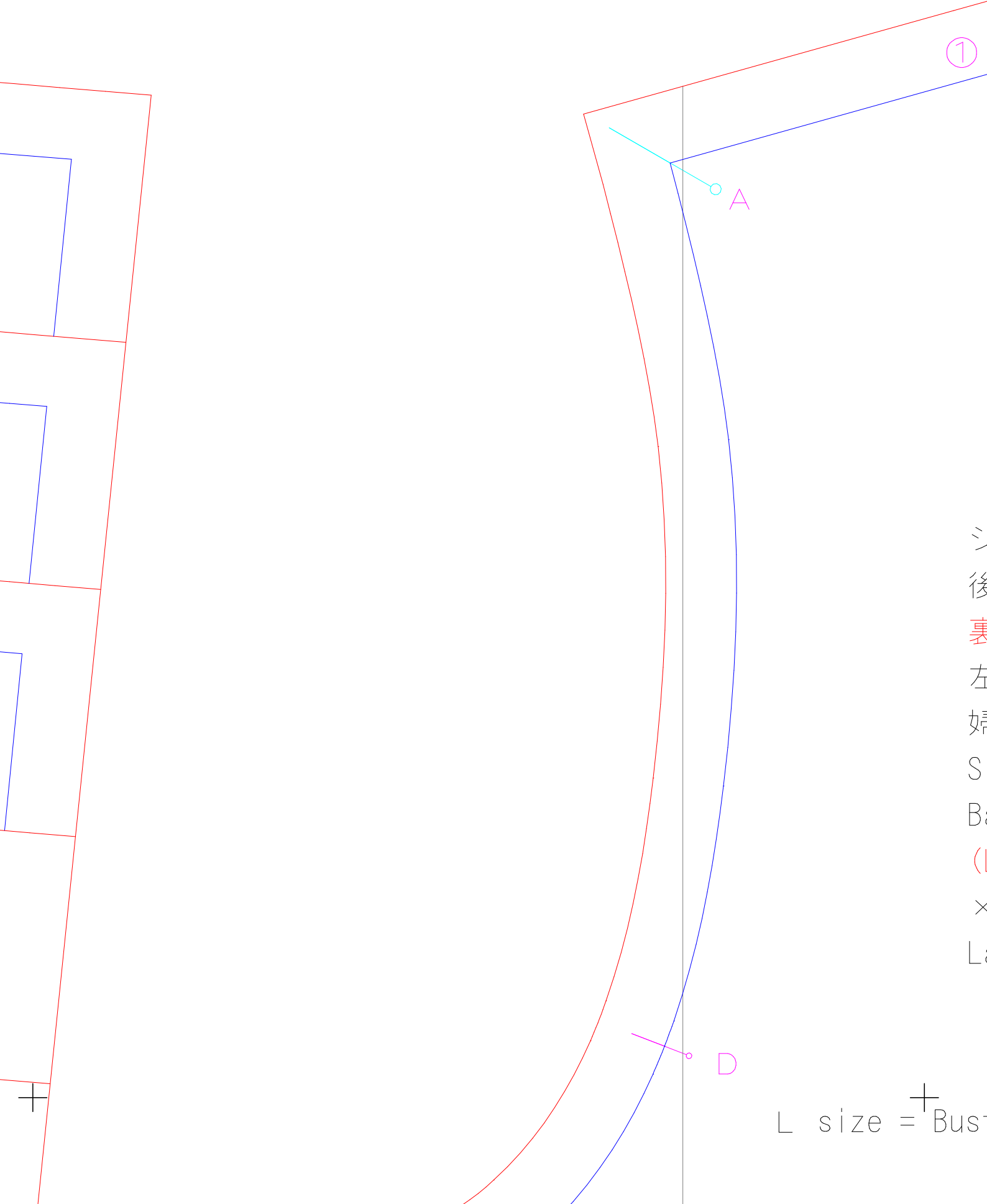
この図のように貼り合せてください
先に貼り合わせてから切ってください

1	2	3	4
5	6	7	8
9	10	11	12
13	14	15	16
17	18	19	20

21	22	23
25	26	27
29	30	31



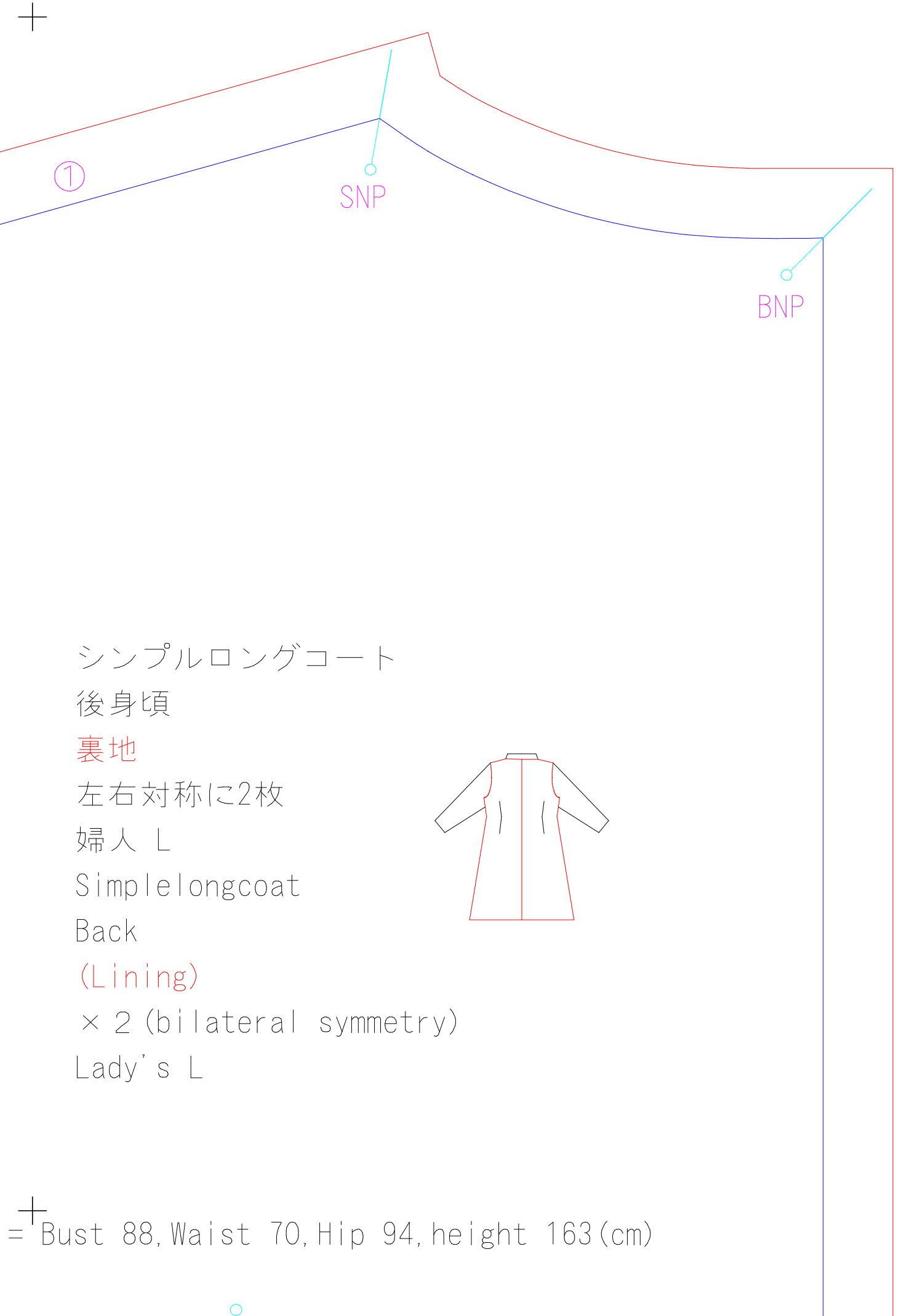




シ
後
裏
左
脇
S
B
(
×
L



L size = Bust



シンプルロングコート

後身頃

裏地

左右対称に2枚

婦人 L

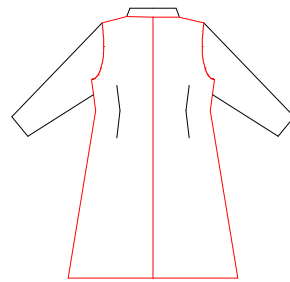
Simple longcoat

Back

(Lining)

× 2 (bilateral symmetry)

Lady's L



+ Bust 88, Waist 70, Hip 94, height 163(cm)



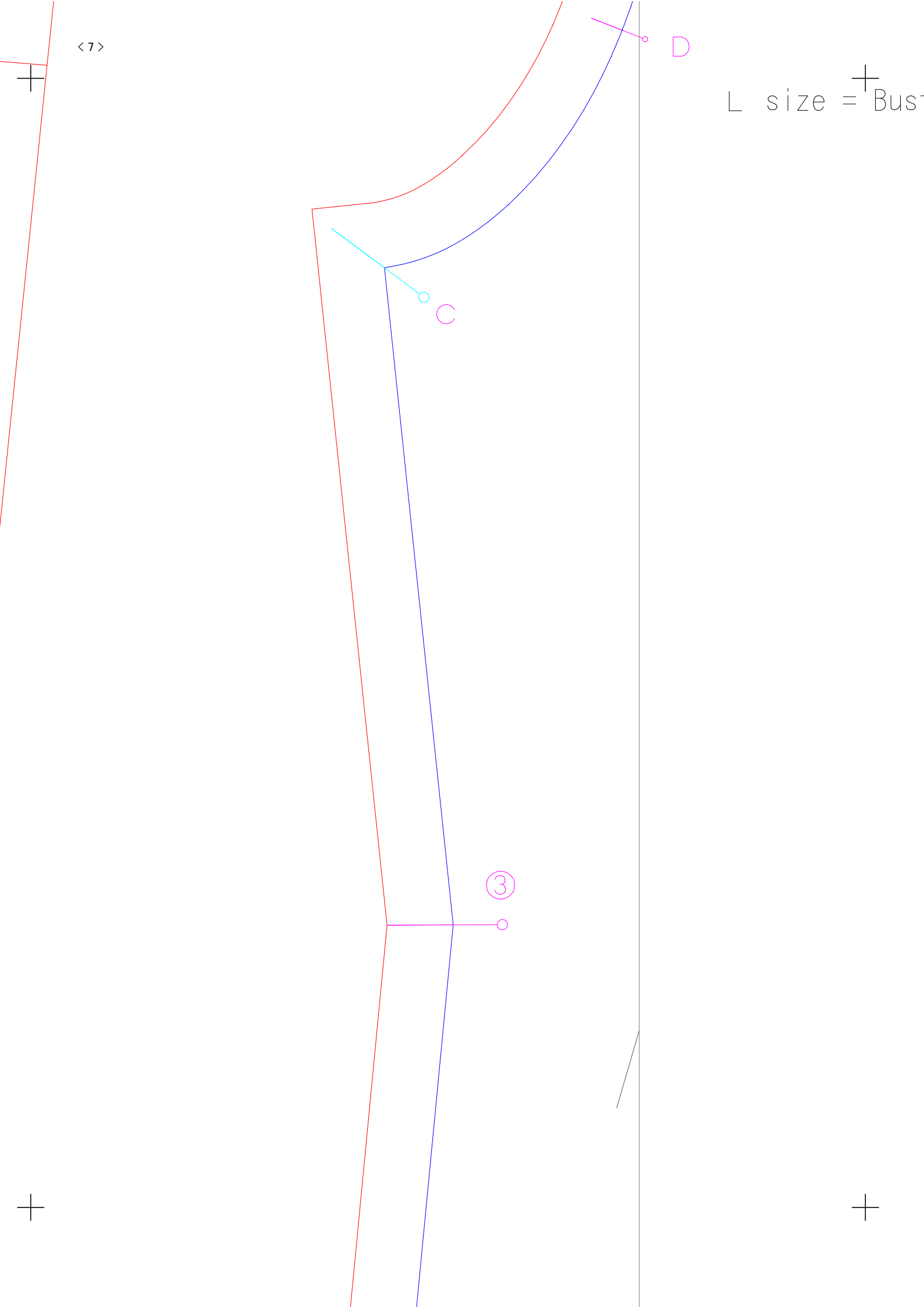
< 6 >



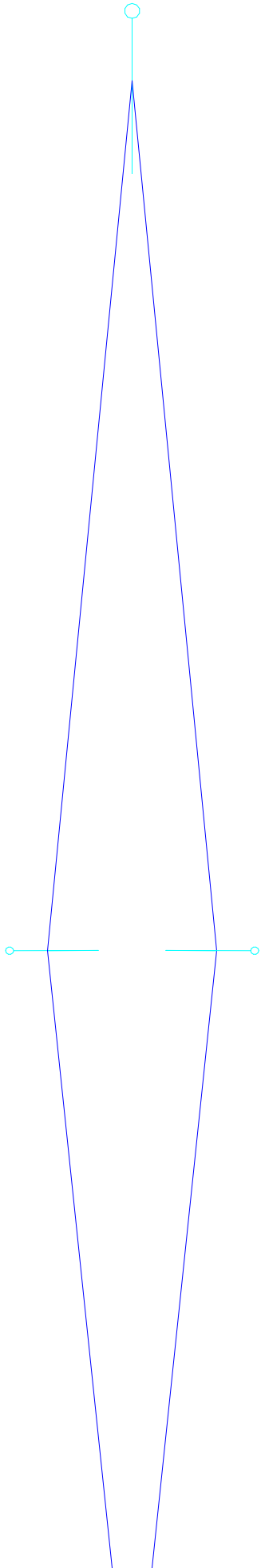
<7>

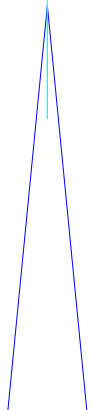
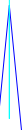


L size = Bust

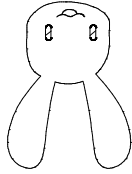


+ Bust 88, Waist 70, Hip 94, height 163(cm)

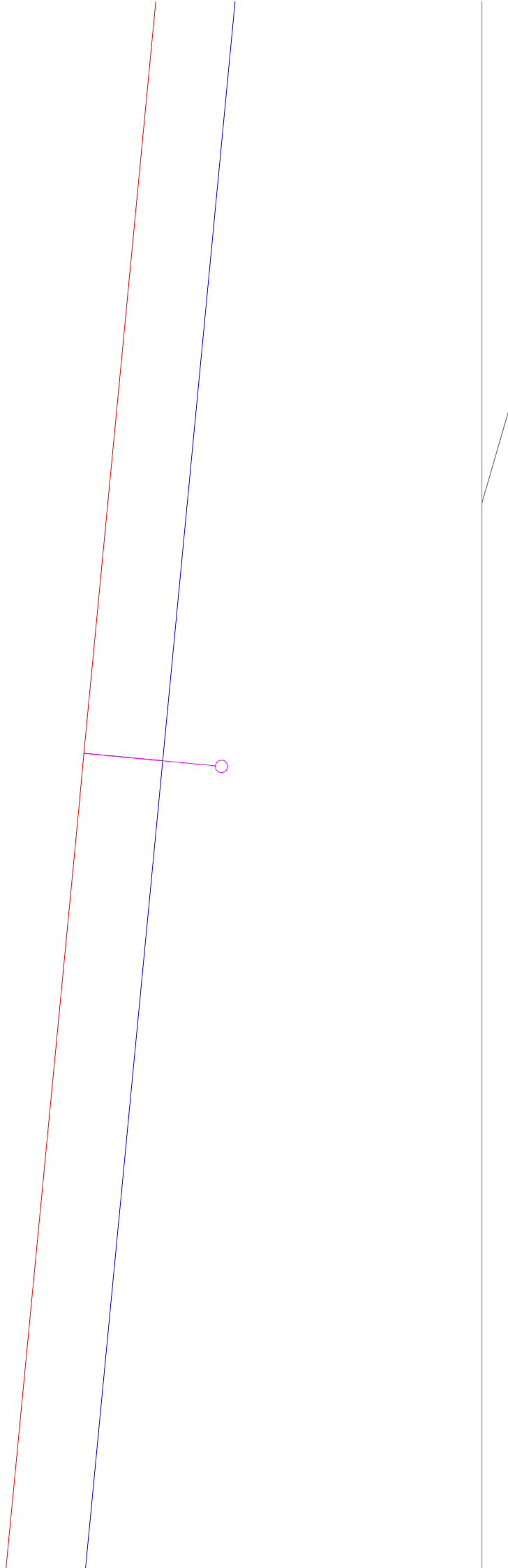




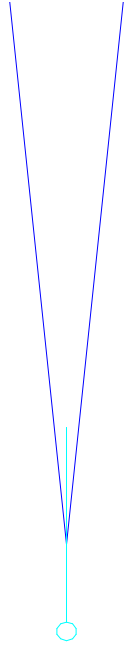
手作り服の作り方と型紙
USAKOの洋裁工房
<http://yousai.net/>



$\langle 11 \rangle$

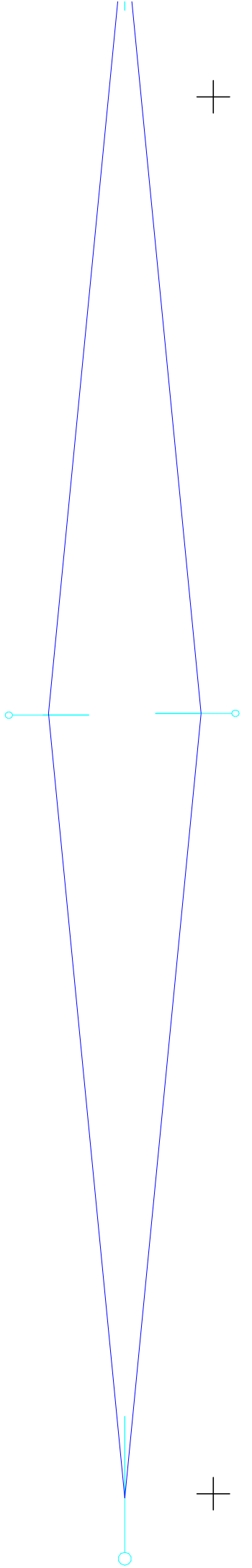
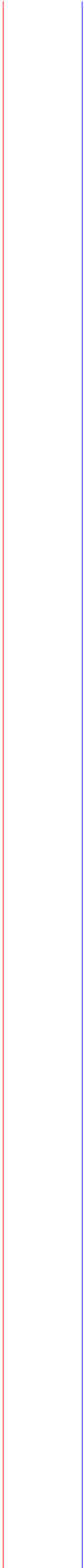


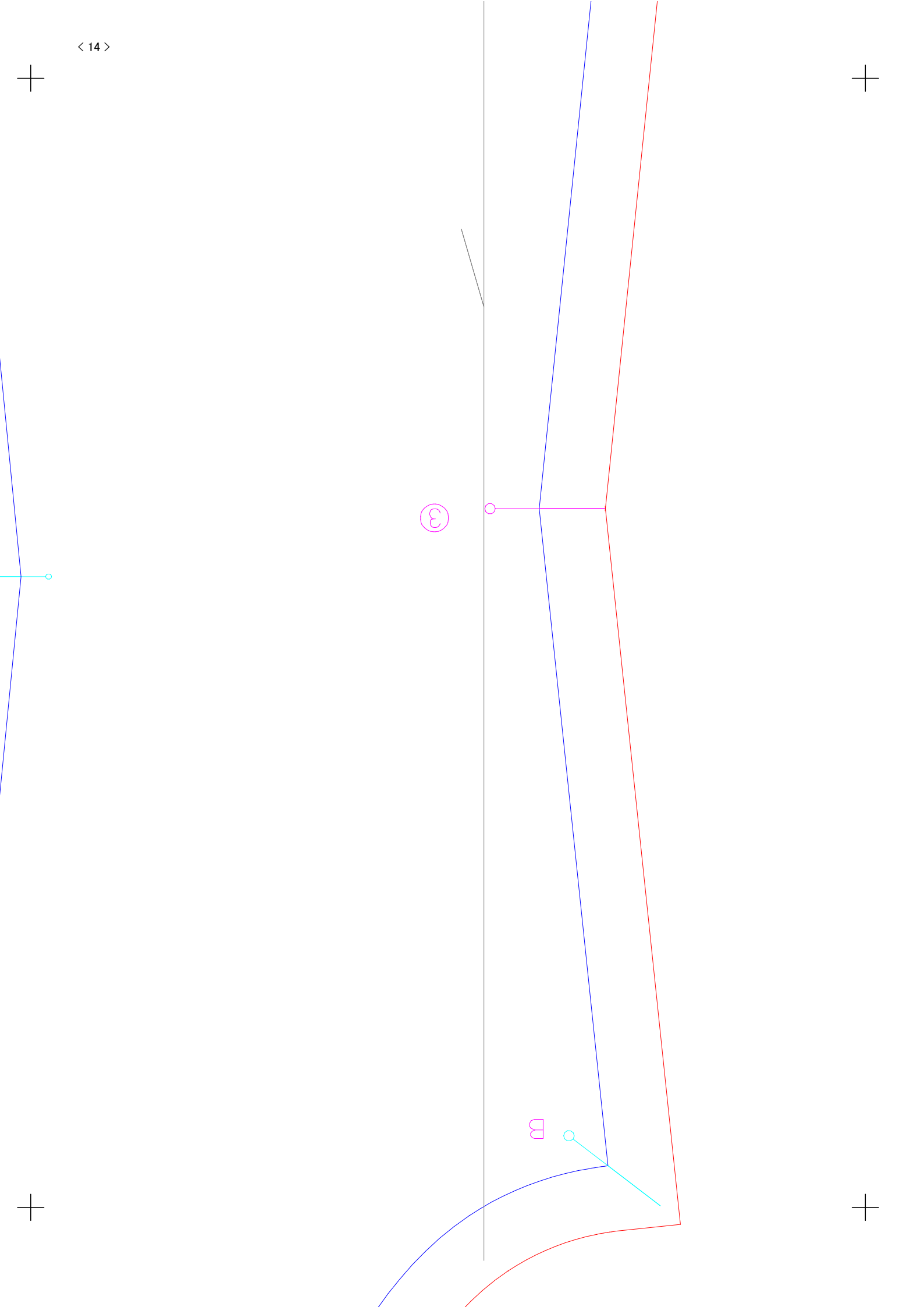
< 12 >

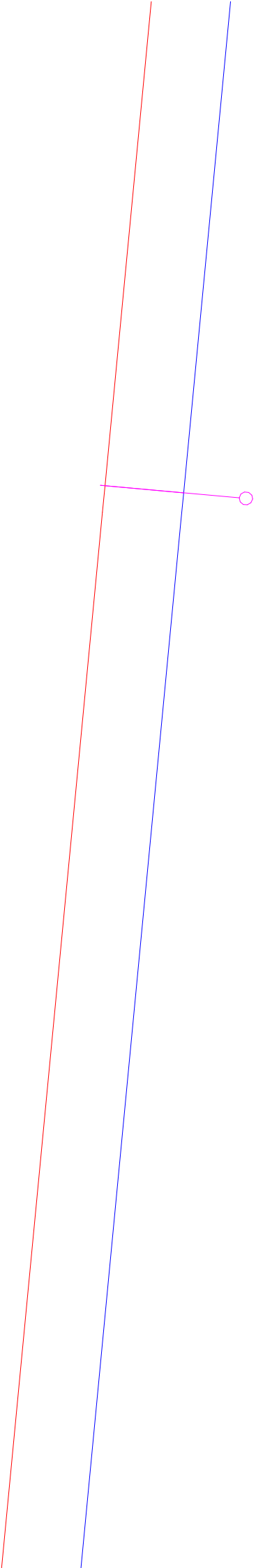


②

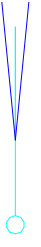










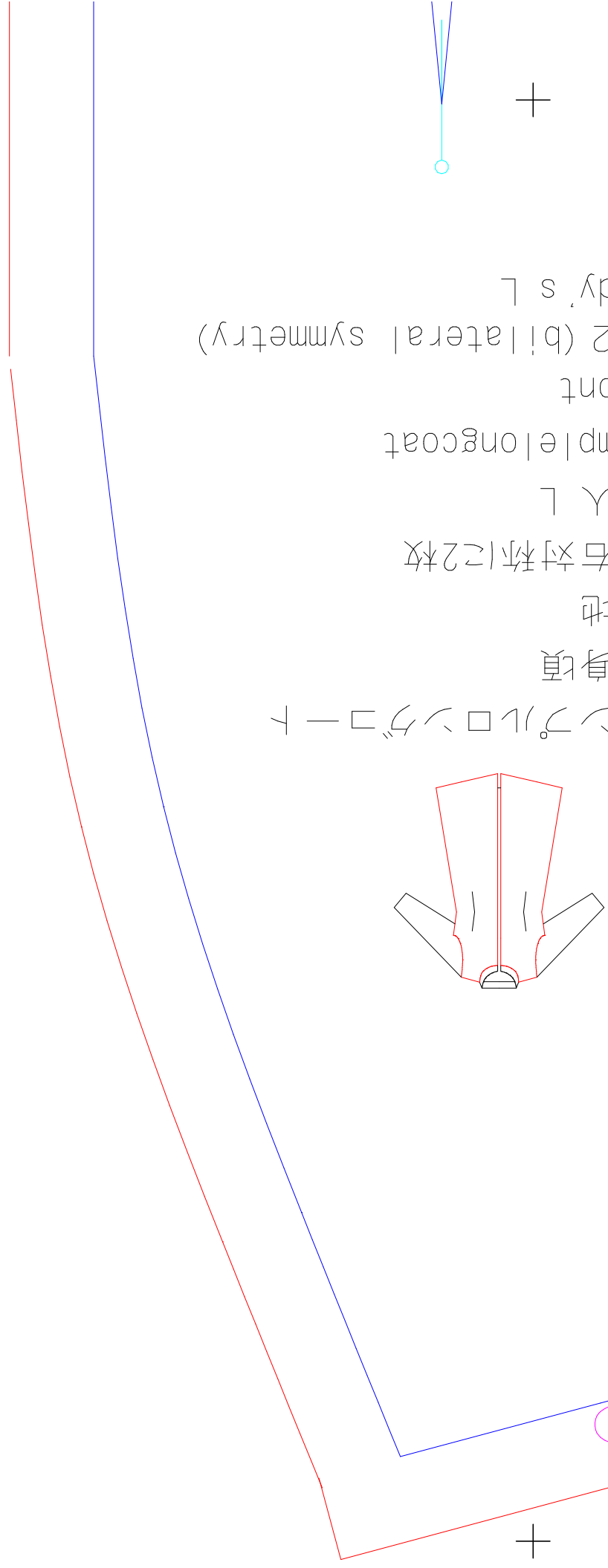
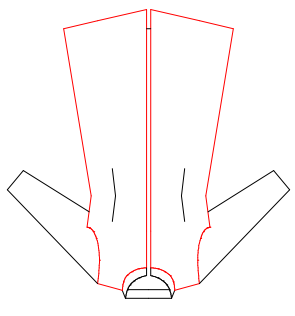


2 (bilateral symmetry)
front
complete long coat

右対称に2枚
入L

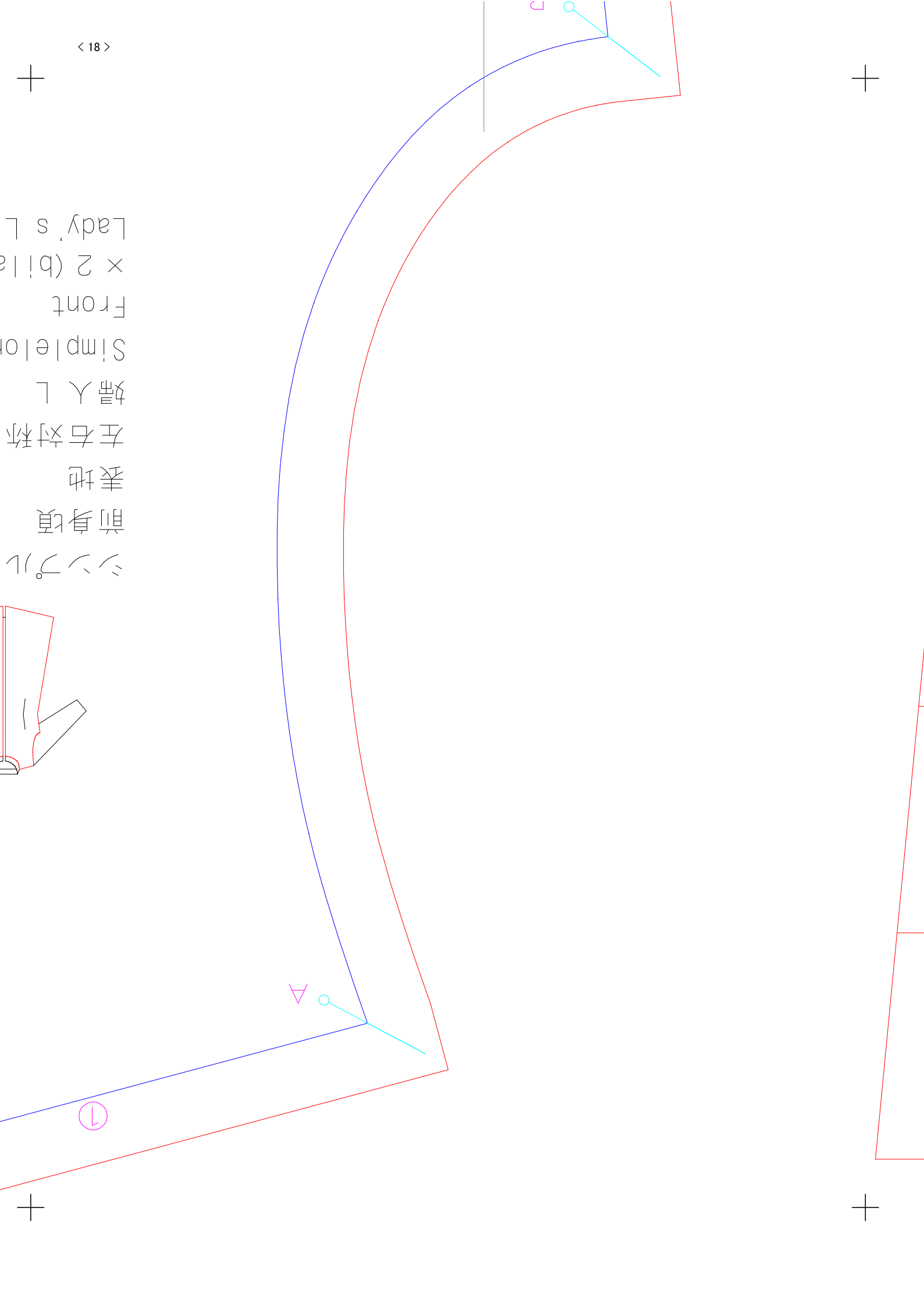
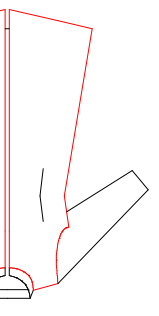
身頃
地

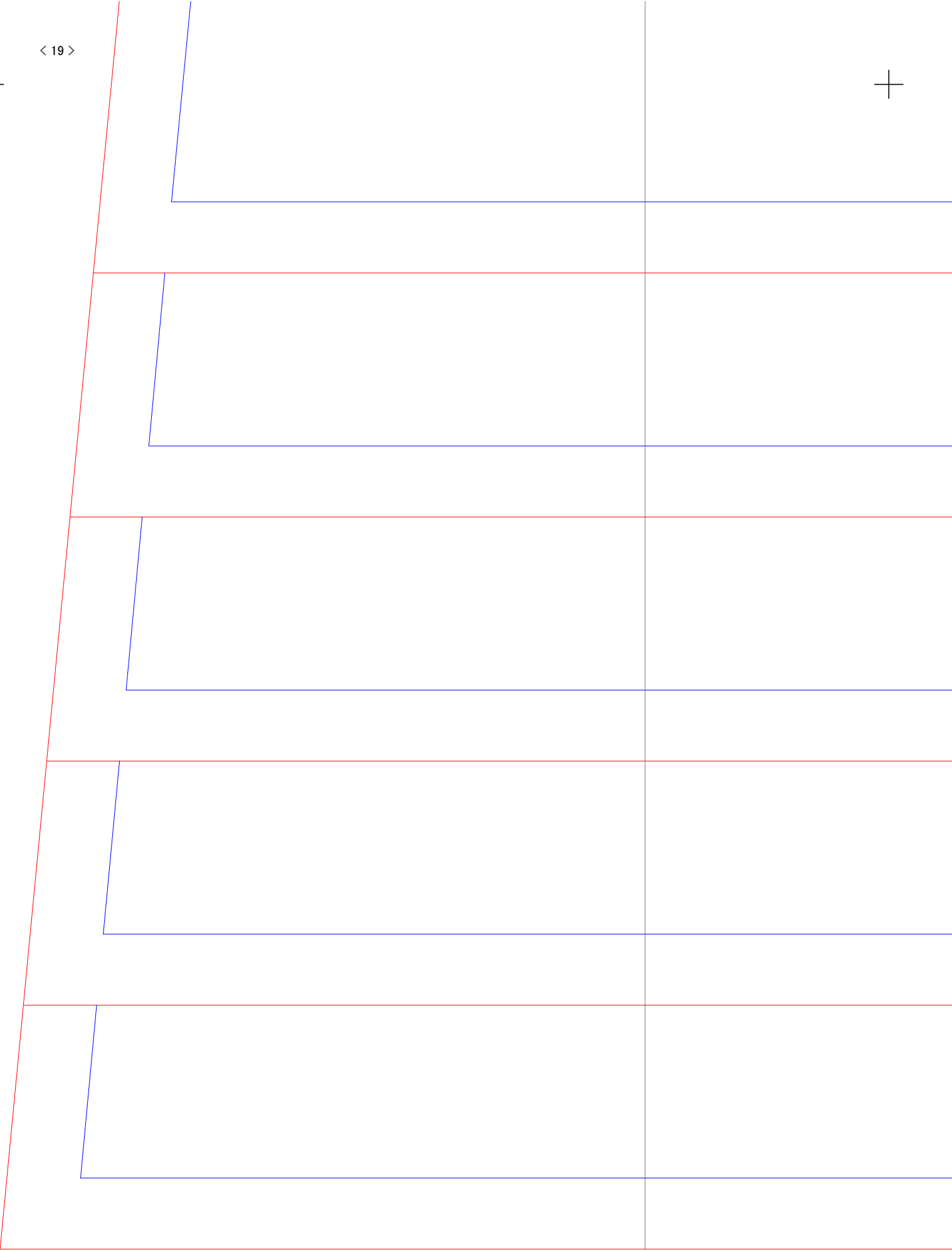
フックコート





前身頃
表地
左右対称
婦人 L
Simpleton
Front
× 2 (bill)
Lady's L







↓ 105 c m

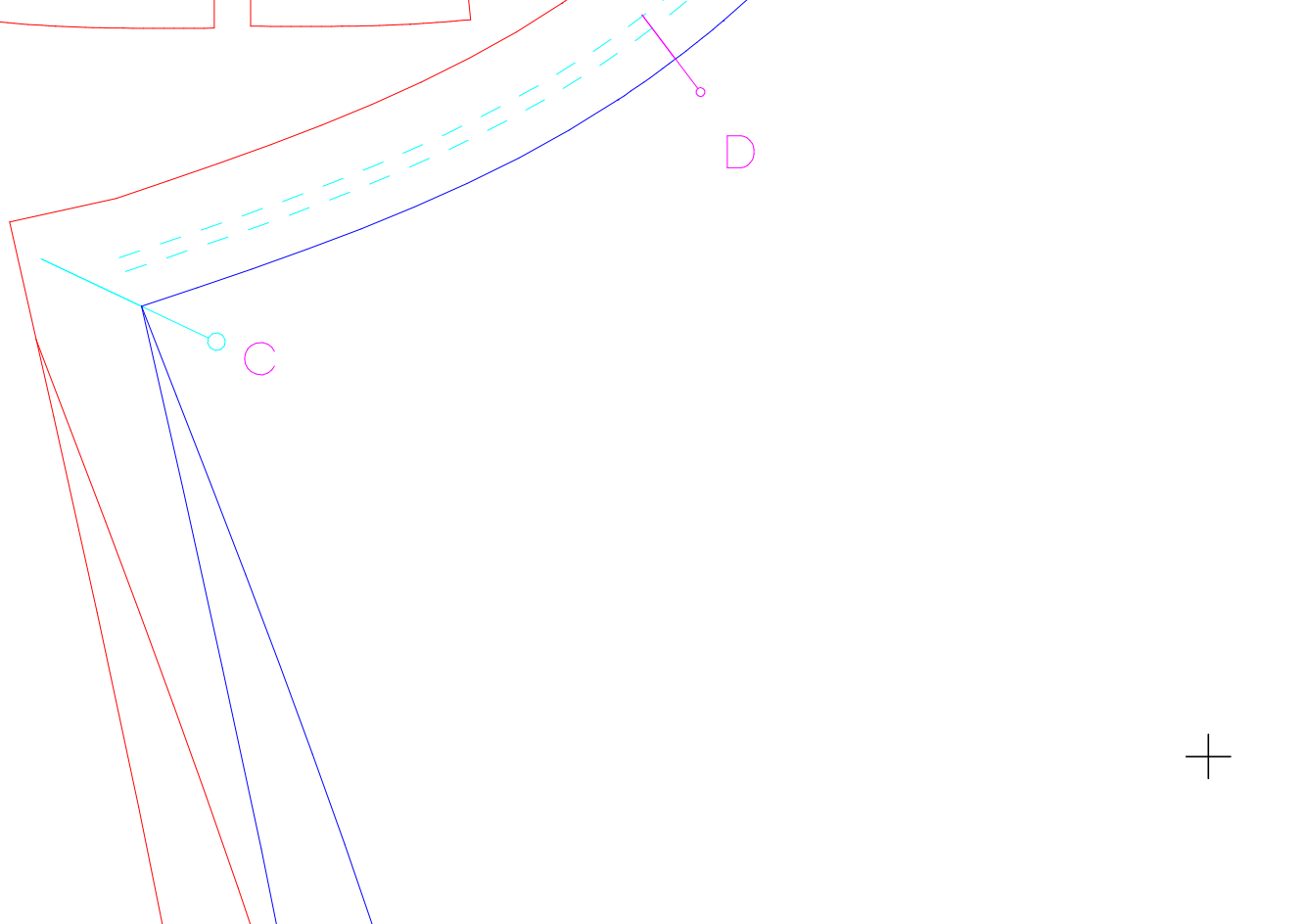
↓ 110cm

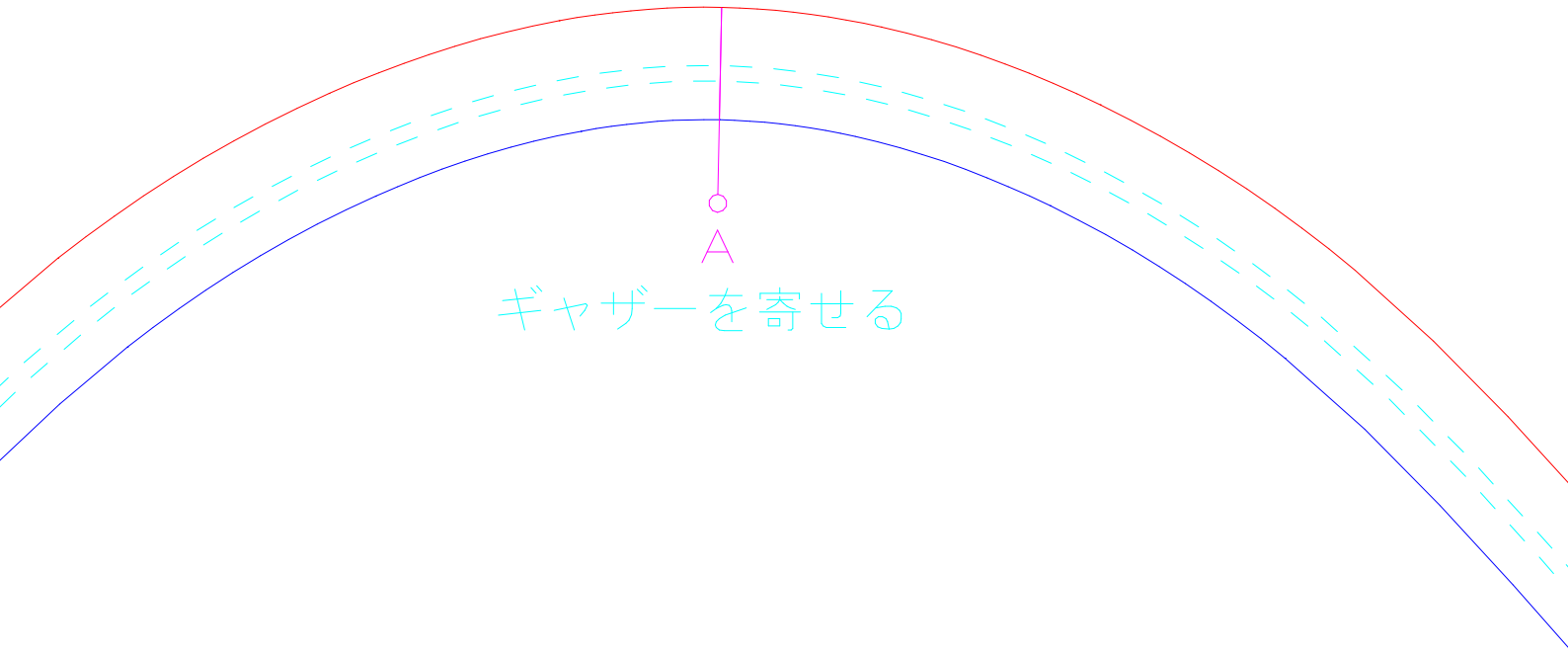
↓ 115cm

↓ 120cm

↓ 125cm







ギャザーを寄せる

シンプルロングコート

長そで

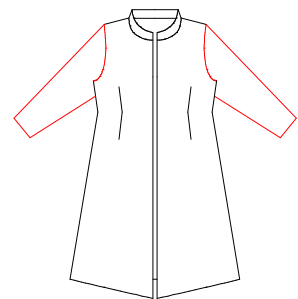
裏地

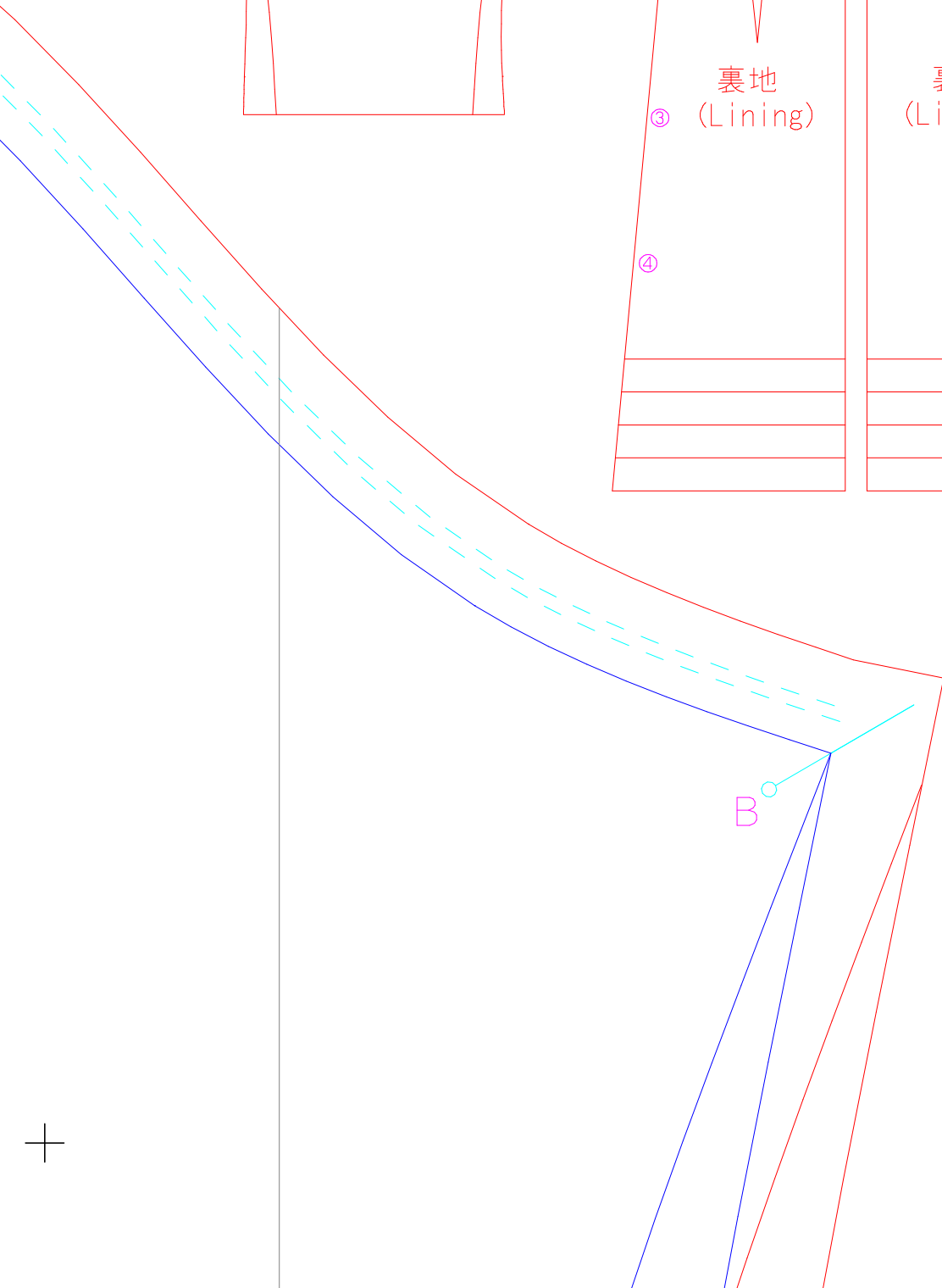
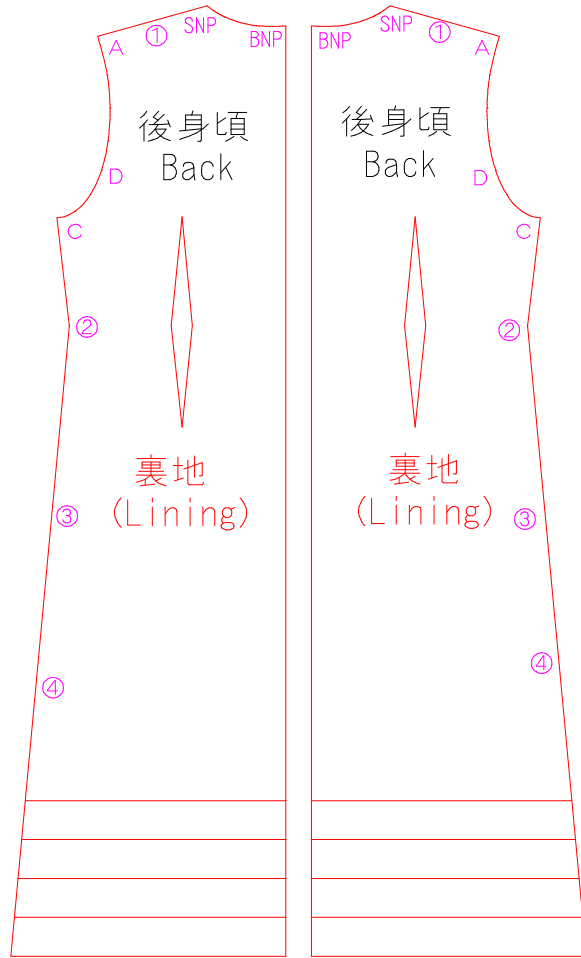
左右対称に2枚

婦人 L

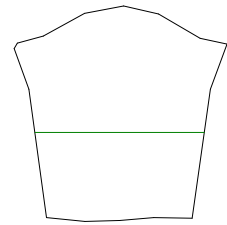
Simple longcoat

Long sleeve

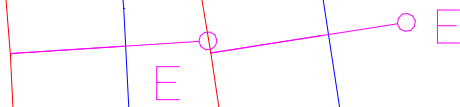




丈をかえるには



真ん中あたりで分割します



左右対称に2枚

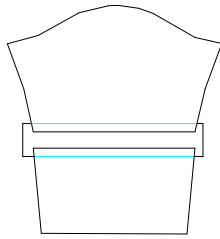
婦人 L

Simple longcoat

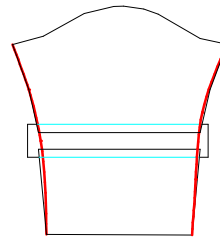
Long sleeve

× 2 (bilateral symmetry)

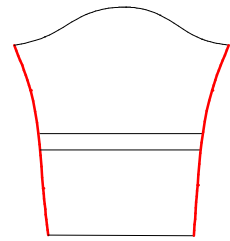
Lady's L



伸ばしたい分広げて、
裏から紙を足します



滑らかになるように
線をつなぎ直します



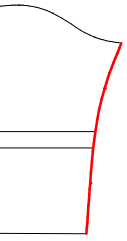
余分を切り落とす

丈を増減したい時は↓この線で

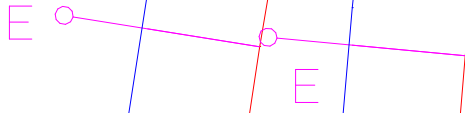
切って間に伸ばしたい分紙を足したり

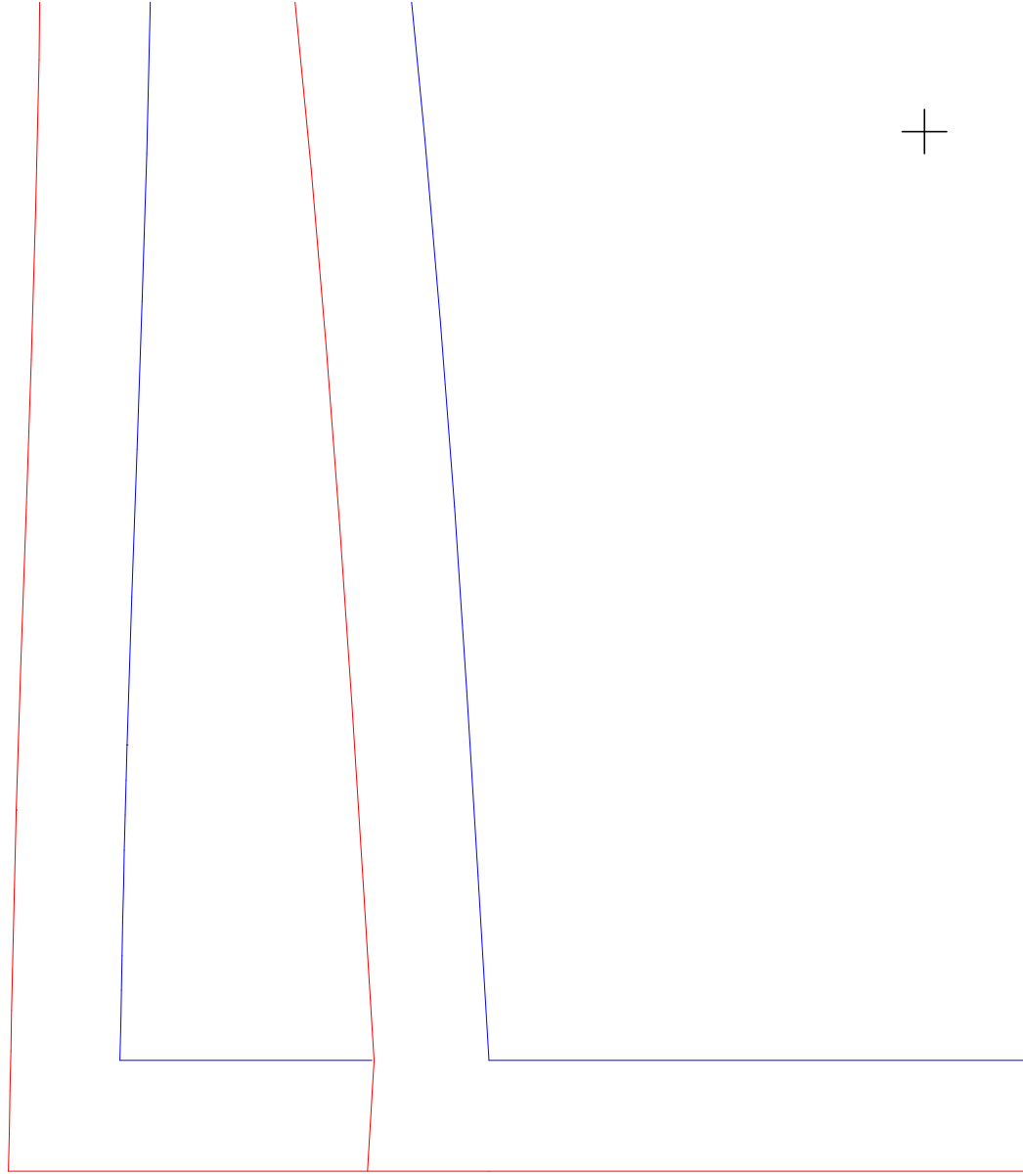
折りたたんで短くしたりと調節してください

この方法を覚えていると他の型紙でも簡単に応用がききますよ



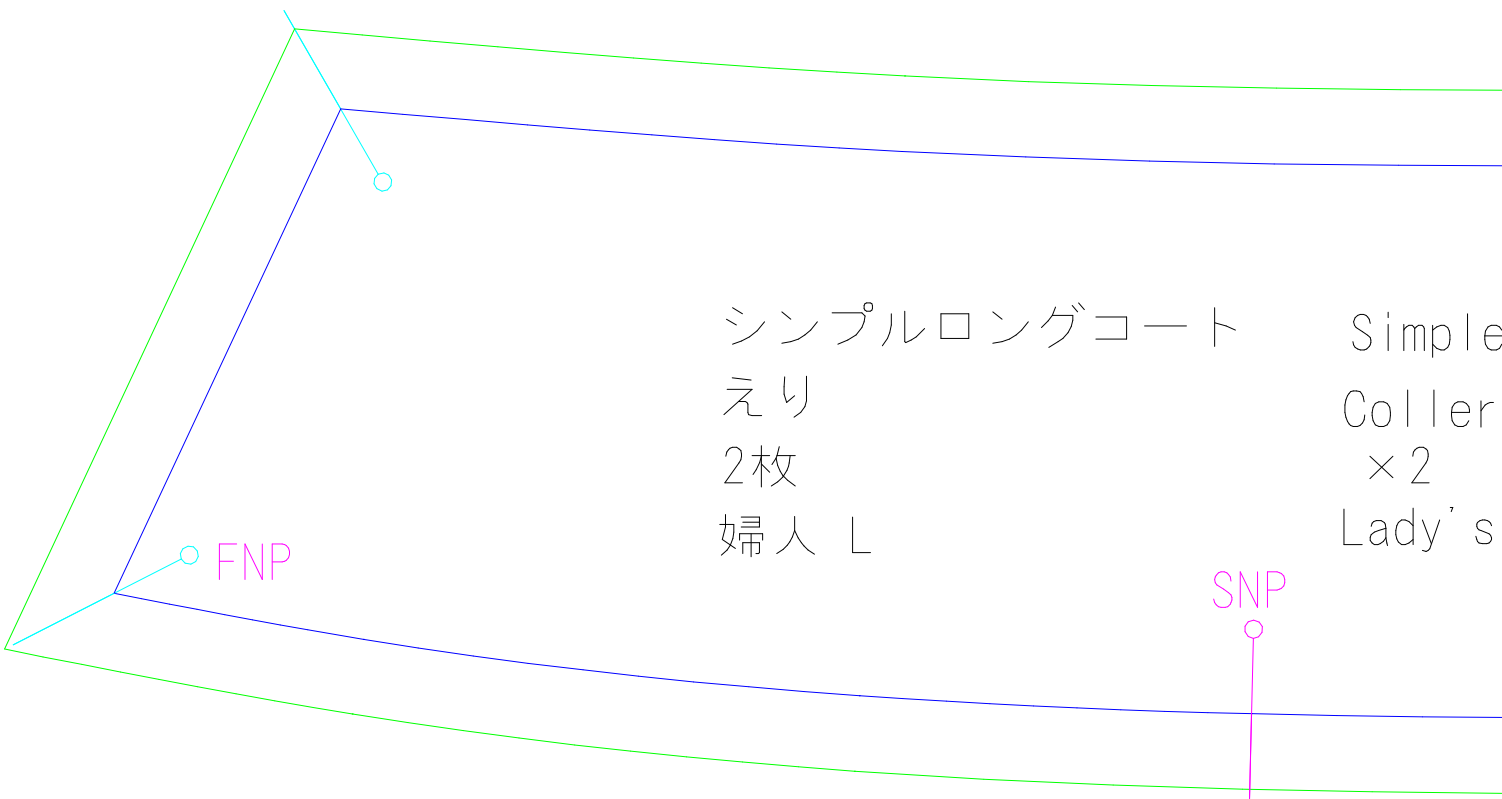
を切り落とす





シンプルロングコート
えり
2枚
婦人 L

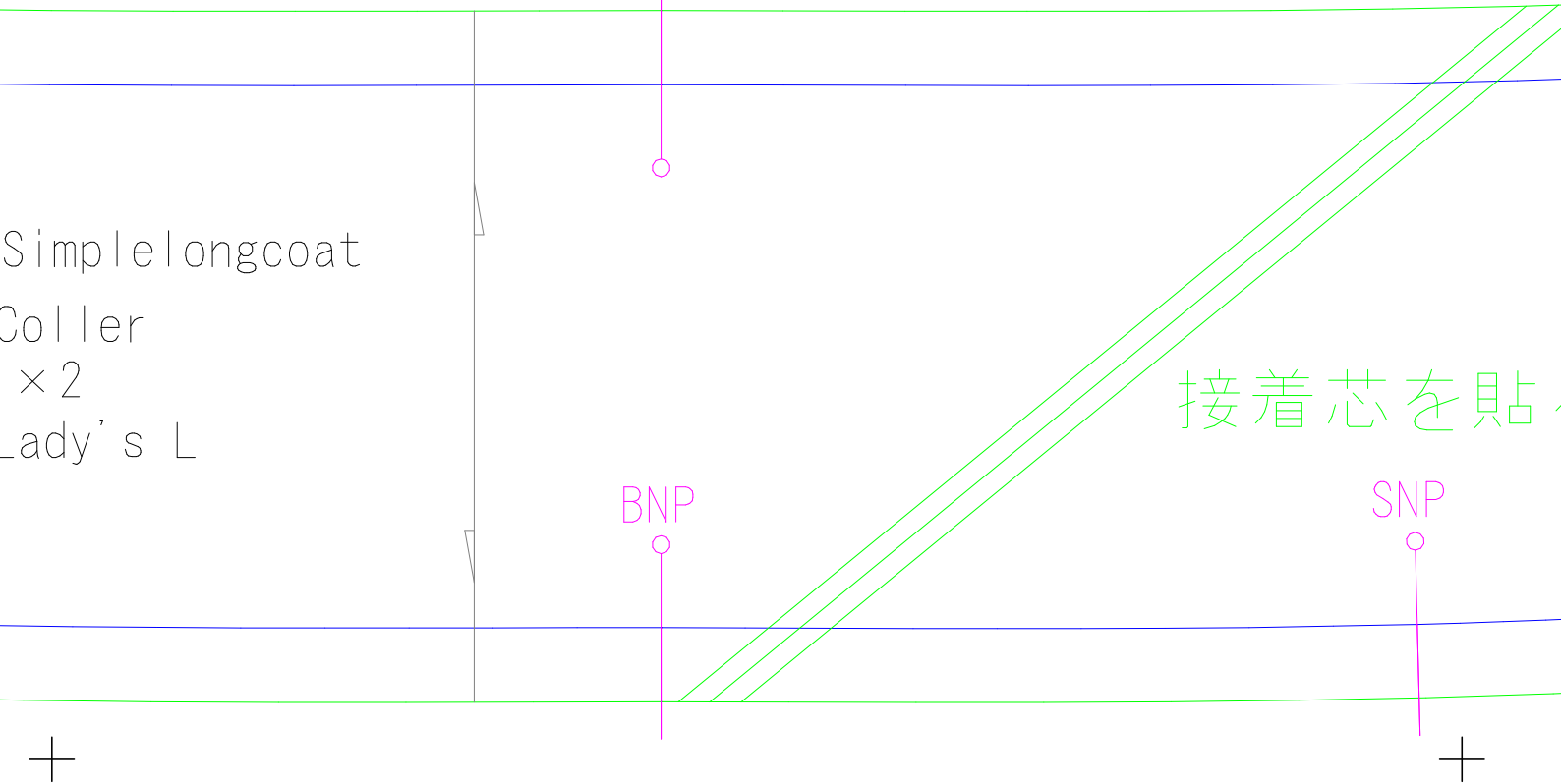
Simple
Coller
×2
Lady's

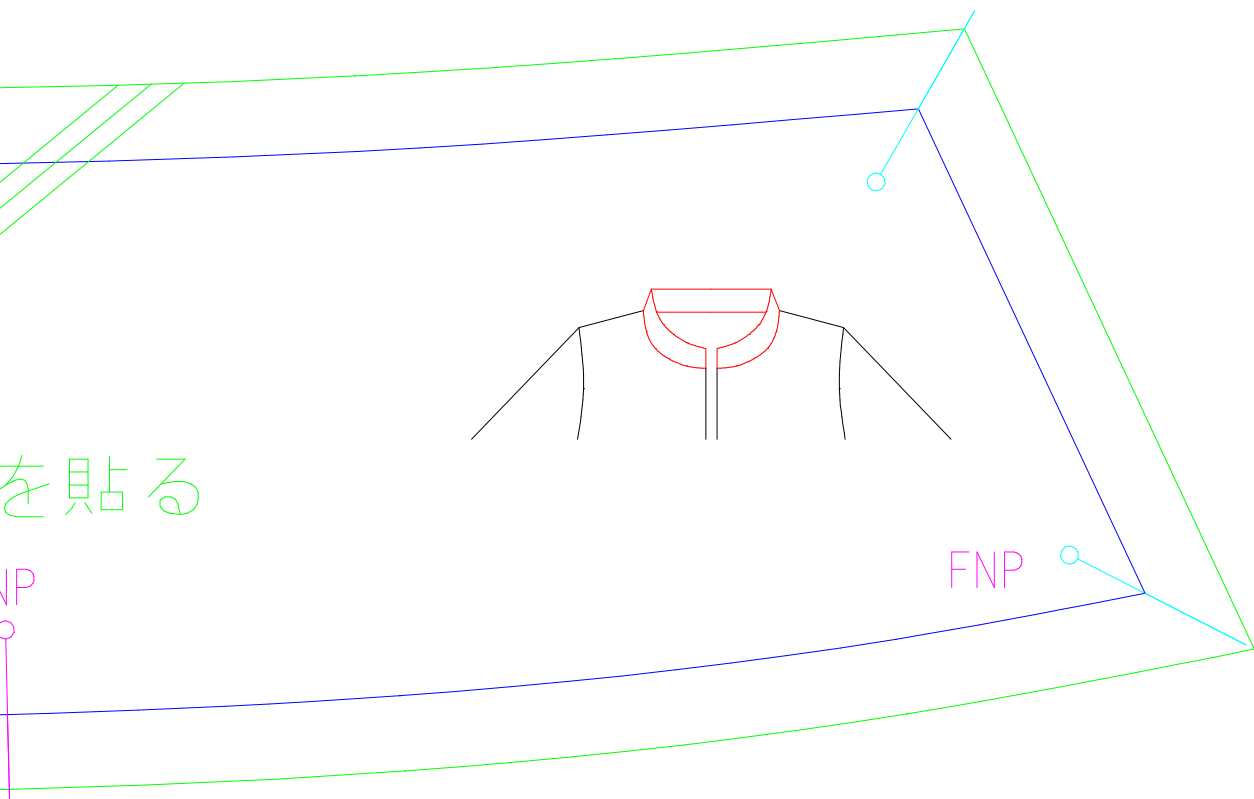
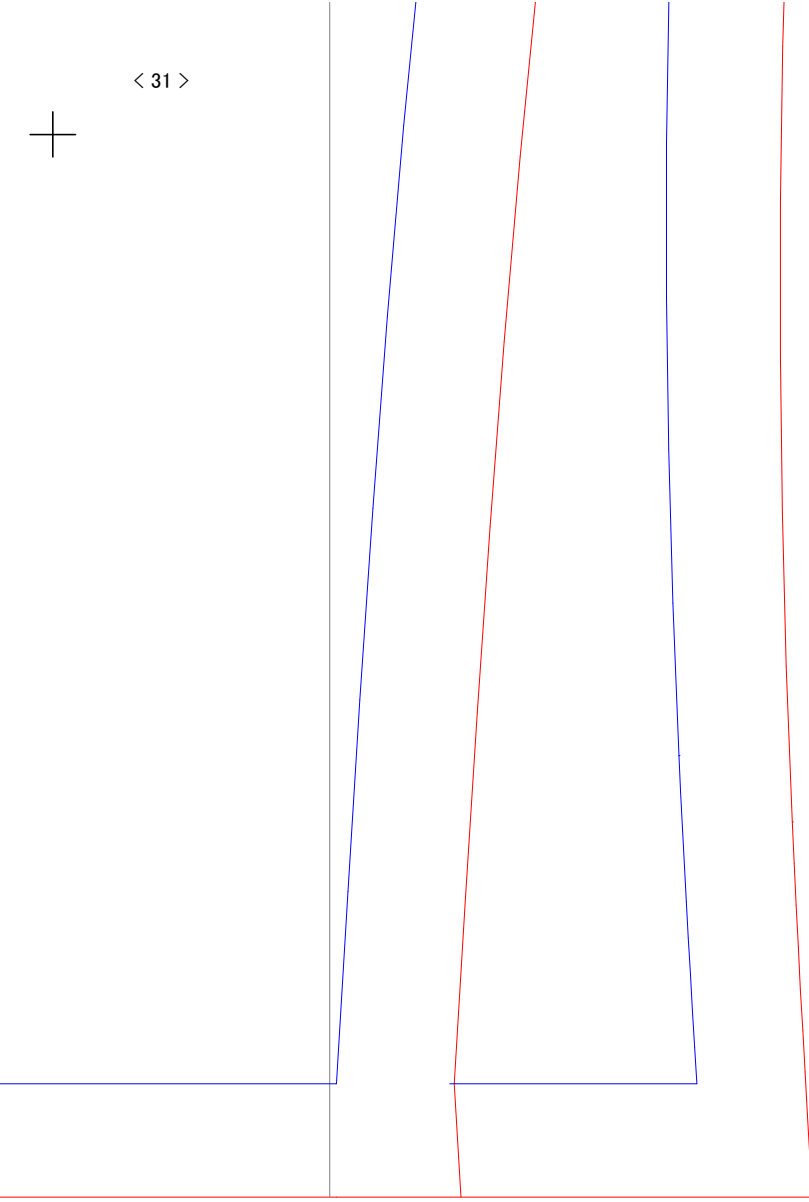


FNP

SNP







を貼る

NP

FNP