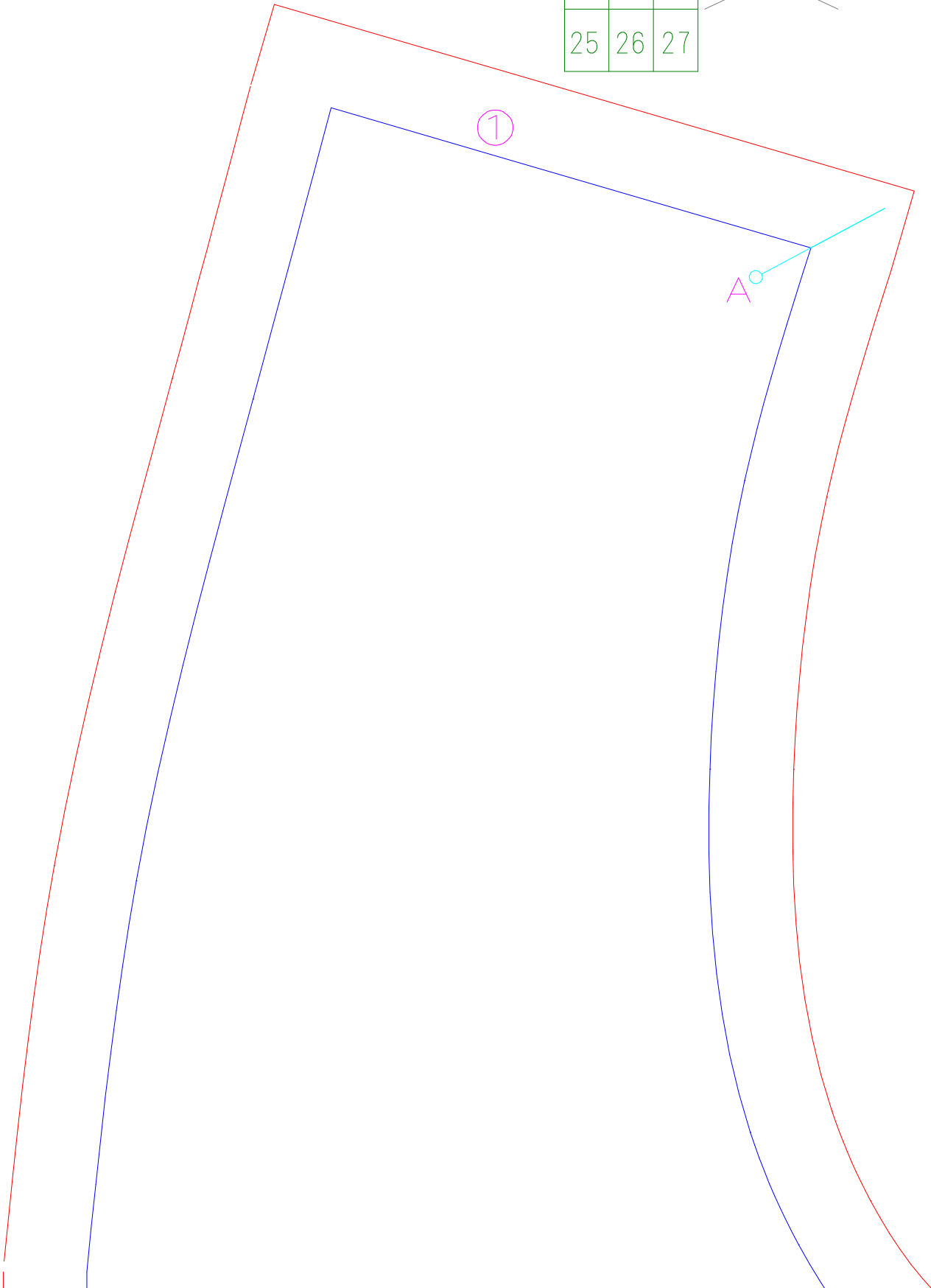
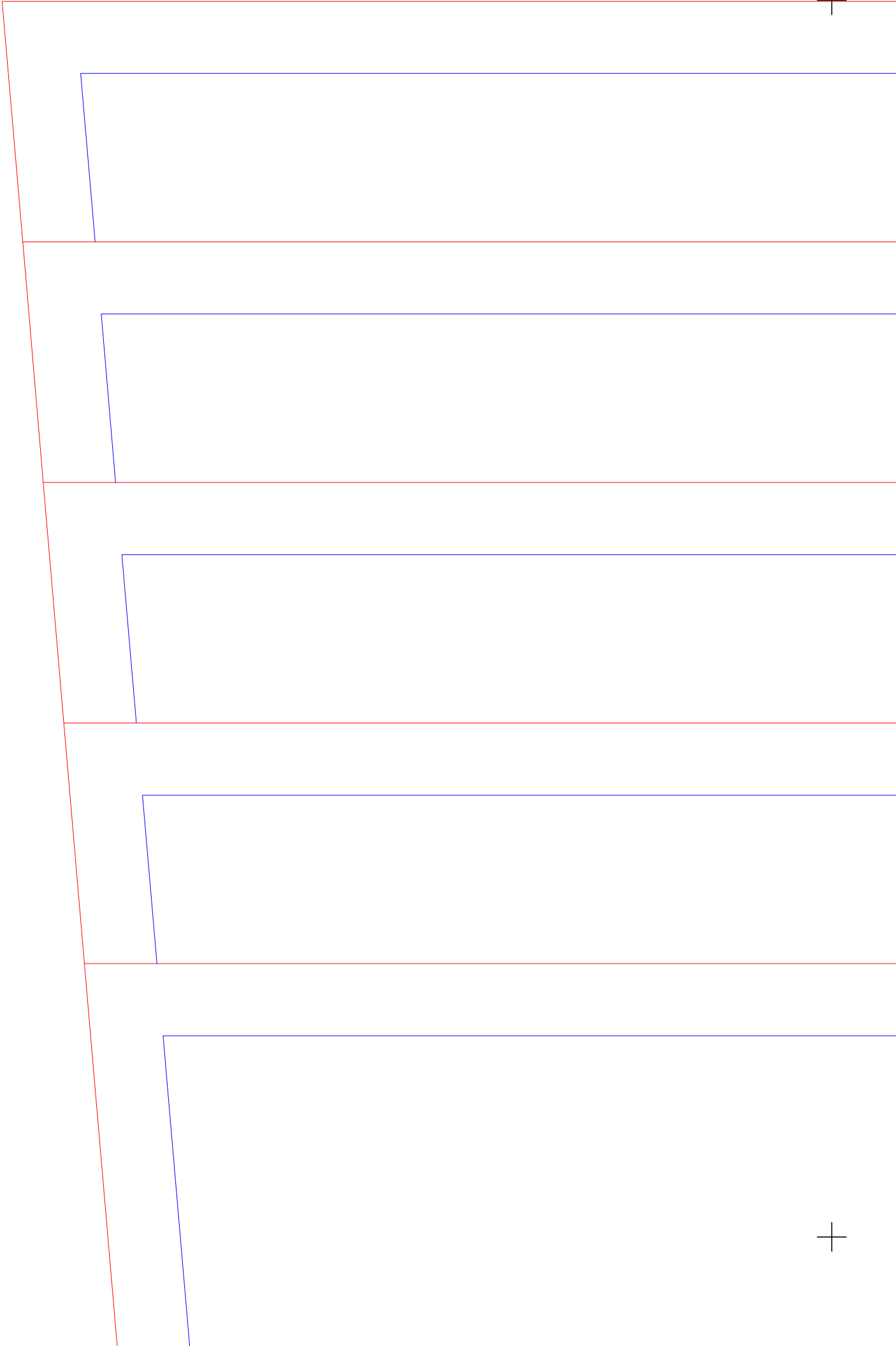




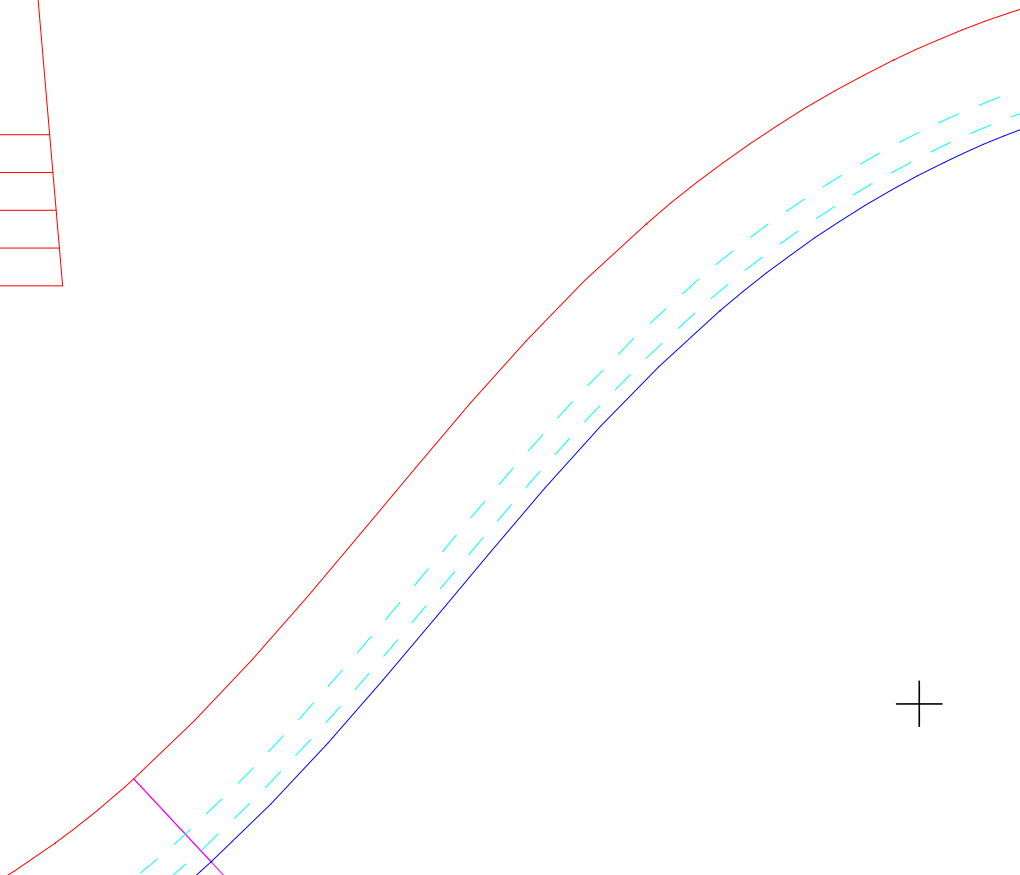
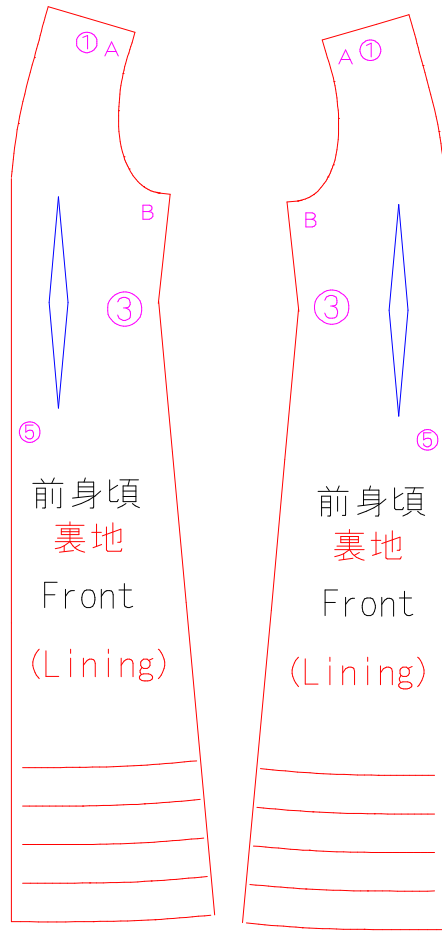
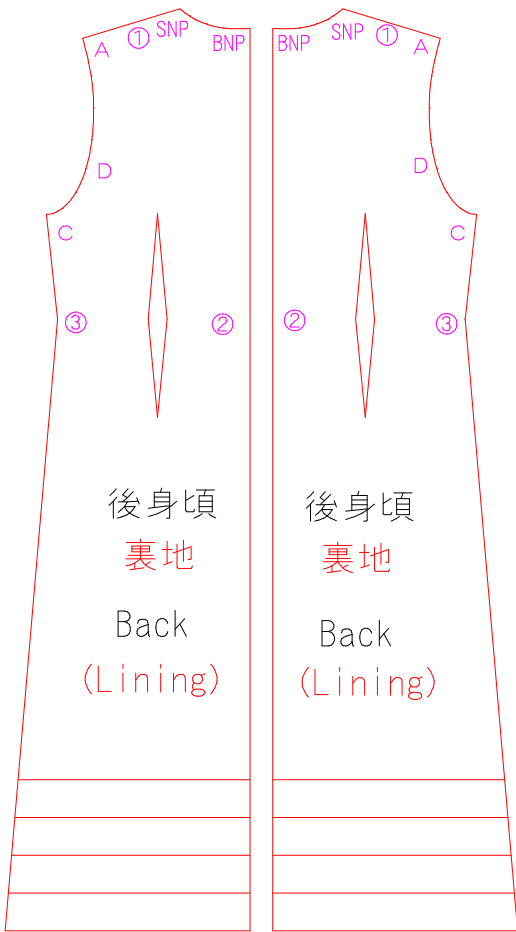
1	2	3	4	5	<del>6</del>
7	8	9	10	11	12
13	14	15	16	17	18
19	20	21	<del>22</del>	<del>23</del>	<del>24</del>
25	26	27			

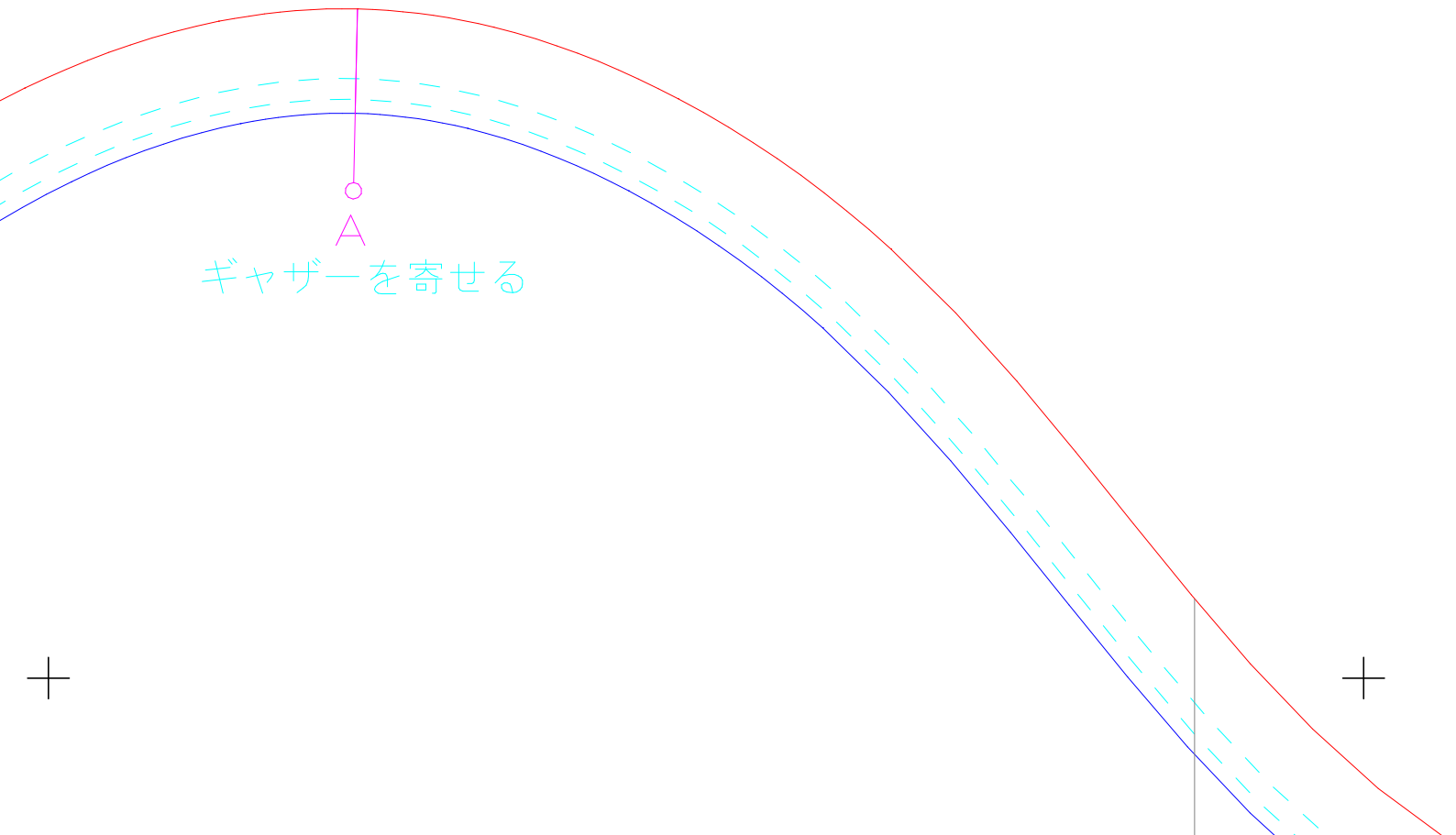
この図のように貼り合せてください  
先に貼り合わせてから切ってください











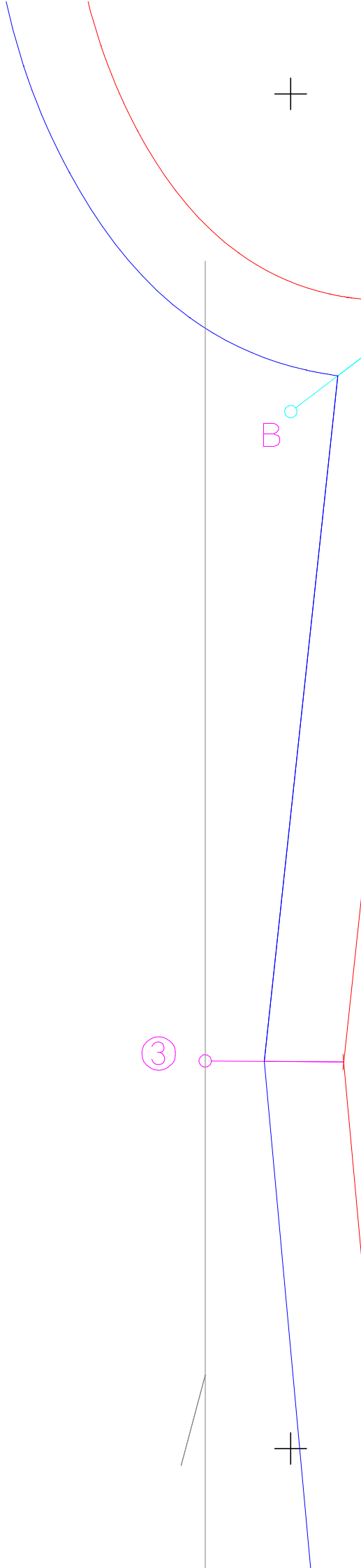
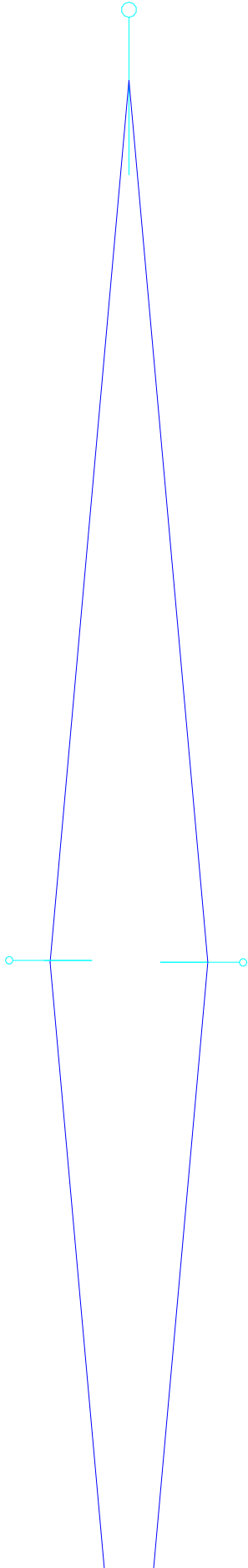
+

<7>

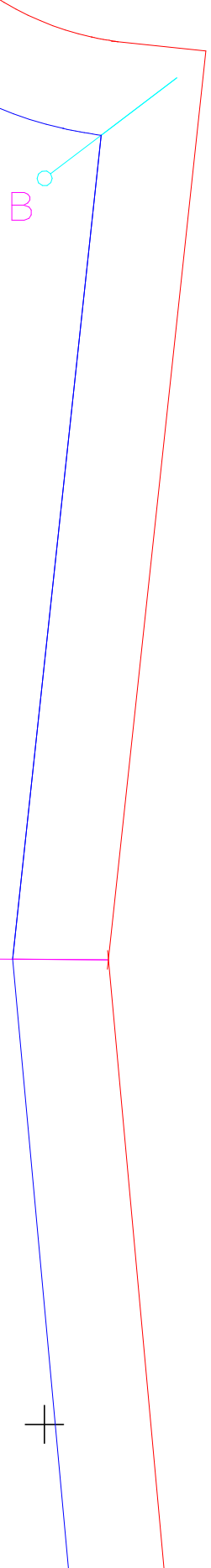
+

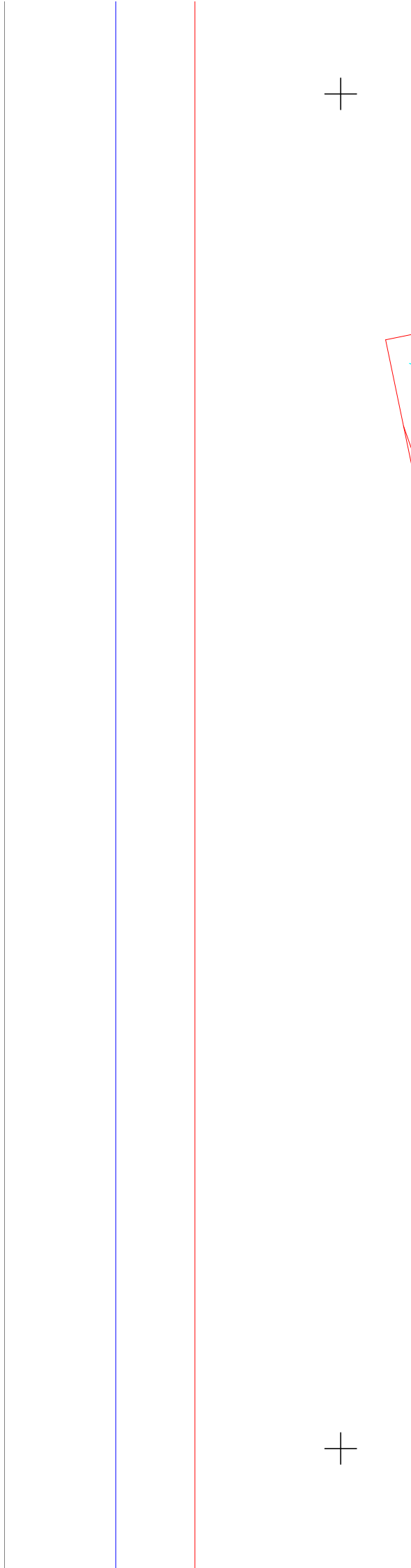
+

+

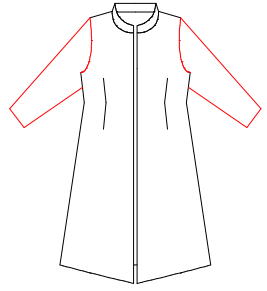
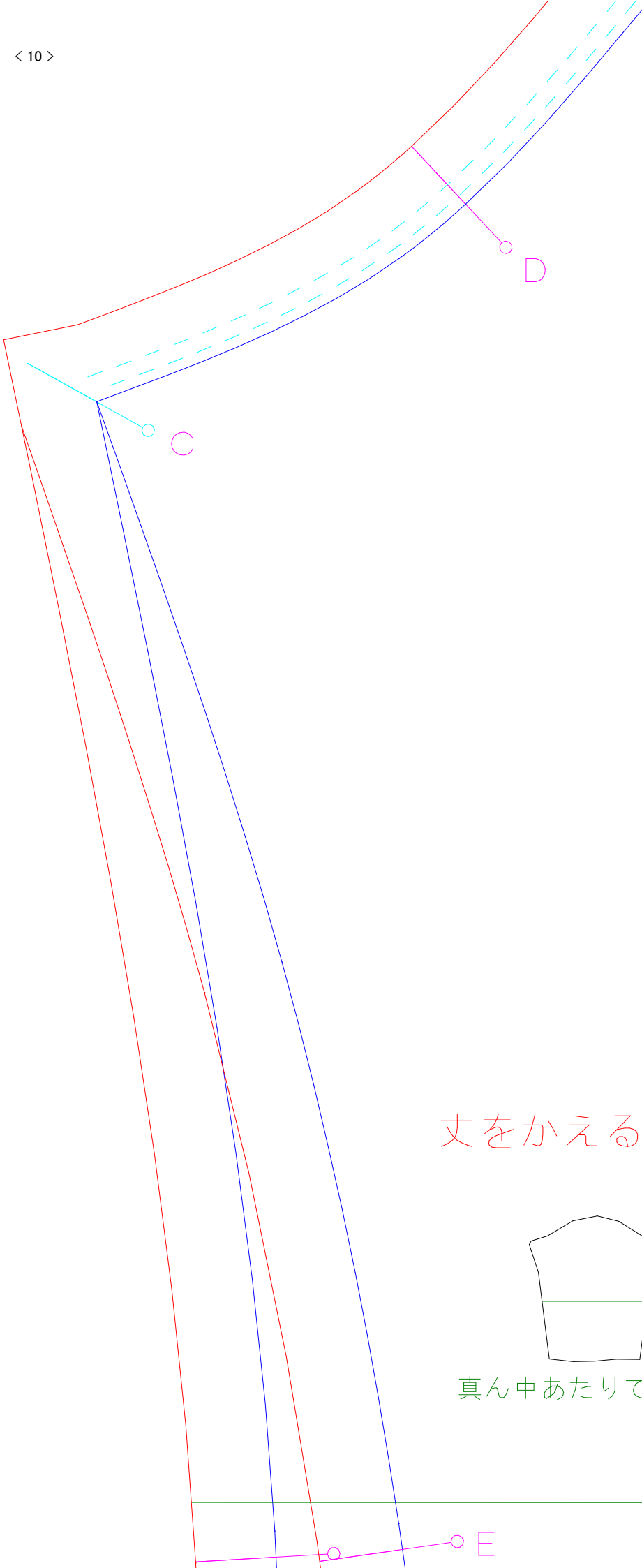


< 8 >

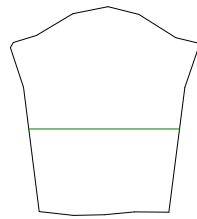




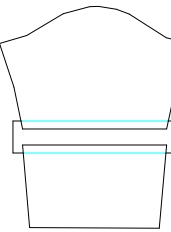




丈をかえるには



真ん中あたりで分割します

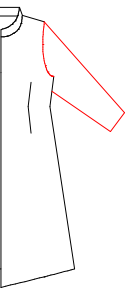


伸ばしたい分  
裏から紙を足

丈を増減

切って間





シンプルロングコート

長そで

裏地

左右対称に2枚

婦人 M

Simple longcoat

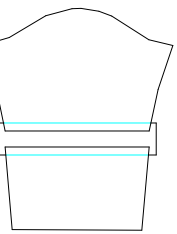
Long sleeve

(Lining)

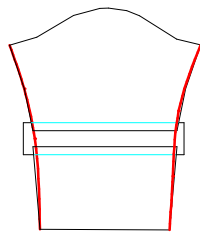
Bilateral symmetry

×2

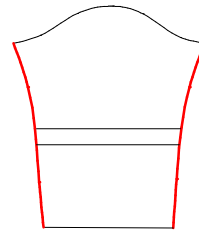
Lady's M



ほしい分広げて、紙を足します



滑らかになるように線をつなぎ直します



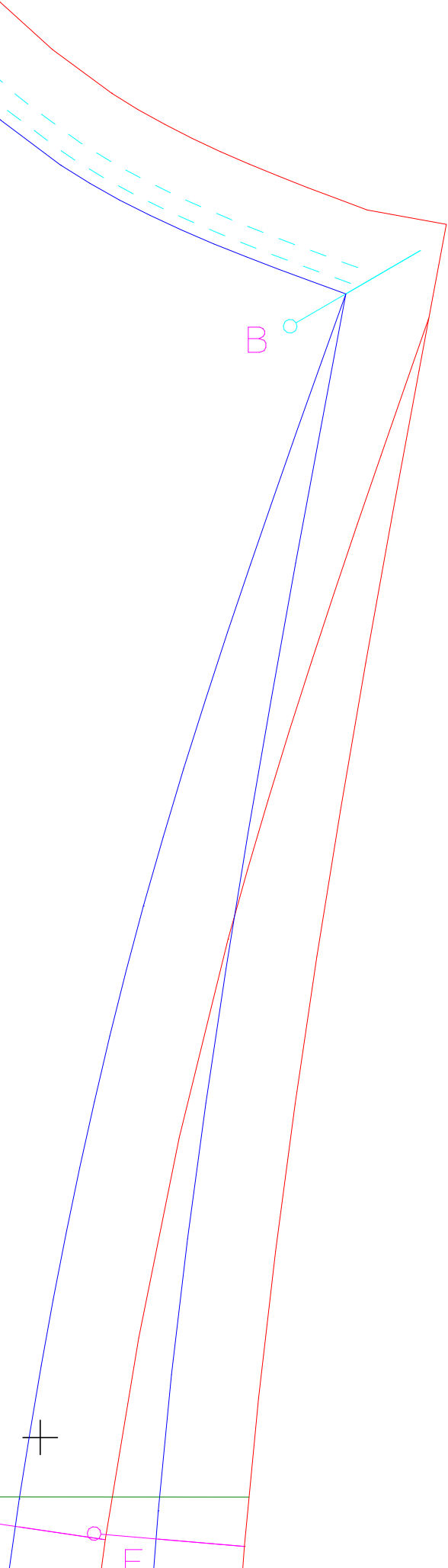
余分を切り落とす



丈を増減したい時は↓この線で

切って間に伸ばしたい分紙を足したり





前身頃

裏地

左右対称に2枚

婦人 M

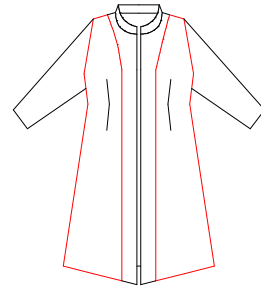
Simple longcoat

Front (Lining)

Bilateral symmetry

× 2

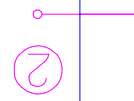
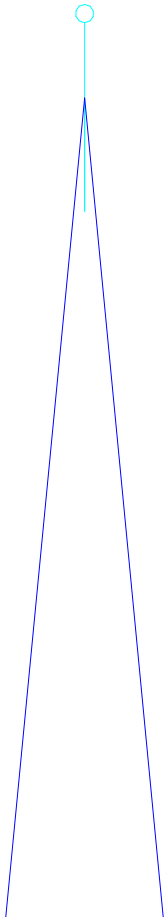
Lady's M



⑤

$\langle 14 \rangle$



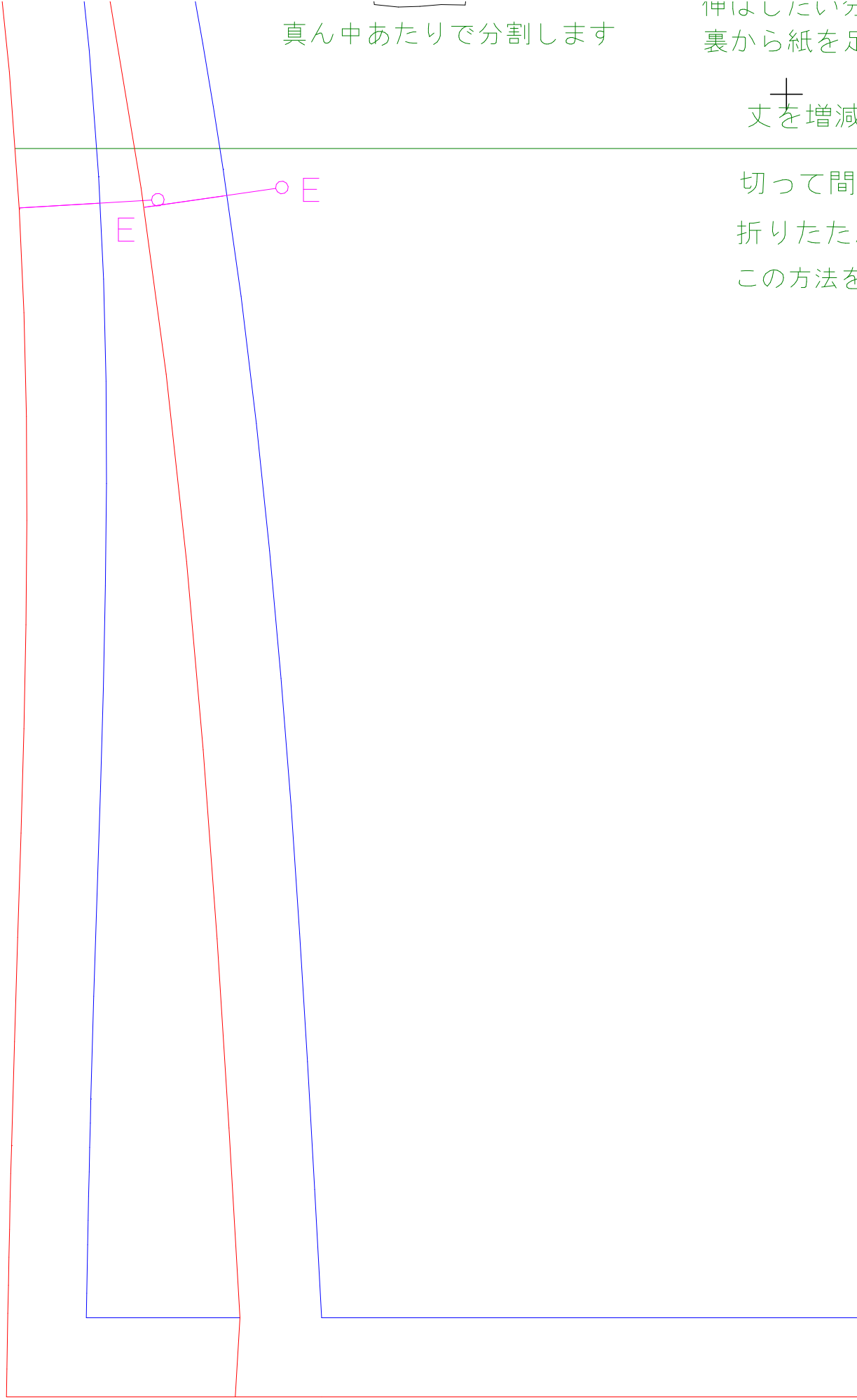


真ん中あたりで分割します

伸ばしたい分  
裏から紙を足

丈を増減

切って間  
折りたた  
この方法を



したい分広げ、  
から紙を足します

幅がなるように  
線をつなぎ直します

余分を切り落とす

↑  
丈を増減したい時は↓この線で

切って間に伸ばしたい分紙を足したり

折りたたんで短くしたりと調節してください

この方法を覚えていると他の型紙でも簡単に応用がききますよ

E ○ ○

+

+

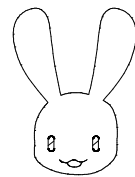
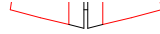


< 18 >



E





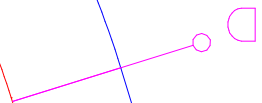
< 20 >



③

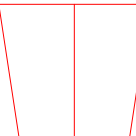


④



D

height 158 (cm)

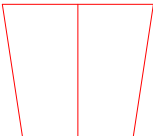


Bilateral symmetry

× 2

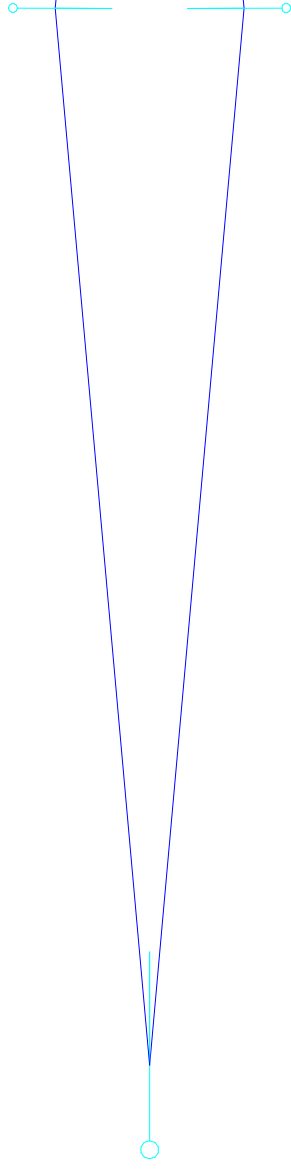
Lady's M

M size = Bust 83, Waist 67, Hip 91, height



+

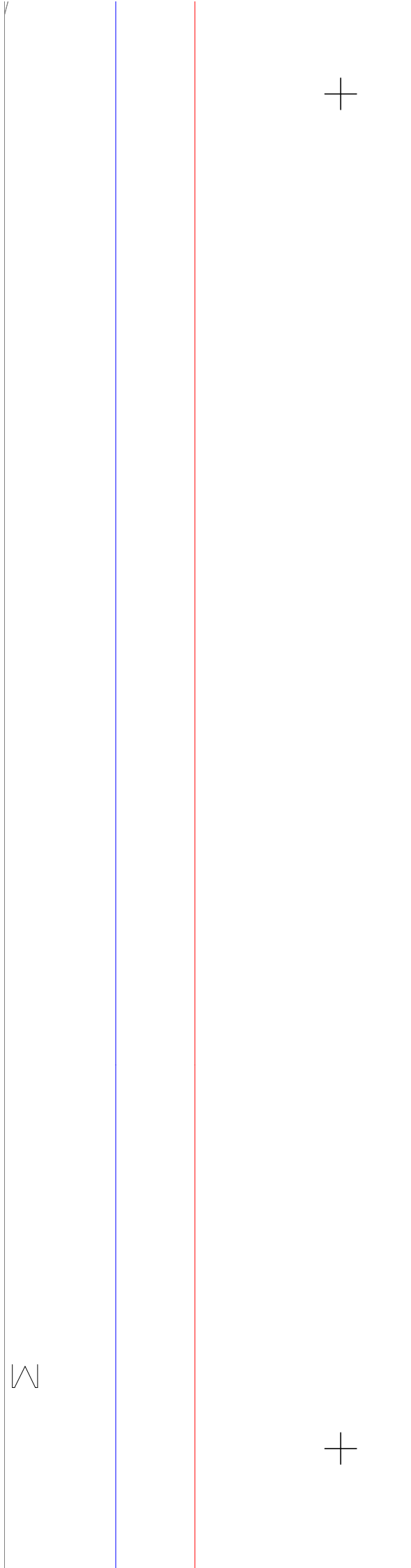
+

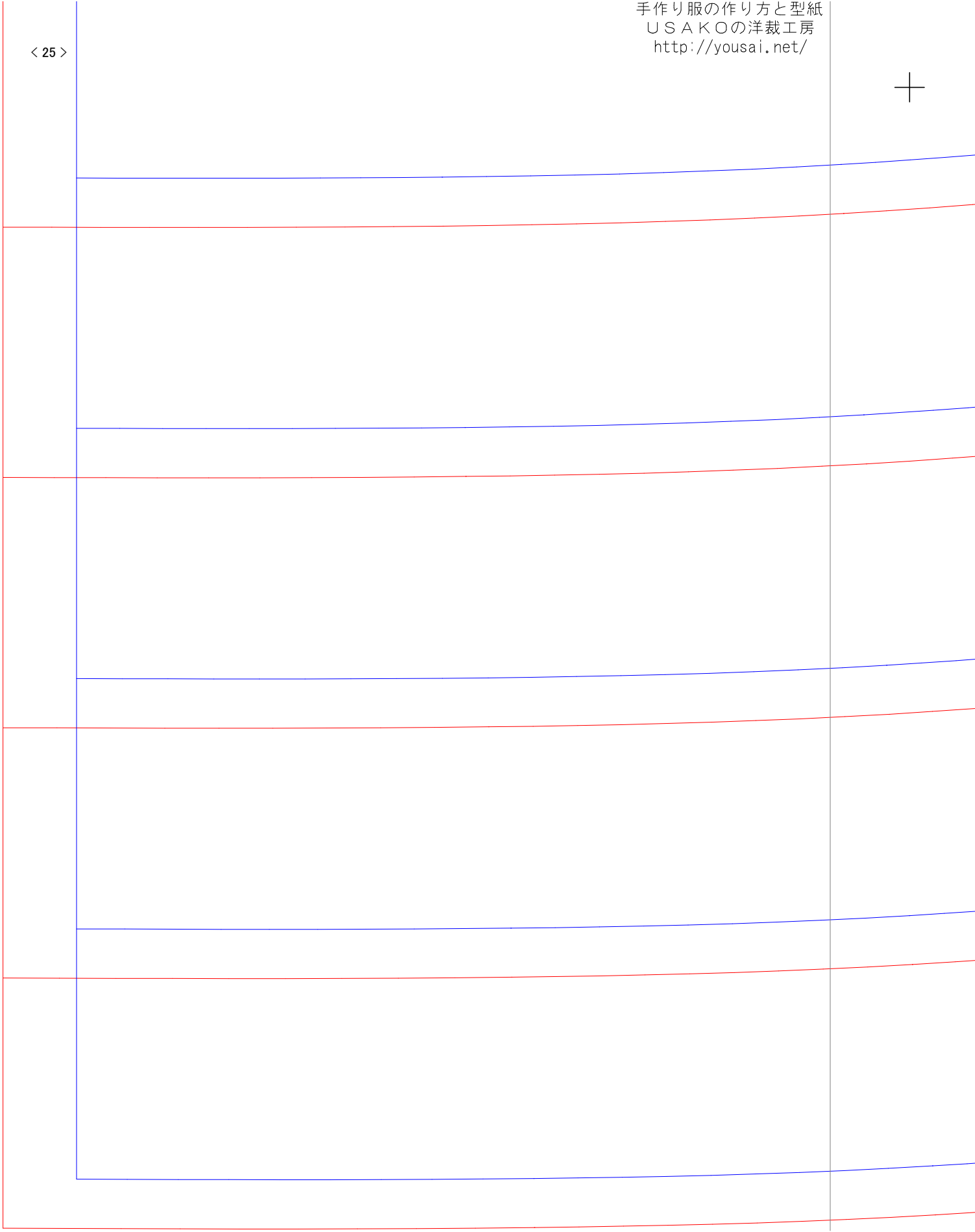


< 21 >

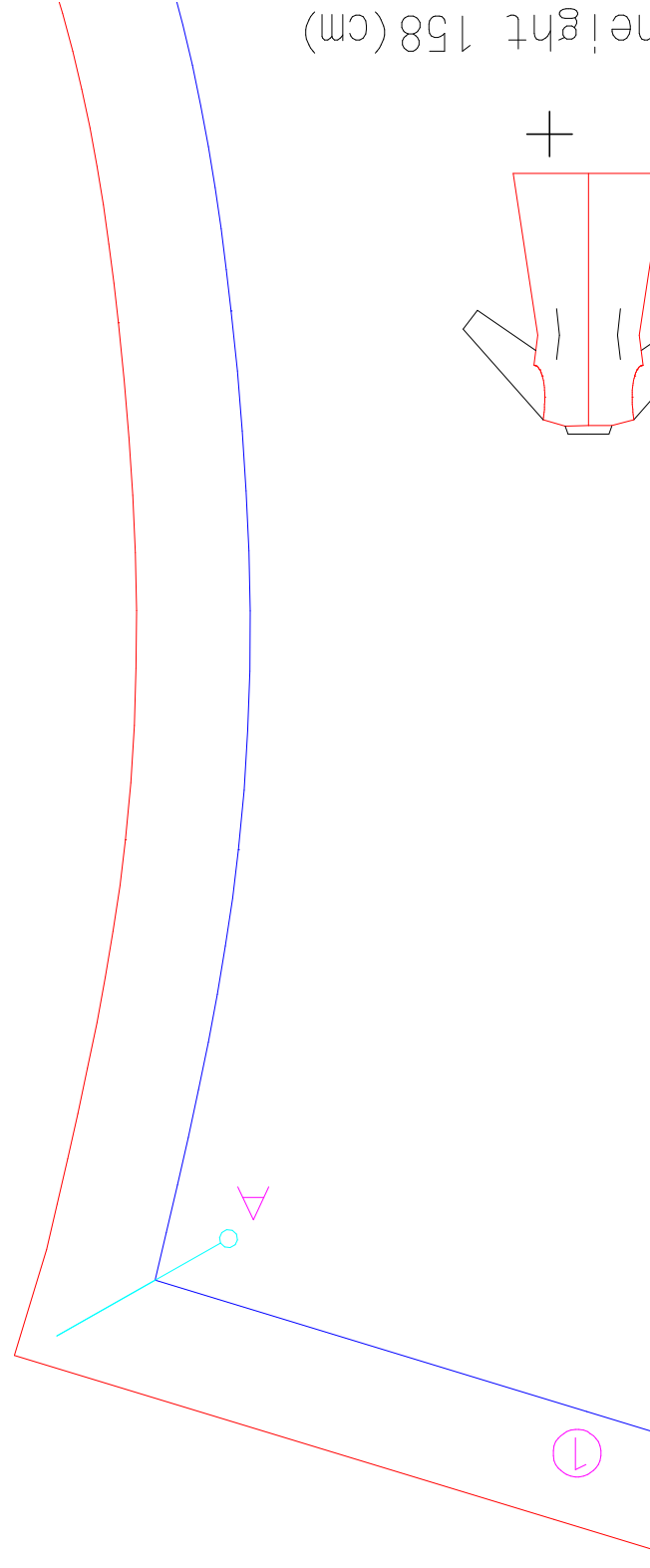
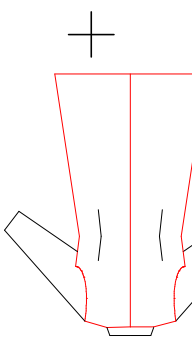
+

+

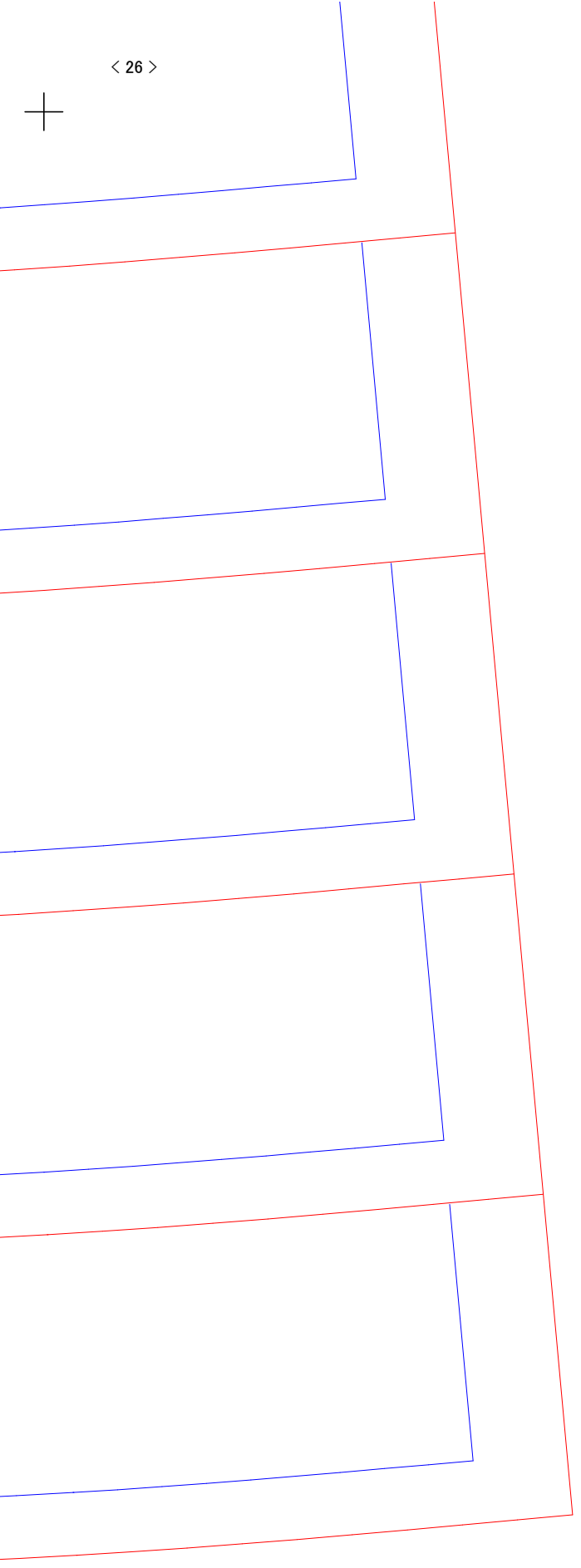




height 158 (cm)



< 26 >





M size = Bust 83, Waist 67, Hip 91, height

< 27 >

Lady's M

× 2

Bilateral symmetry

(Lining)

Back

Simple longcoat

婦人 M

左右対称に2枚

裏地

後身頃

シンプルロングコート

