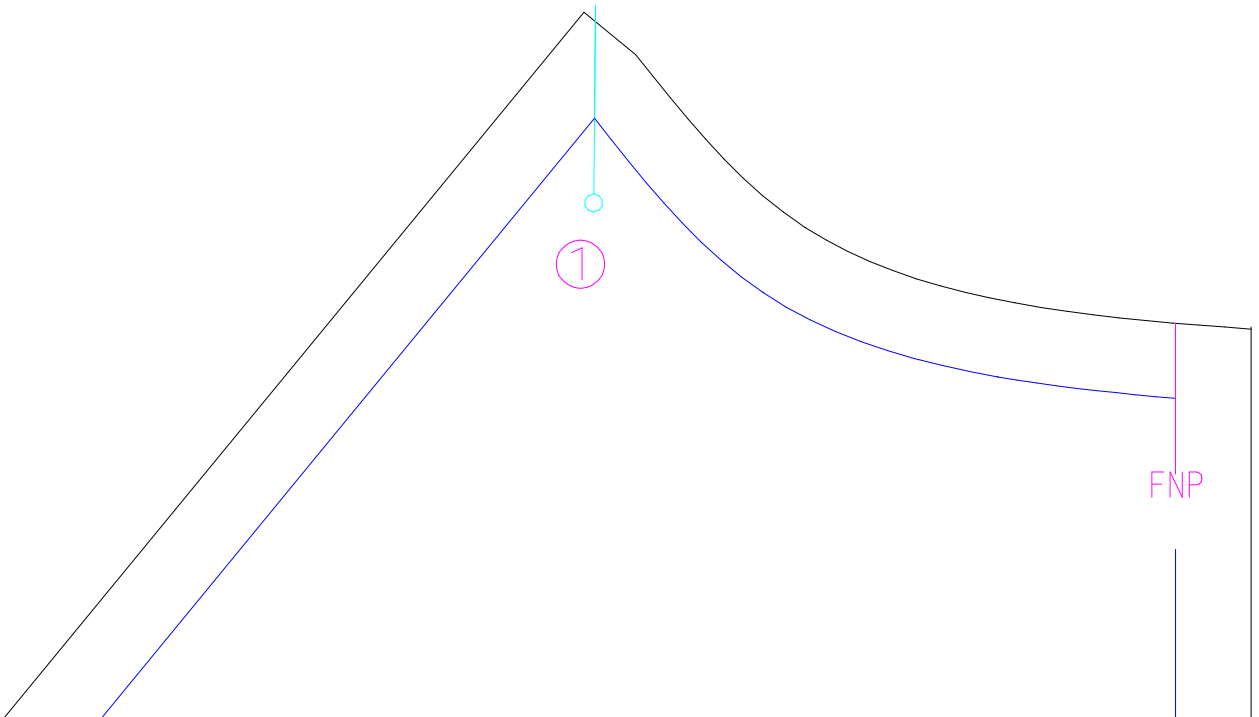
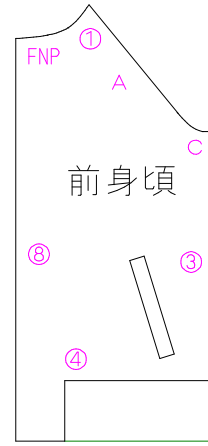
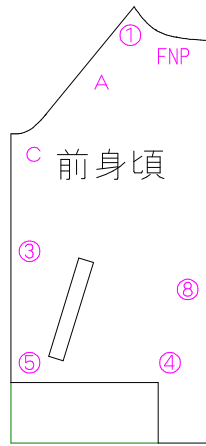
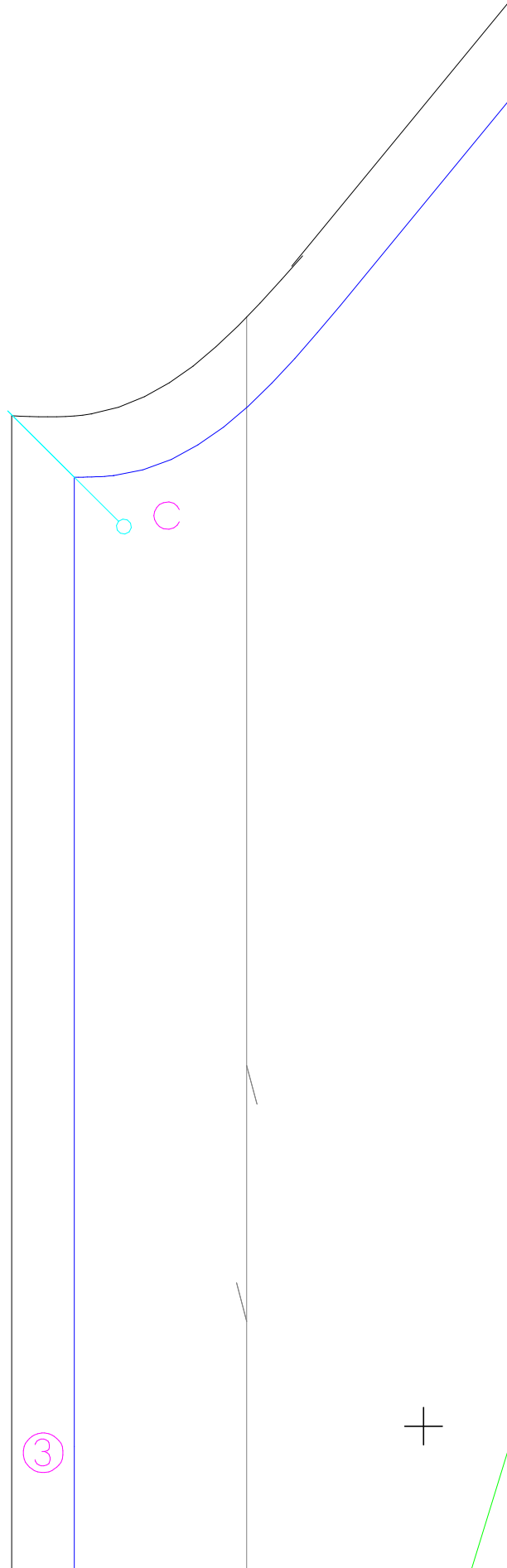


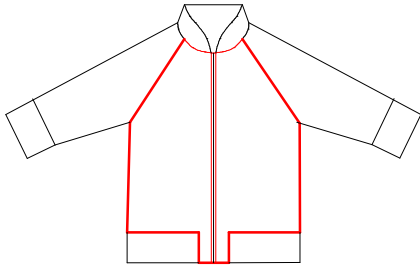
1	2
3	4
5	6





<4>

A



ジャージ・スタジャン

前身頃

左右対称に2枚

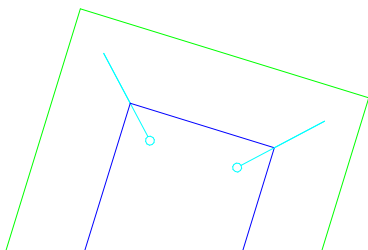
ボタンの大きさはお好みで

婦人M

Letter jacket

Front

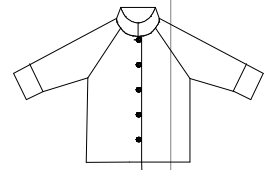
× 2 (bilateral symmetry)





③

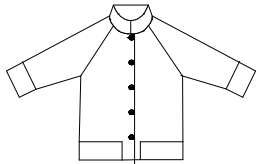
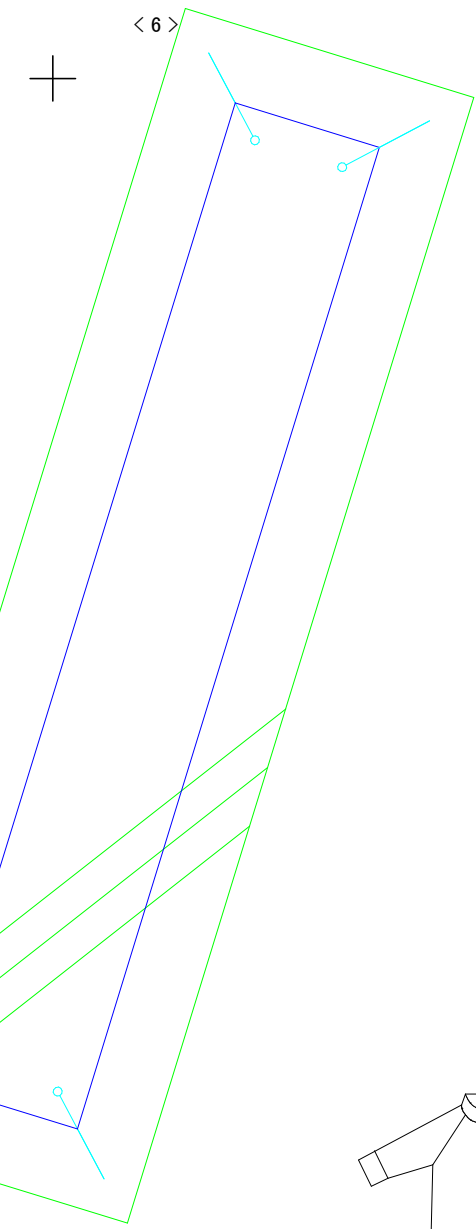
⑤



リブをつけ



<6>



リブをつける場合はこの線

リブをつけない場合はこの線

④

⑦