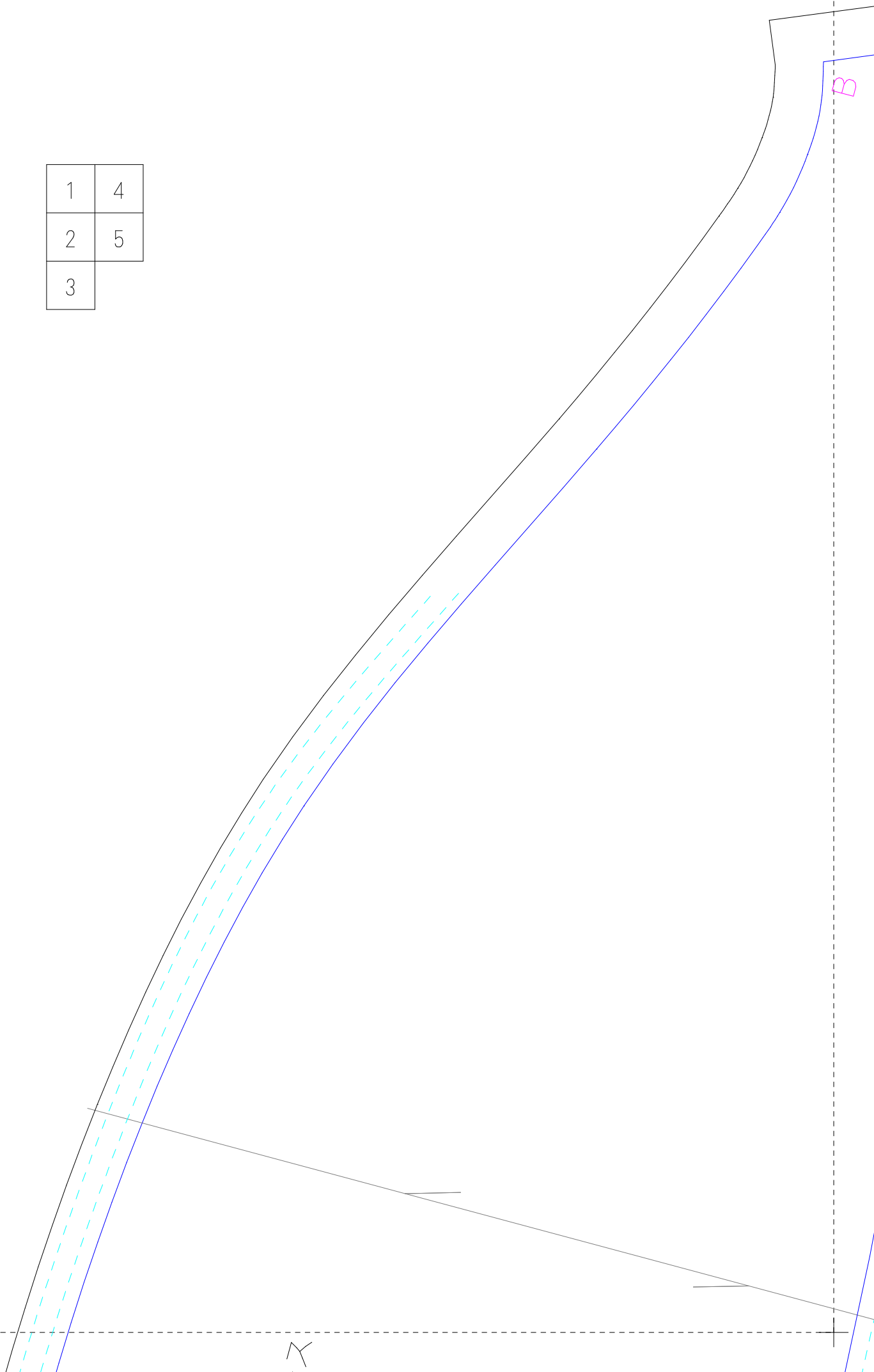


1	4
2	5
3	



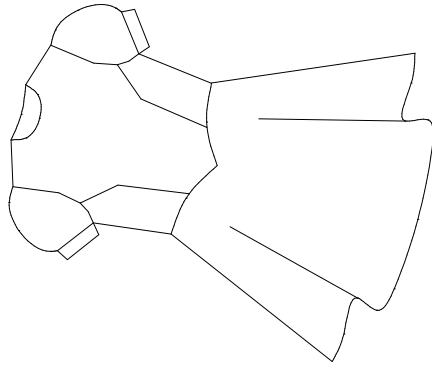
A

ギャザーを寄せる

後ろがフリルのワンピース  
半そでパフスリーブ  
左右対称に2枚  
婦人 LL

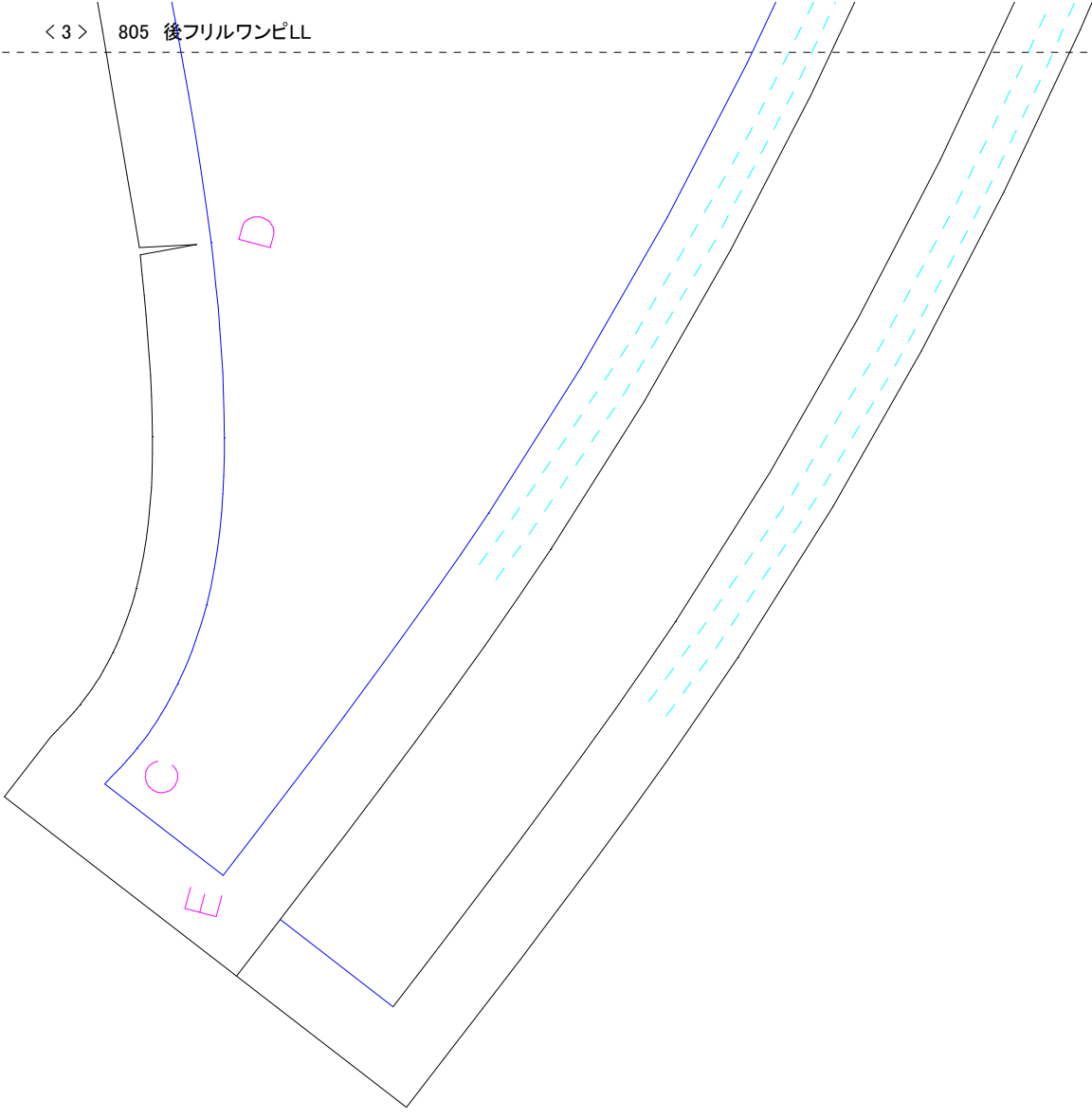
Back frill of dress  
Puff sleeve

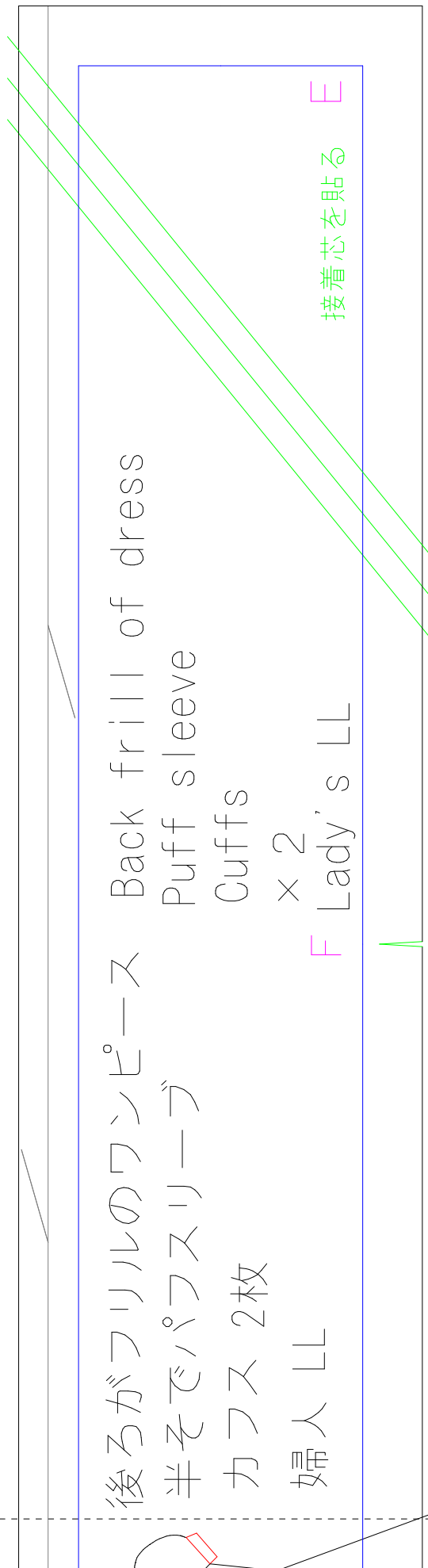
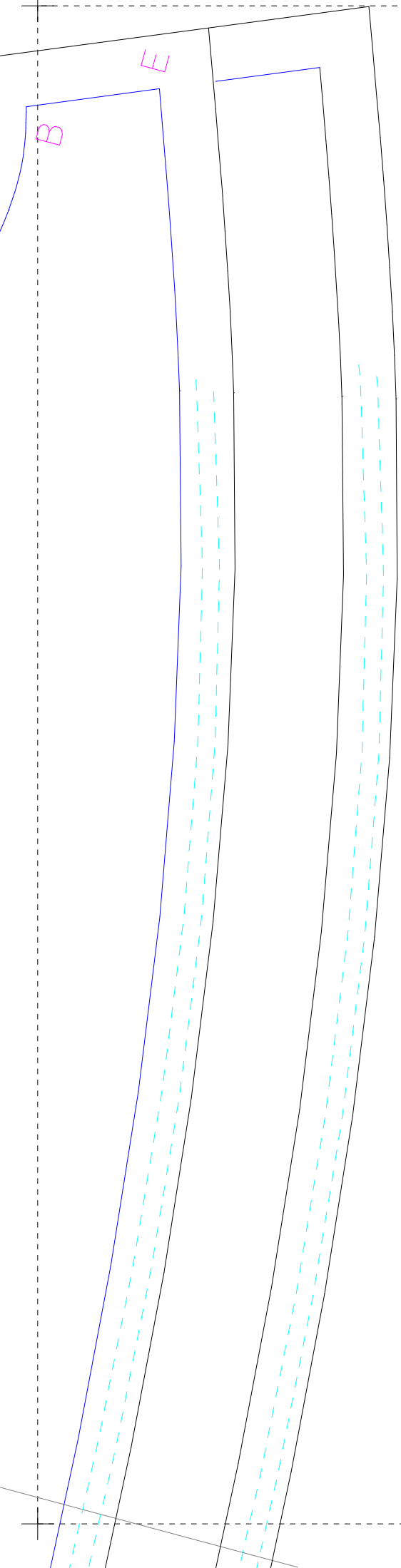
x 2 (bilateral symmetry)  
Lady's LL



袖文は2種類選べます

F ギャザーを寄せる

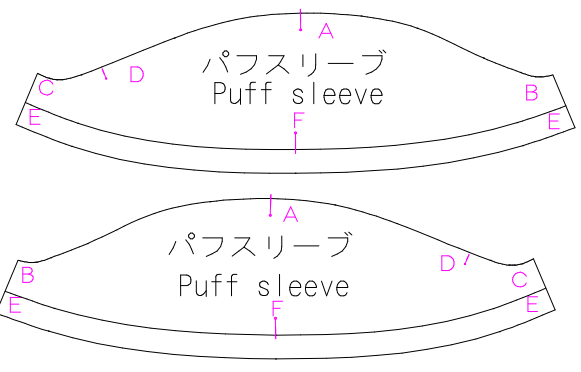
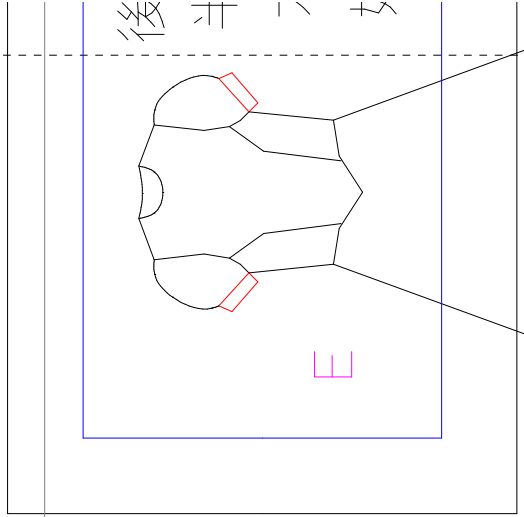
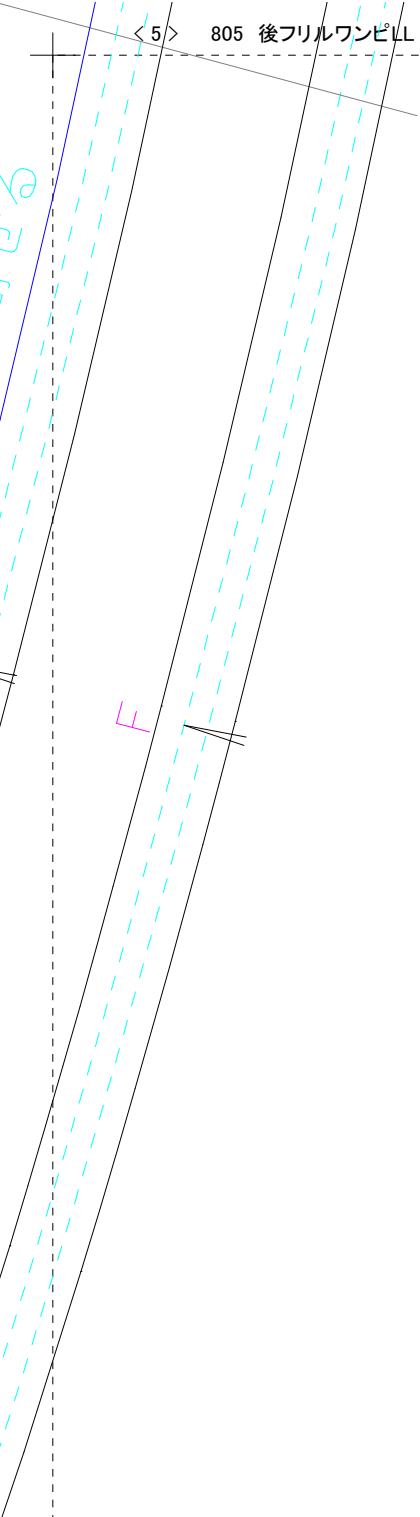




後ろがフリルのワンピース Back frill of dress  
 半そでパフスリーブ Puff sleeve  
 カフス 2枚 Cuffs  
 婦人 LL × 2  
 F Lady's LL

接着芯を貼る

E



E カフス F Cuffs E

E カフス F Cuffs E