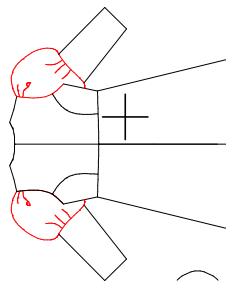
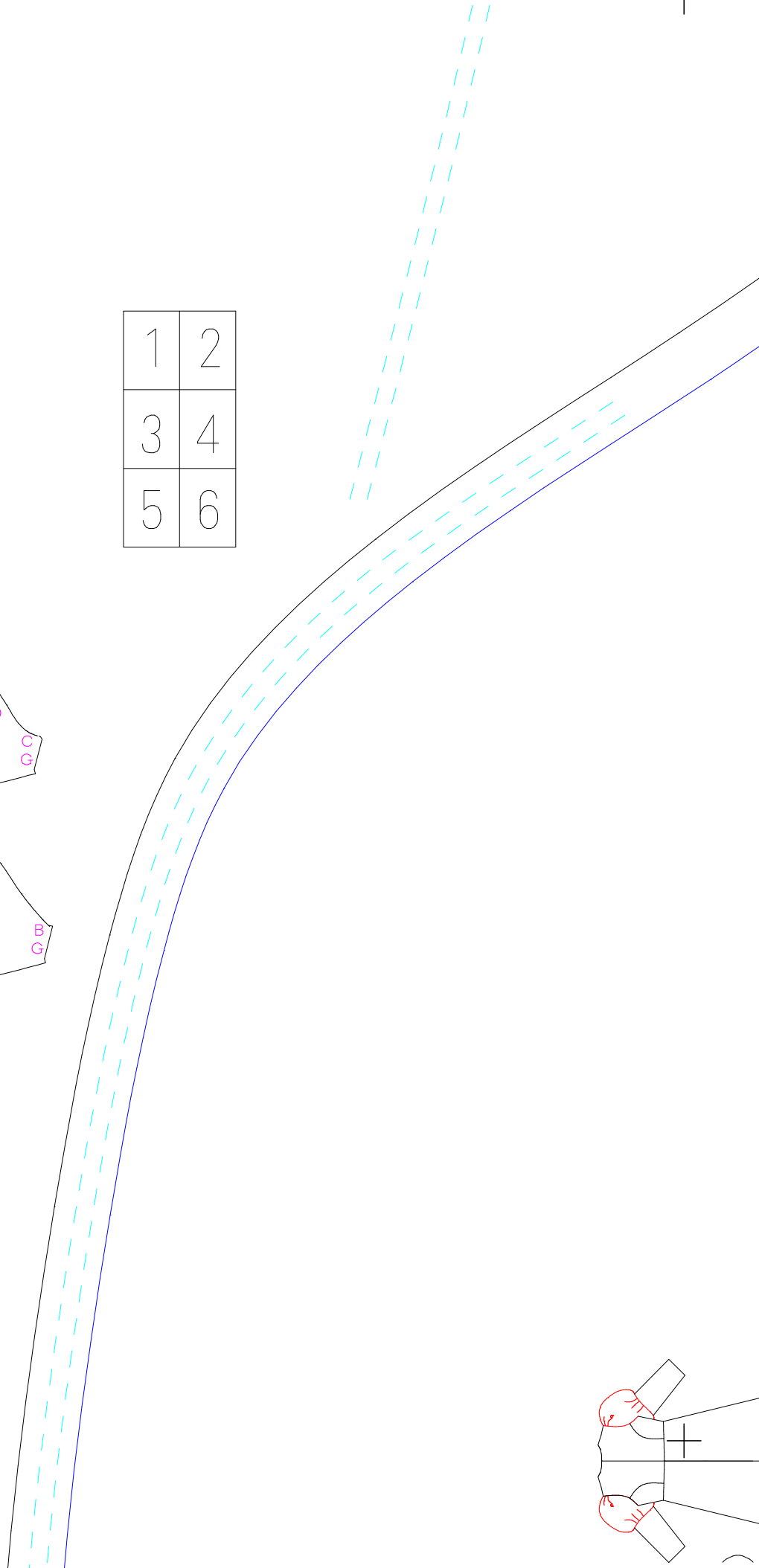
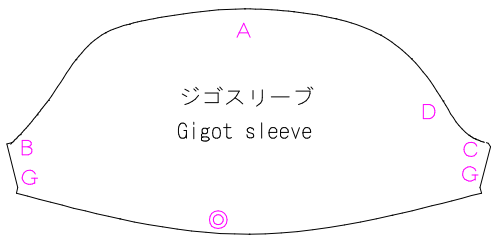
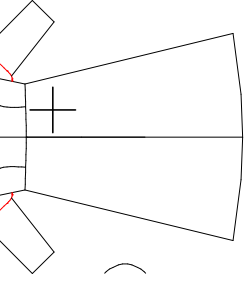
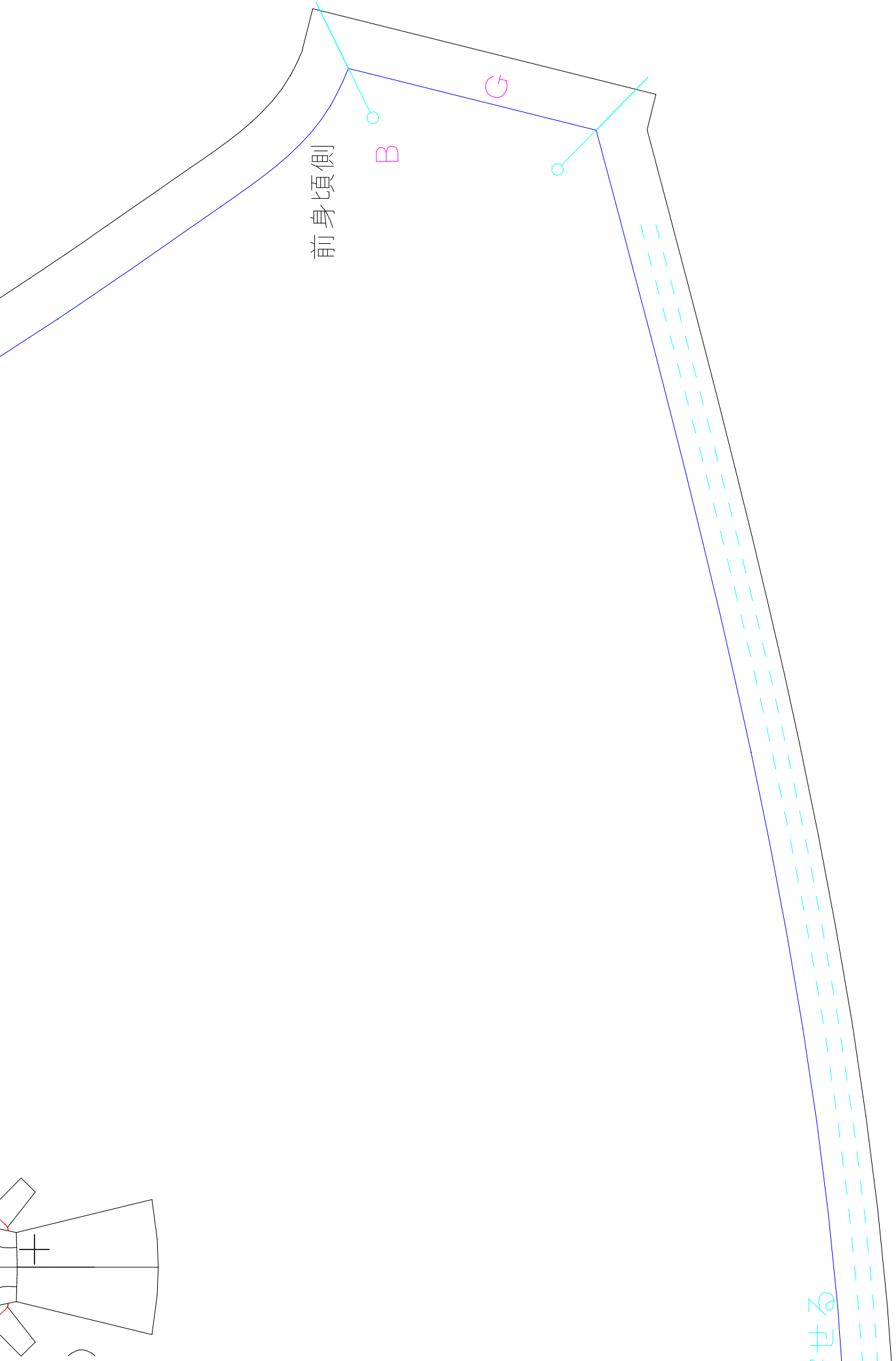




1	2
3	4
5	6

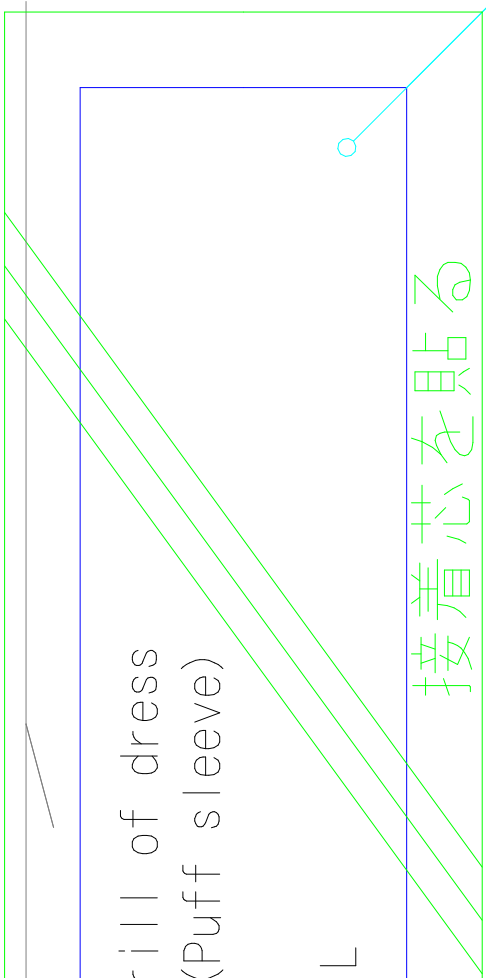




せらる



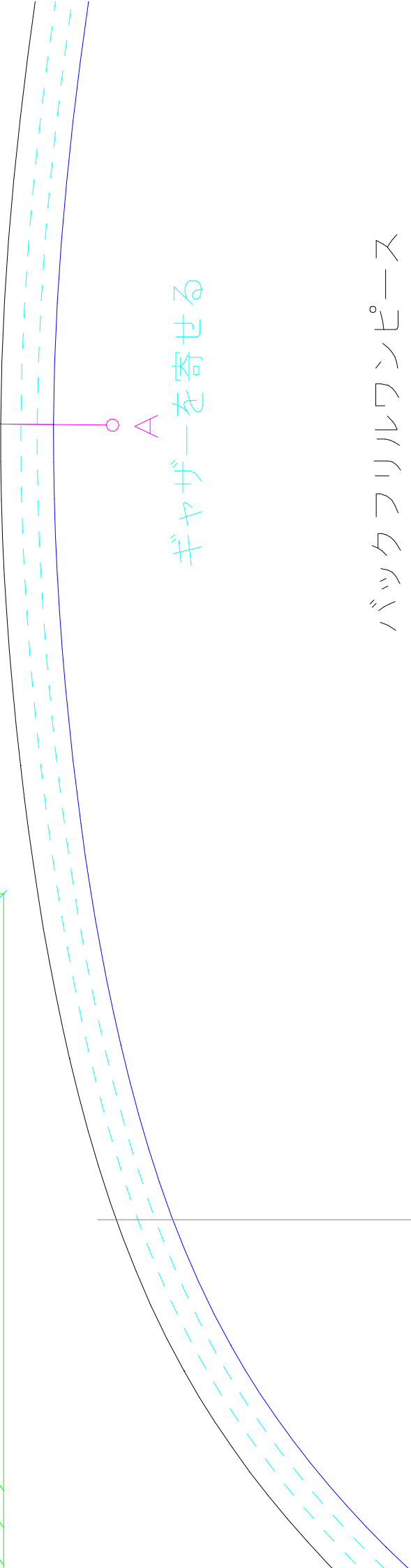
<3>



frill of dress
(Puff sleeve)

L

接着芯を貼る



ギャザーを寄せる

A

バックフリルワンピース

ジゴースリーブ

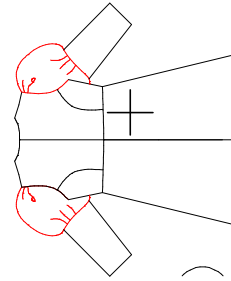
左右対称に2枚

婦人 L

Back frill of dress

Gigot sleeve

× 2 (bilateral symmetry)



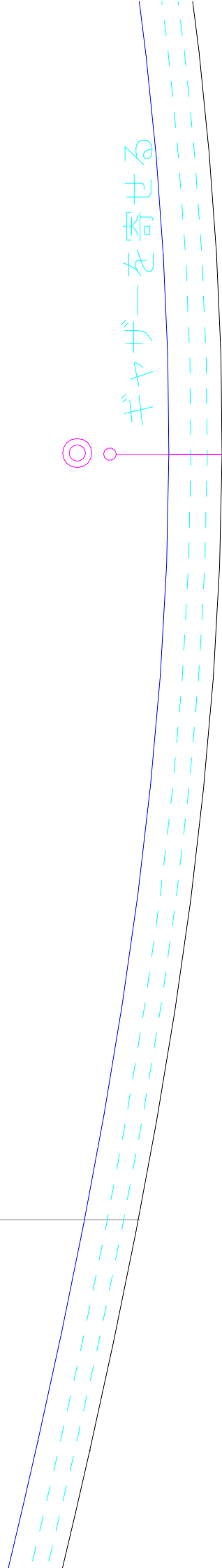
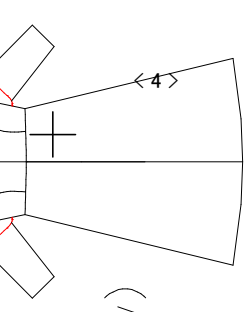
+

メを入れておく
る方が後側

Gigot sleeve

× 2 (bilateral symmetry)

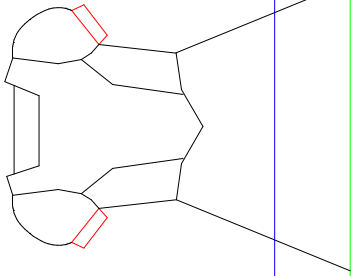
Lady's L



ギャザーを寄せる

+

+

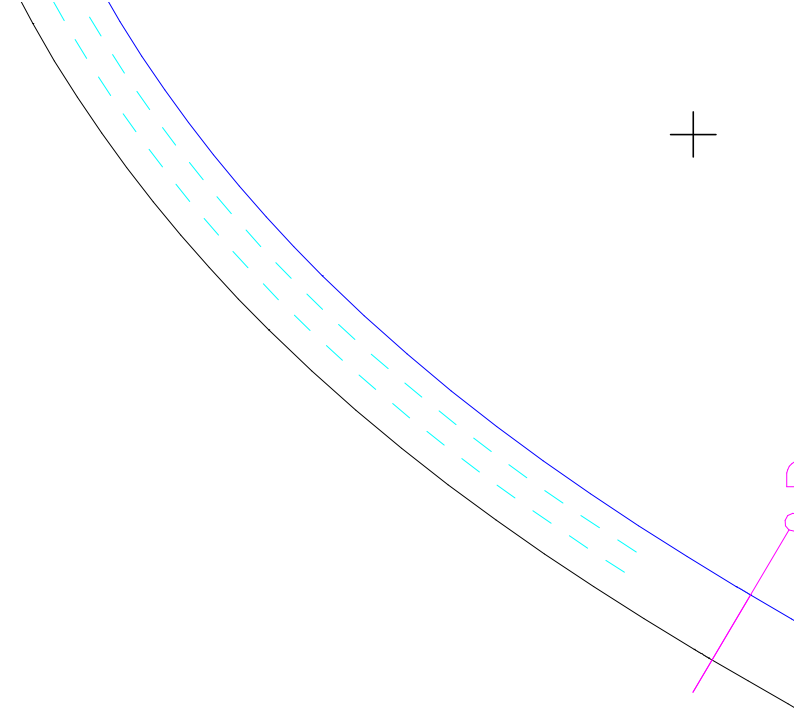


後ろフリルのワンピース
パフスリーブ カフス
2枚
婦人 L

Back frill of dress
Cuffs (Puff sleeve)
× 2
Lady's L

< 5 >

F ○



<6>

ここに切り込みを入れておく
切り込みのある方が後側

