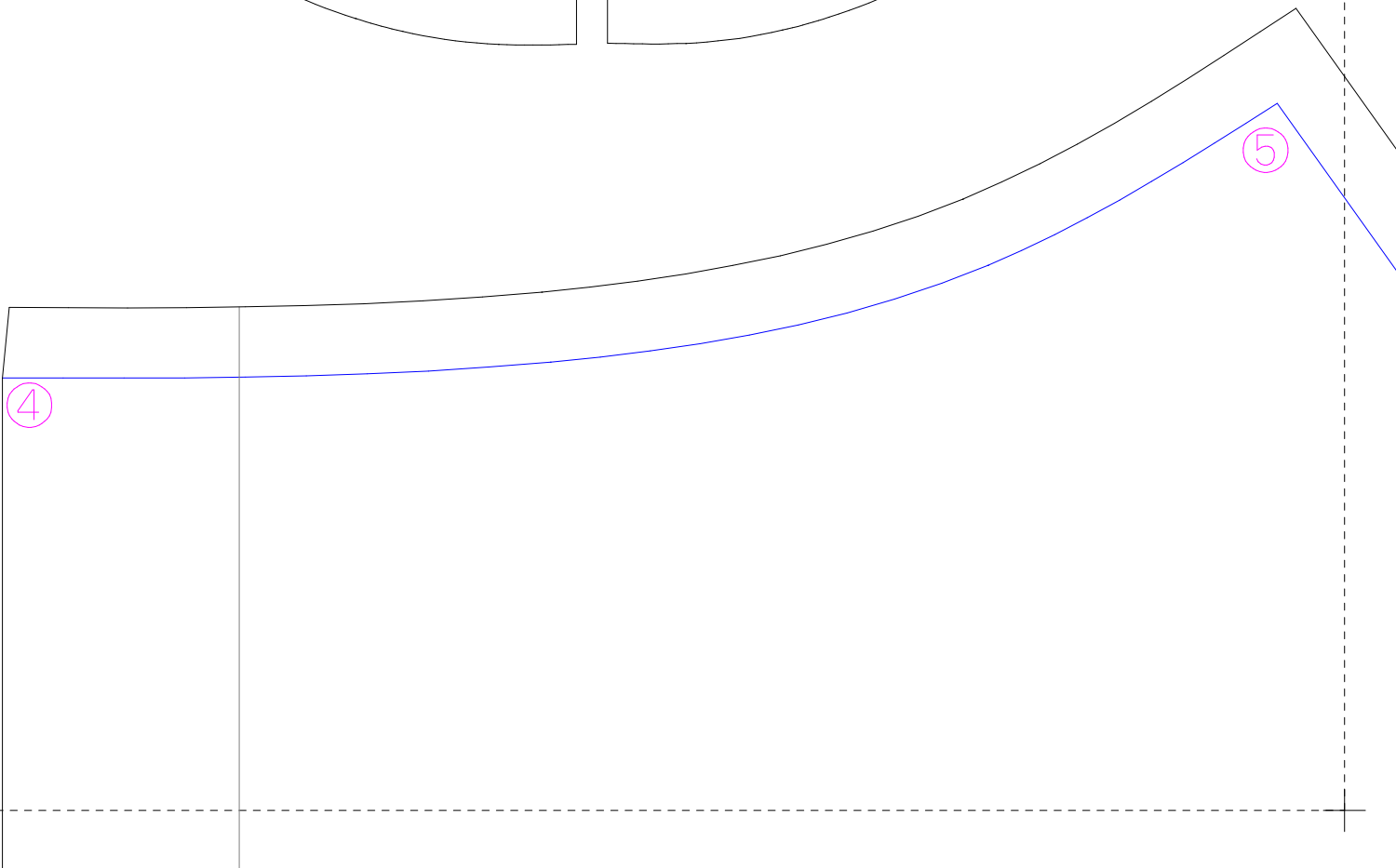
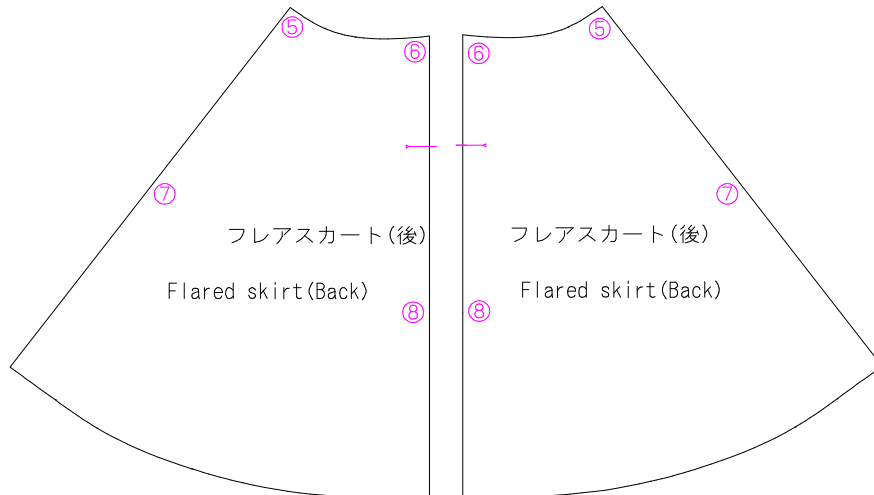


1	4	7	10
2	5	8	11
3	6	9	12

この図のように  
貼り合せてください  
先に貼り合わせてから  
切ってください



ウエスト切り替えワンピースA  
フレアスカート(前)

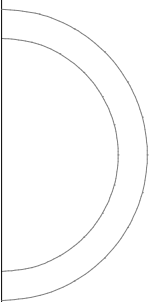
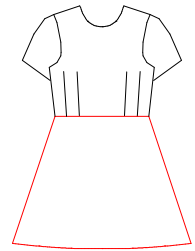
1枚

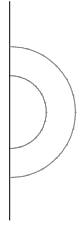
婦人 S

Flared skirt(Front)

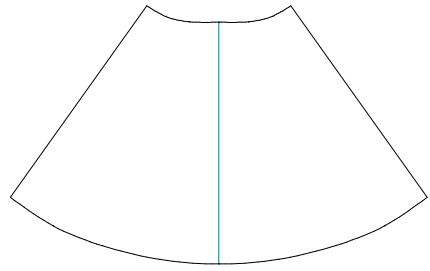
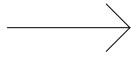
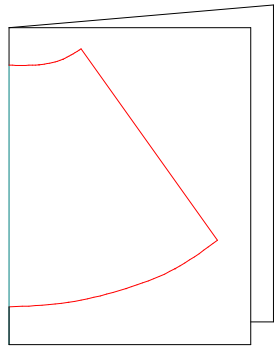
× 1

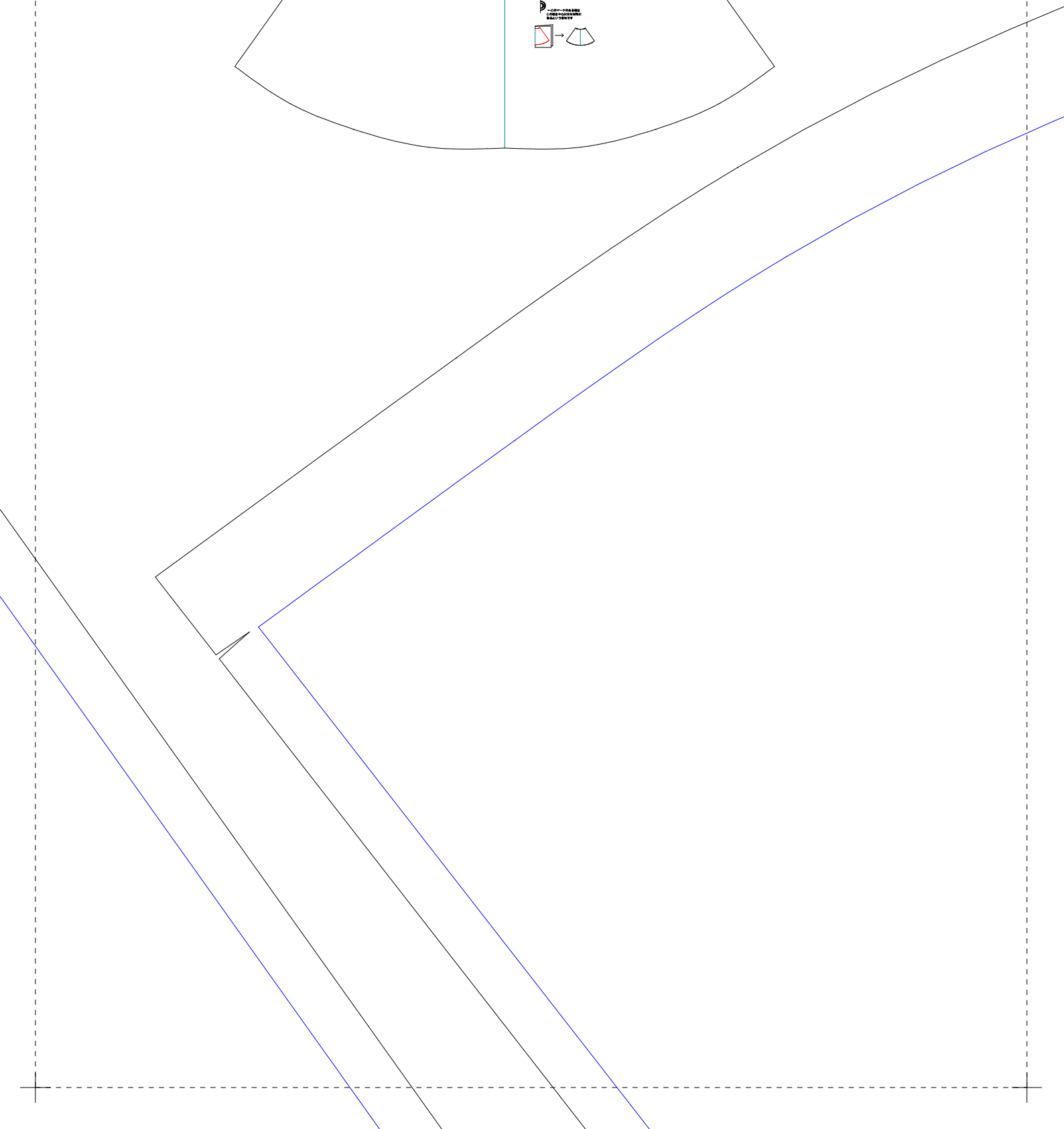
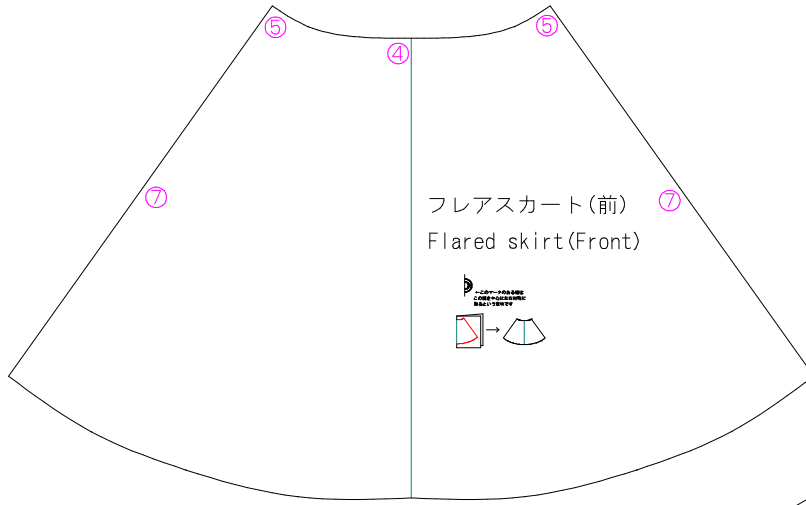
Lady's S

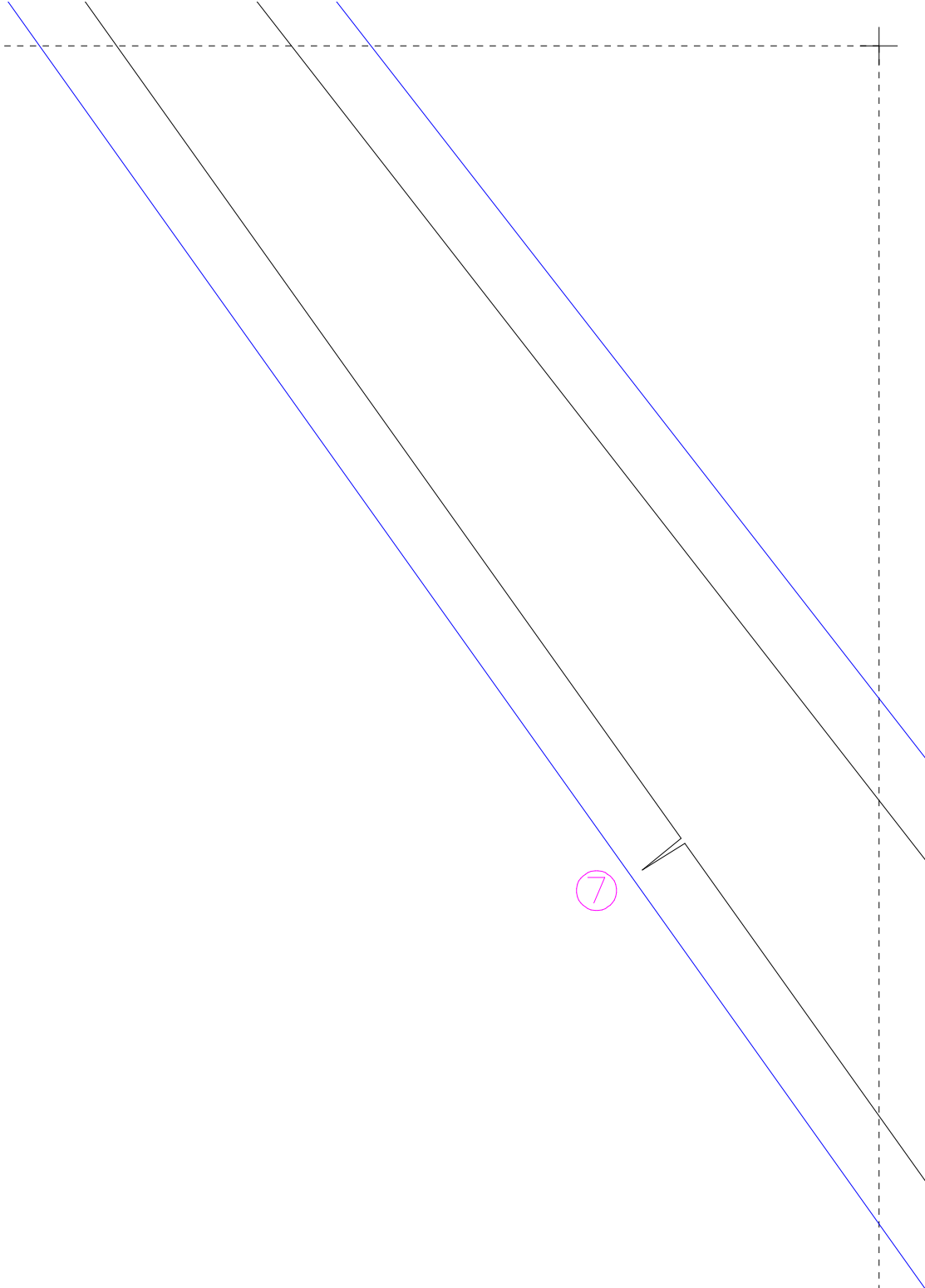


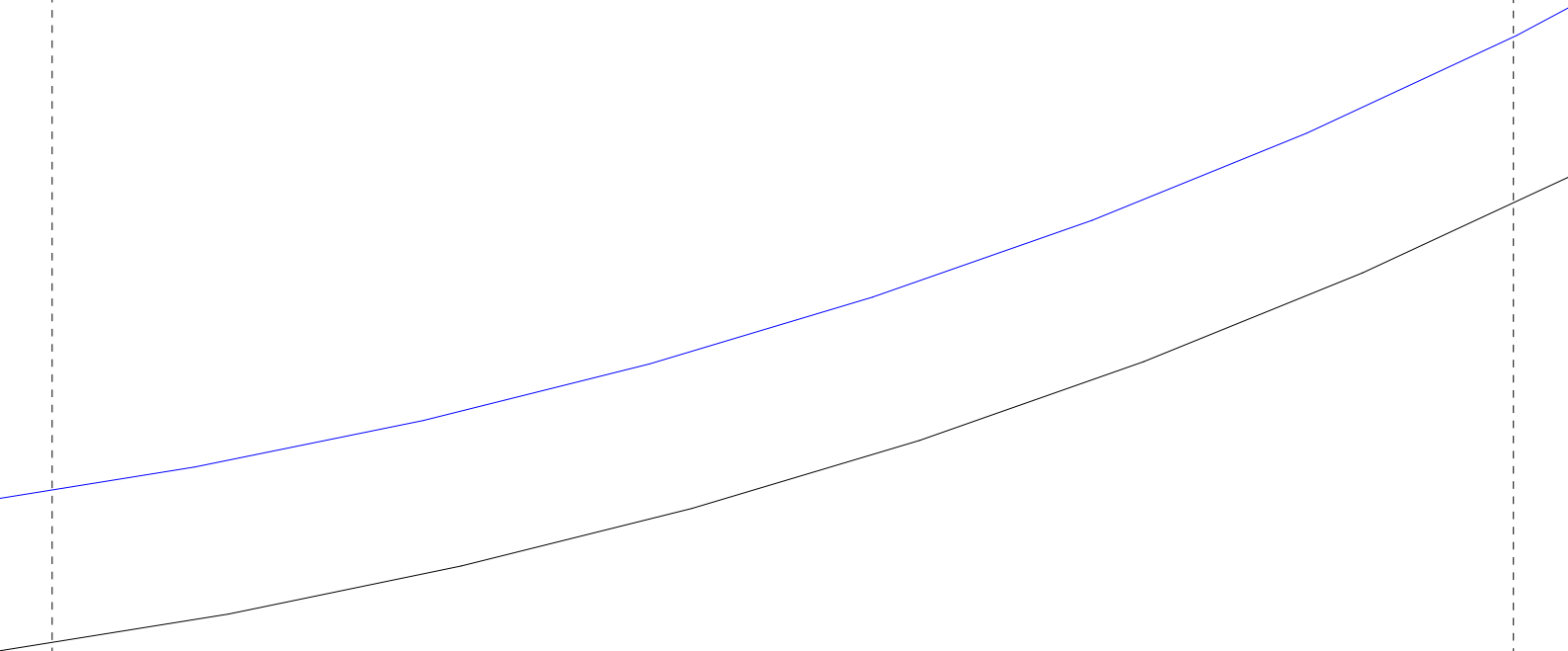


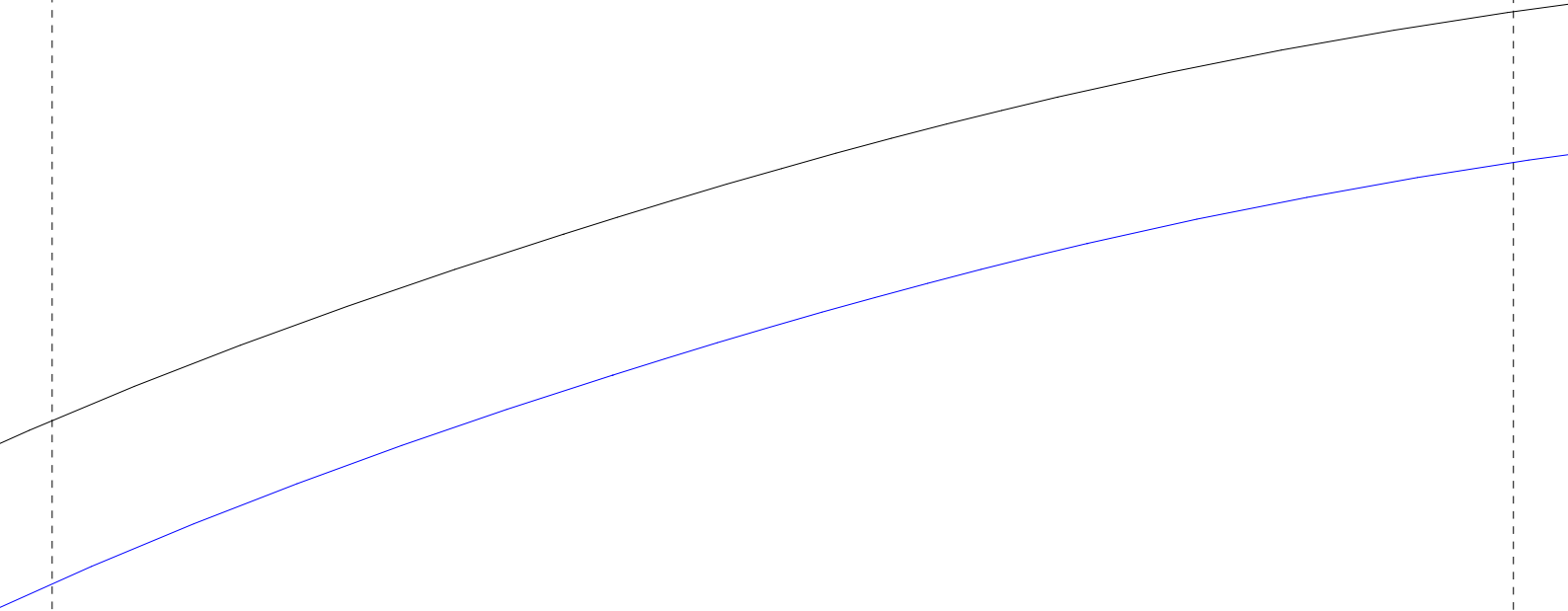
←このマークのある線は  
この線を中心に左右対称に  
取るという意味です

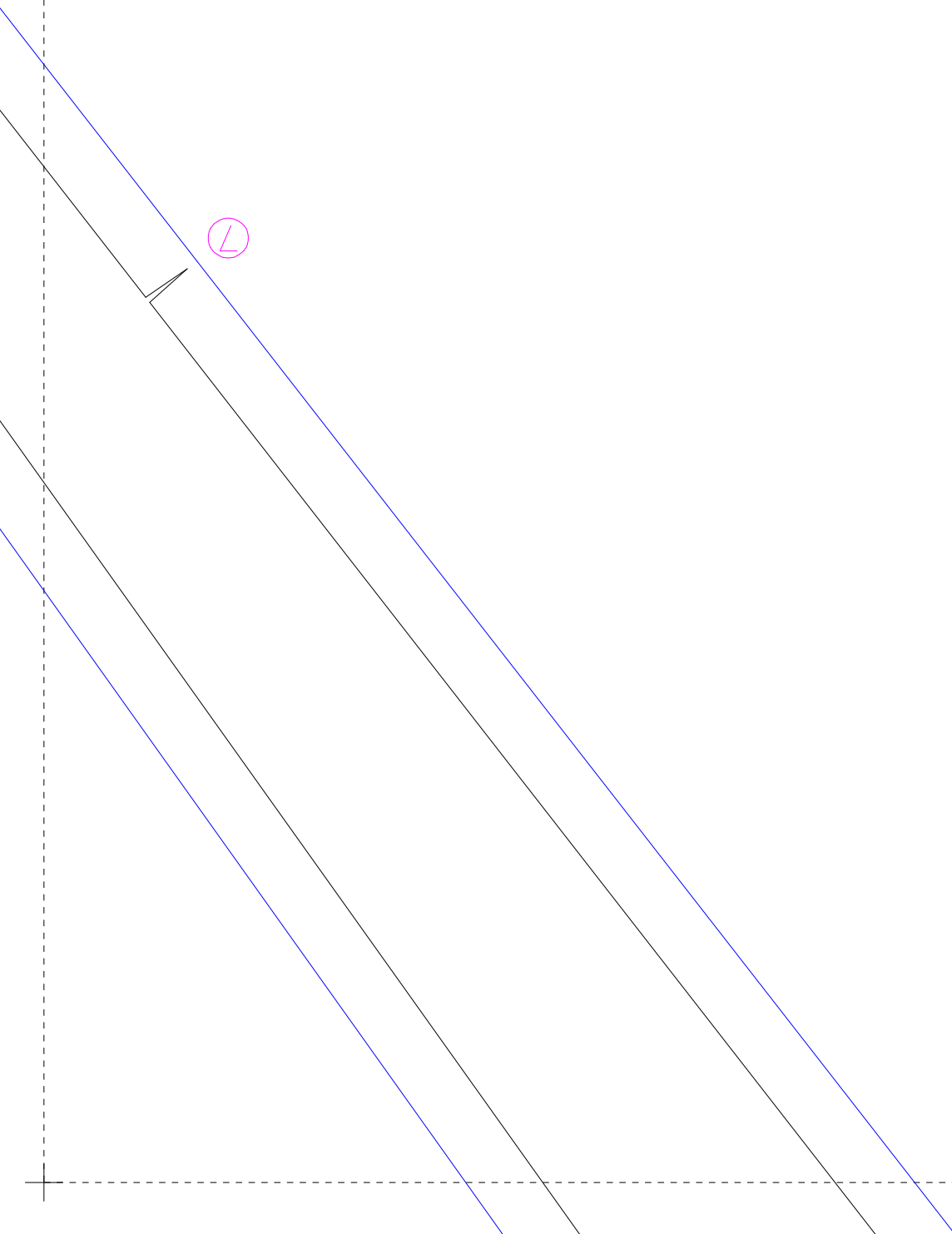




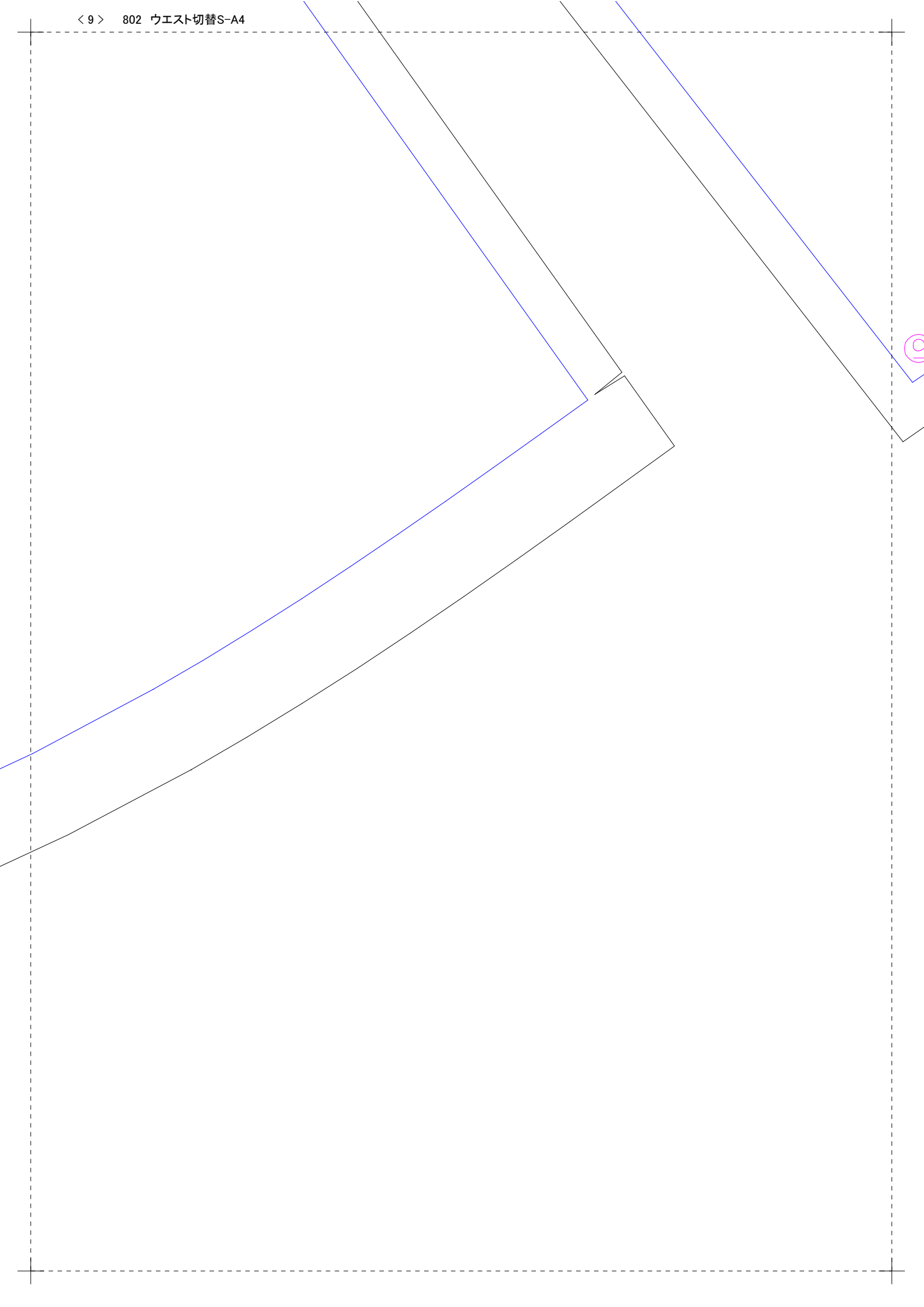













縫い代・切り取り線  
Seam margin

出来上がり・縫い合わせ線  
Finishing line



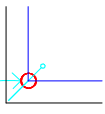
接着芯を貼る範囲  
Area that apply interfacing.

地の目 (生地)の縦の向き)  
Direction of material.  
Layer this line will parallel  
with height of material.

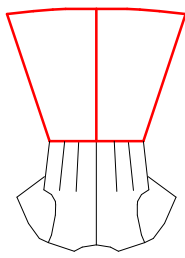
ギャザーを大せる場所  
Position where gather.

合印 (縫い合わせの印)  
合印 (縫い合わせの位置の印)  
縫い代に5~7mmほど切り込みを  
入れておくと縫い合わせがしやすい  
Snip the material as a mark.

合印 (縫い合わせの位置あわせ)  
出来上がり線の角に穴をあけて  
そこから印をつける角が合わせやすい  
Where the corner,  
drawing a point the material as a mark.



ウエスト切り替えワッペ  
 フレアスカート(後)  
 左右対称に2枚  
 婦人 S  
 Flared skirt(Back)  
 × 2 (bilateral symmetry)  
 Lady's S



←フラスナー付けここまで フラスナ

フスナー Zipper

⑥

⑤

