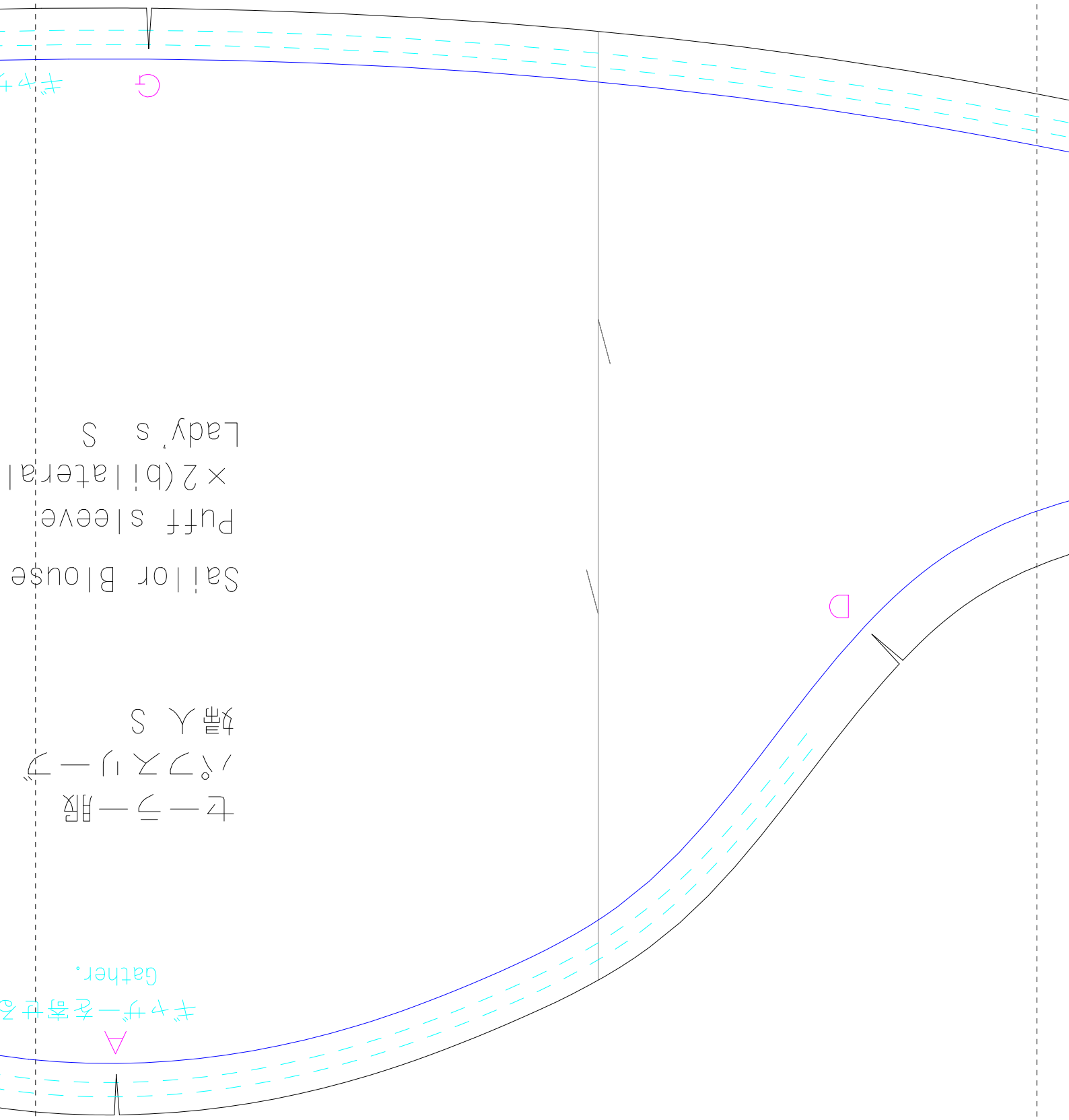


1	2	3
---	---	---

4	5
---	---

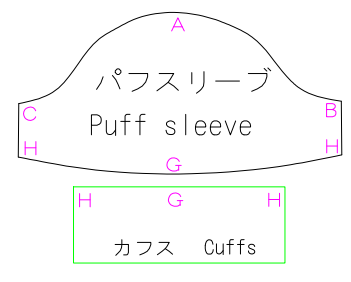
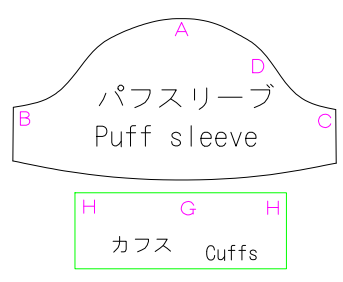
この図のように貼り合せてください
先に貼り合わせてから切ってください

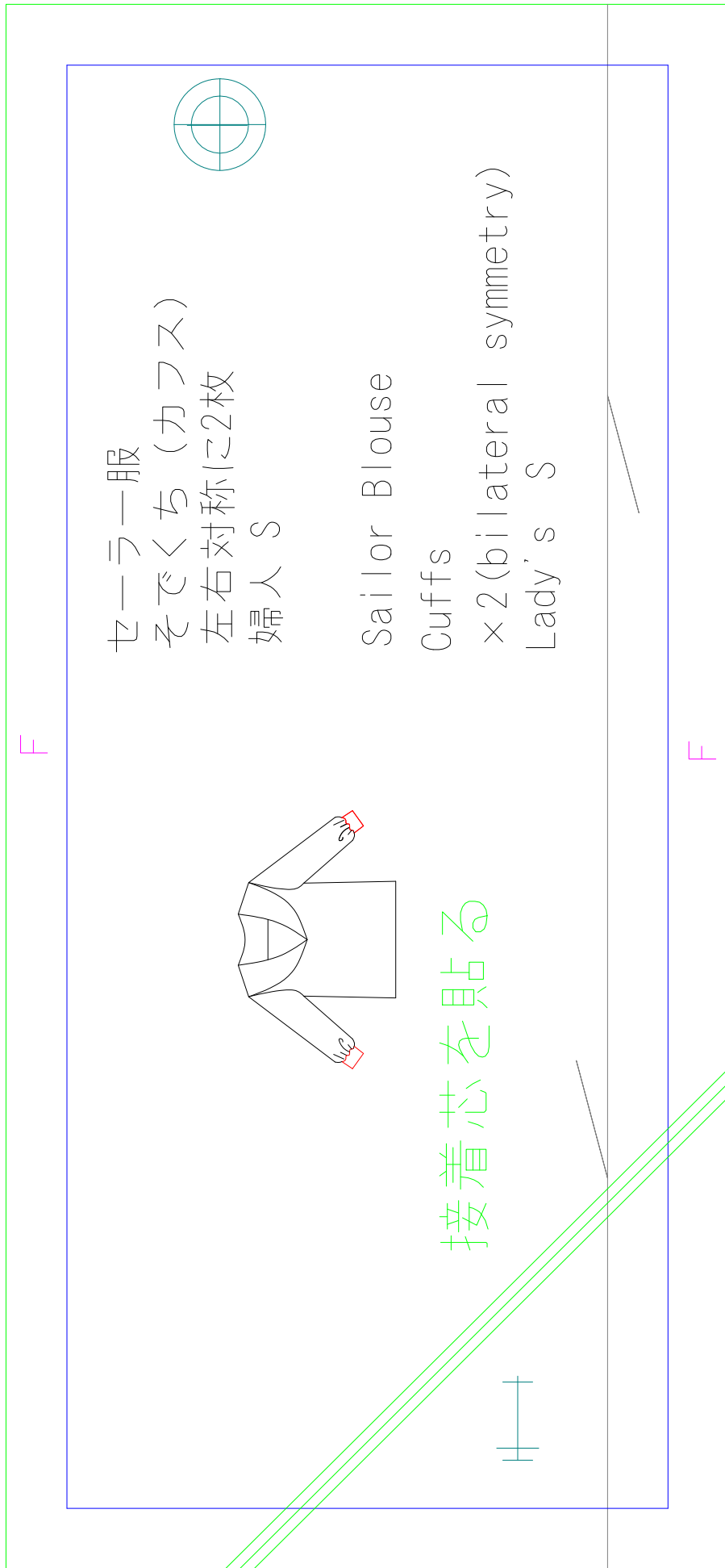
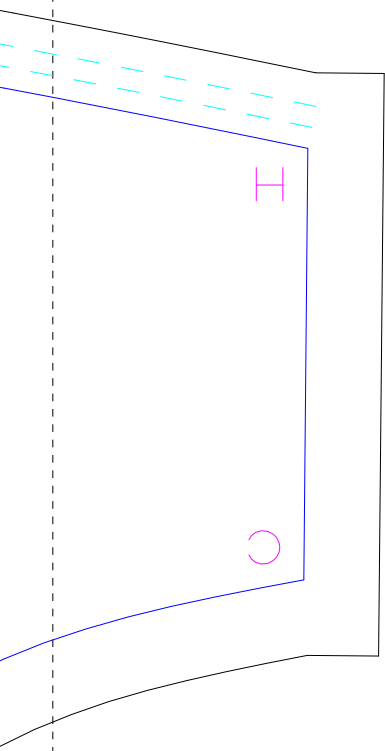


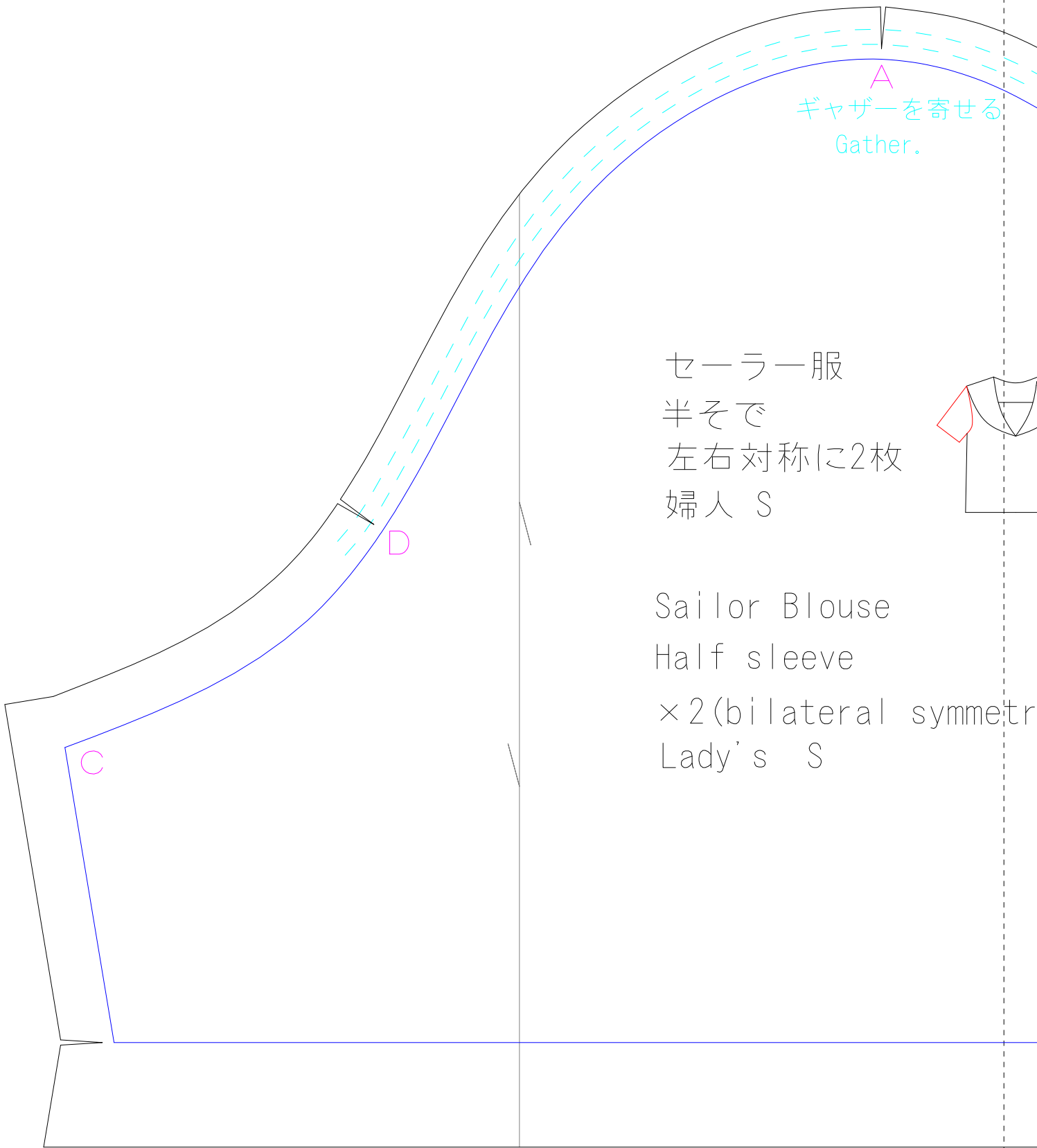
Sailor Blouse
 Puff sleeve
 ×2(bilateral)
 Lady's S

セーラー服
 パフスリーブ
 婦人 S

ギャザーを寄せる
 Gather.

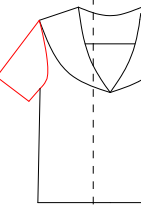




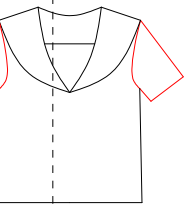
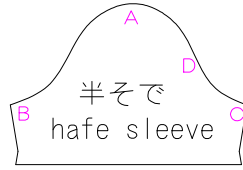
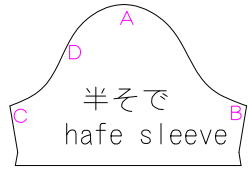


A
ギャザーを寄せる
Gather.

セーラー服
半そで
左右対称に2枚
婦人 S



Sailor Blouse
Half sleeve
×2 (bilateral symmetr
Lady's S



metry)