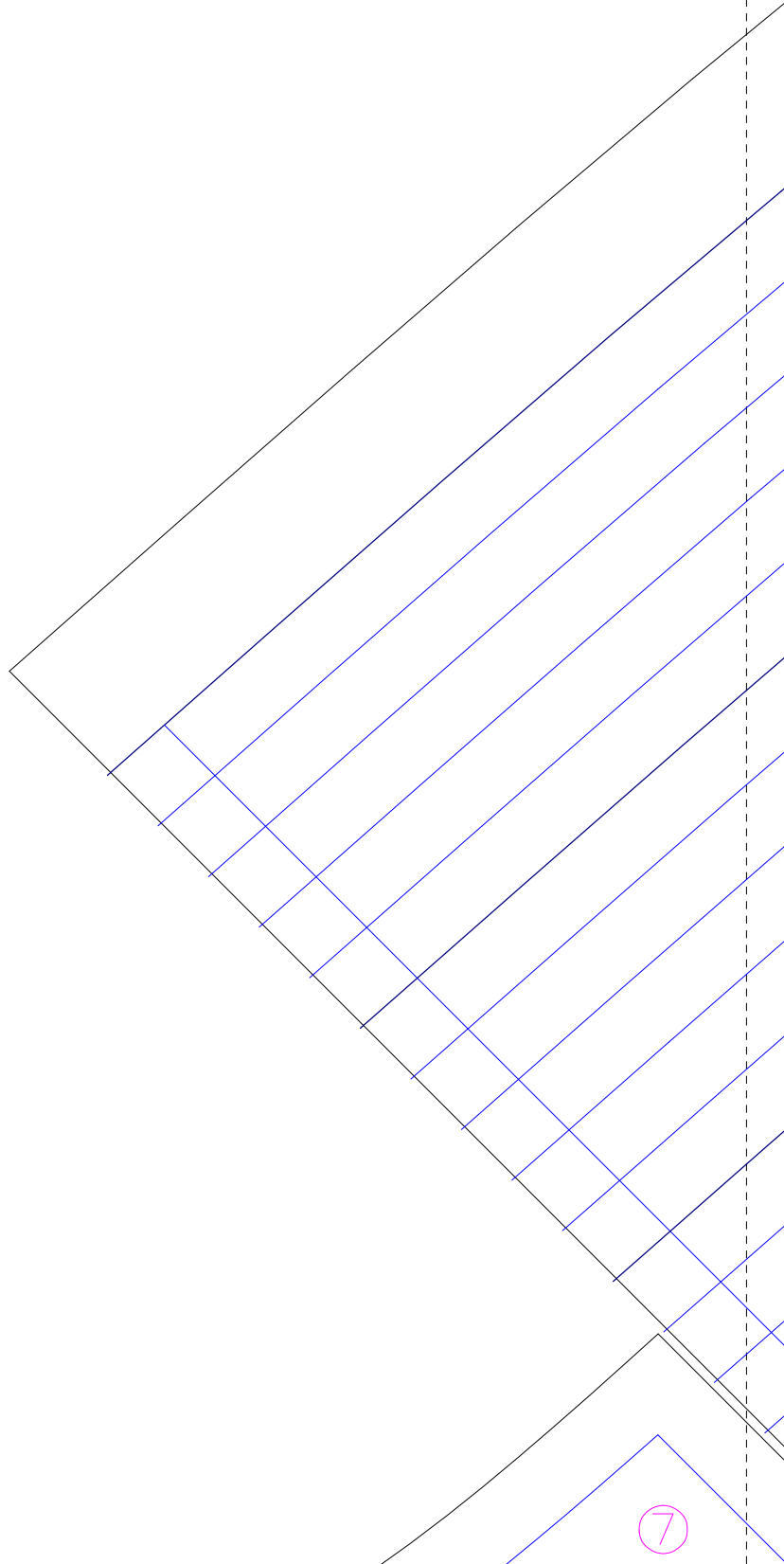
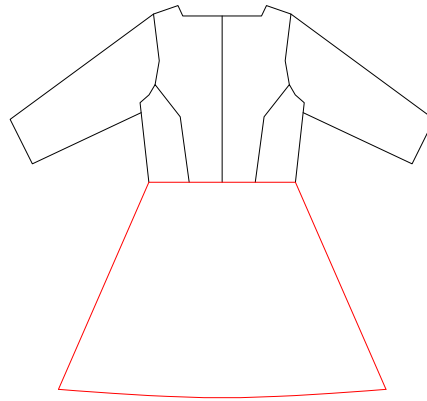


	6	12	18	23
1	7	13	19	24
2	8	14	20	25
3	9	15	21	26
4	10	16	22	27
5	11	17		



⑥



後ろフリルのワンピース

婦人Lサイズ

半円後スカート

左右対称に2枚

Back frill of dress

Back skirt

size L

× 2 (bilateral symmetry)

ファスナー止まり



縫い代・切り取り線
Seam margin

出来上がり・縫い合わせ線
Finishing line

地の目（生地縦の向き）
Direction of material.
Layer this line will parallel
with height of material.

ギャザーをよせる場所
Position where gather.

合印（縫い合わせの位置の印）
縫い代に5～7mmほど切り込みを
入れておくと縫い合わせがしやすいよ
Snip the material as a mark.

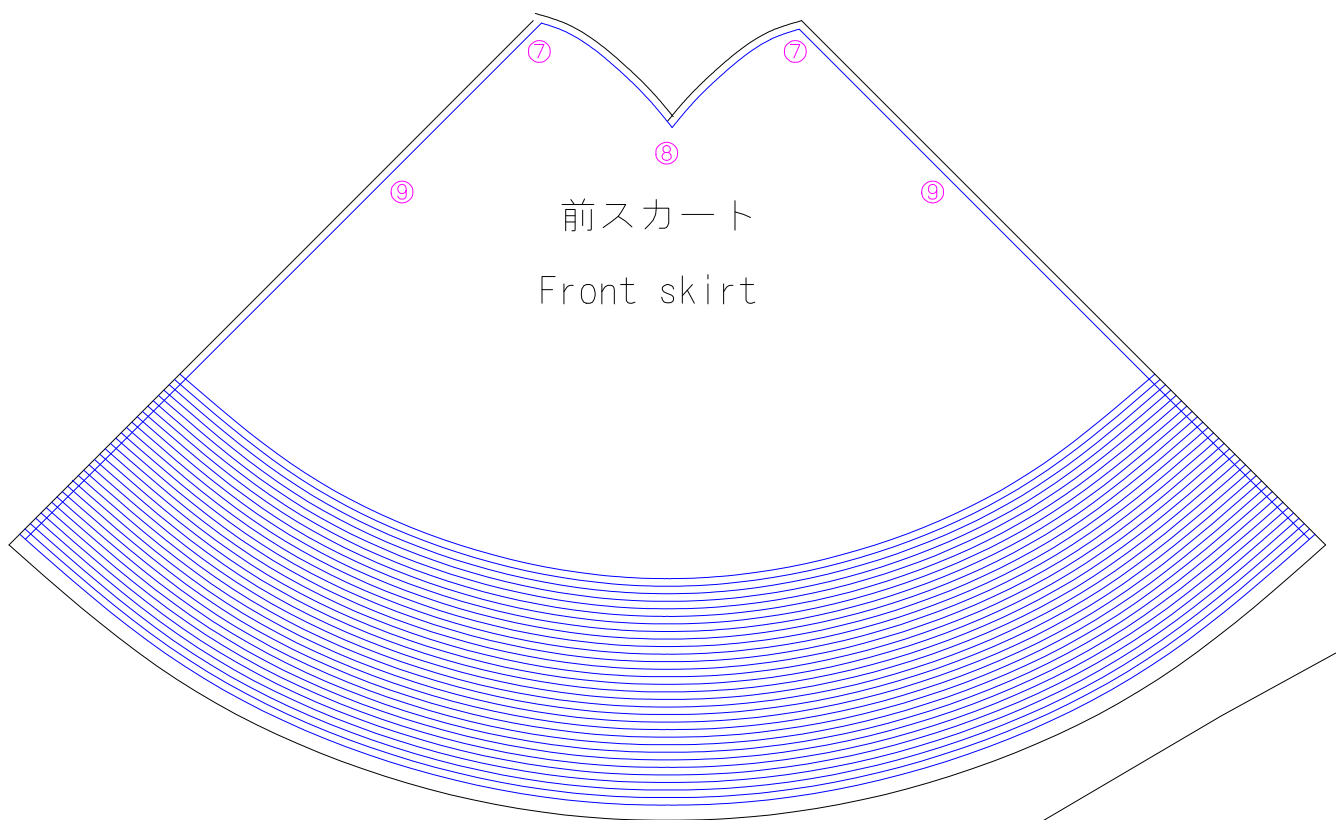
⑩

10分の1サイズです

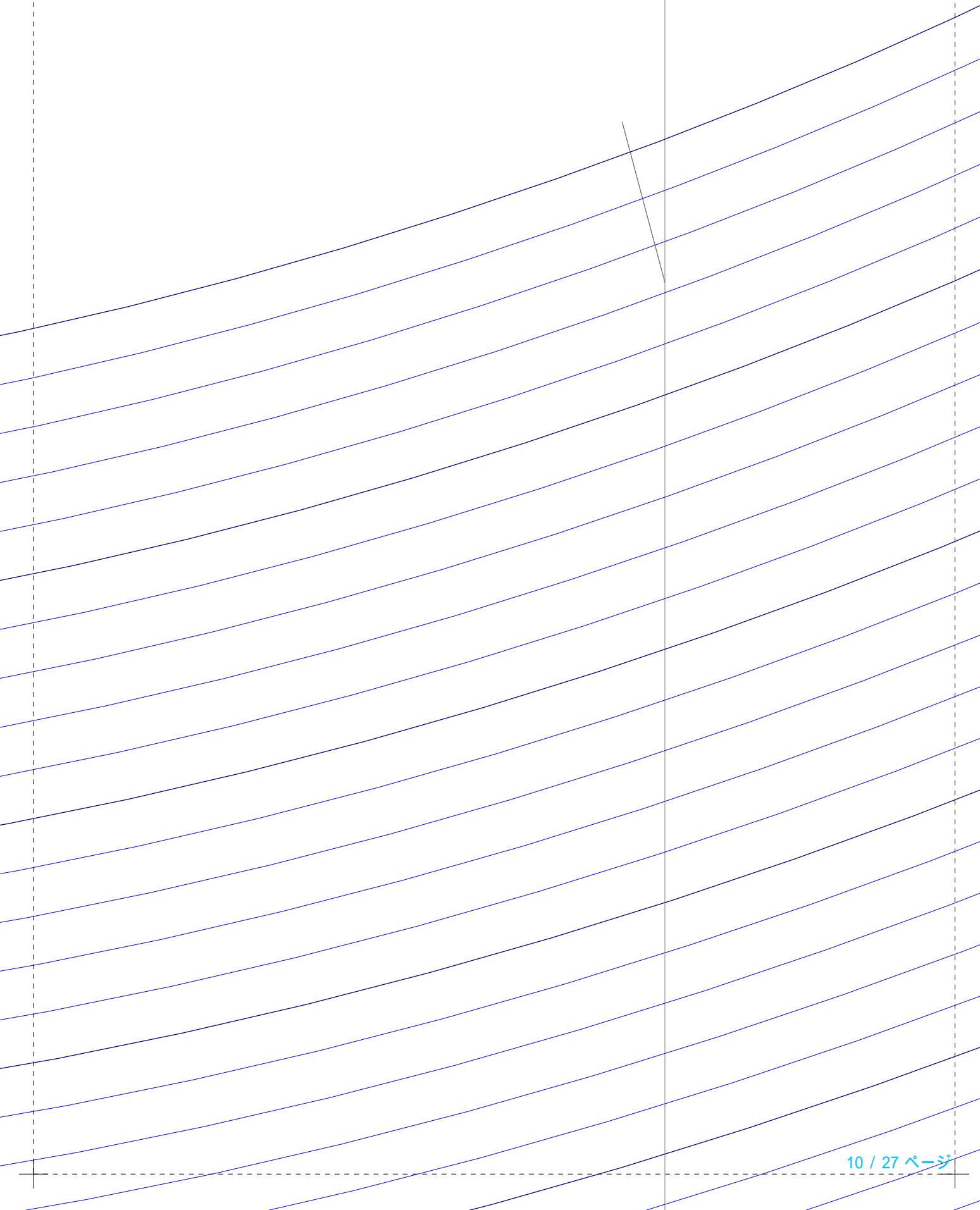
テープで貼り合わせると縫う手順がわかりやすくなります

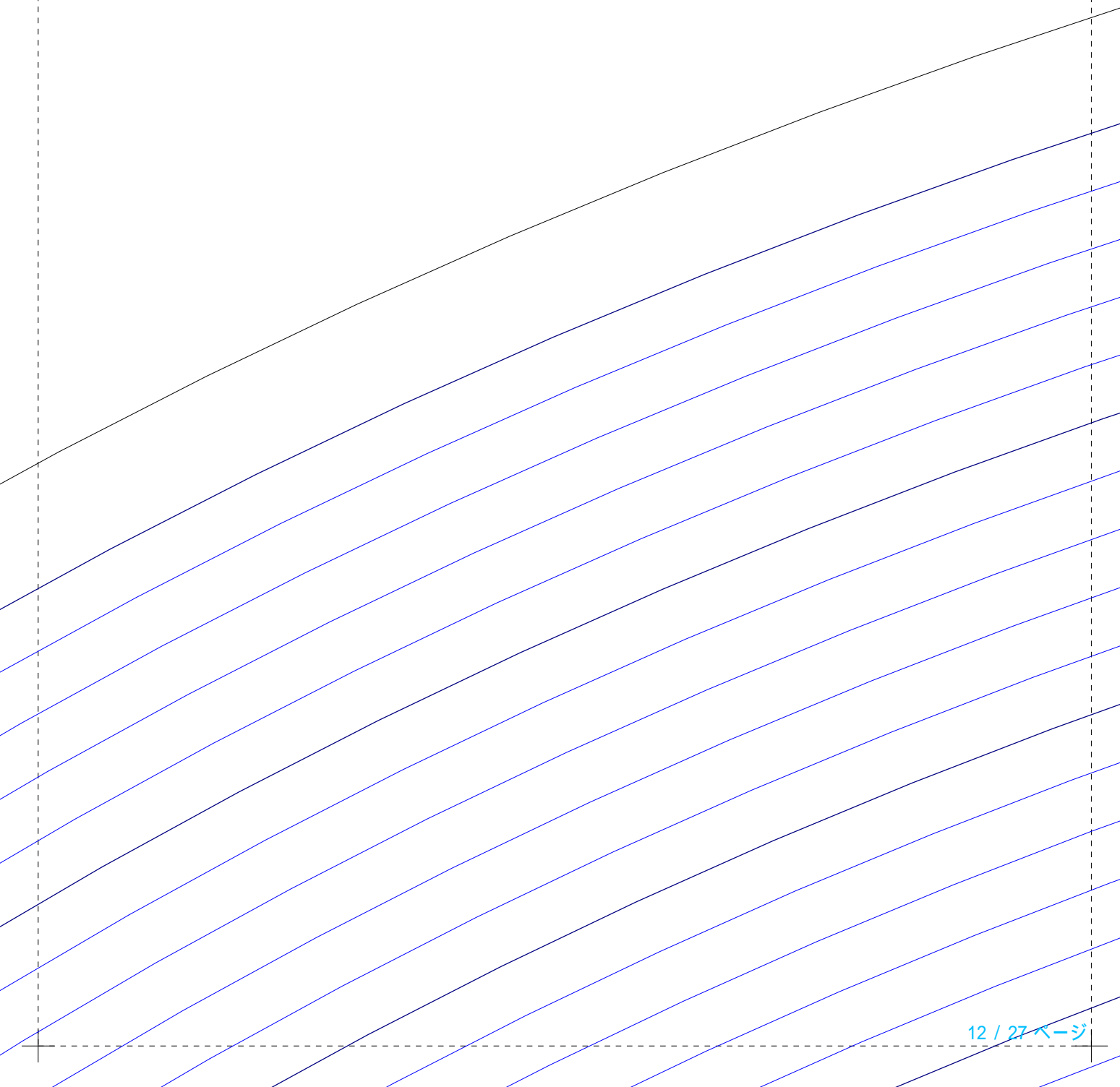
10分の1で書いた布幅の上に配置すると

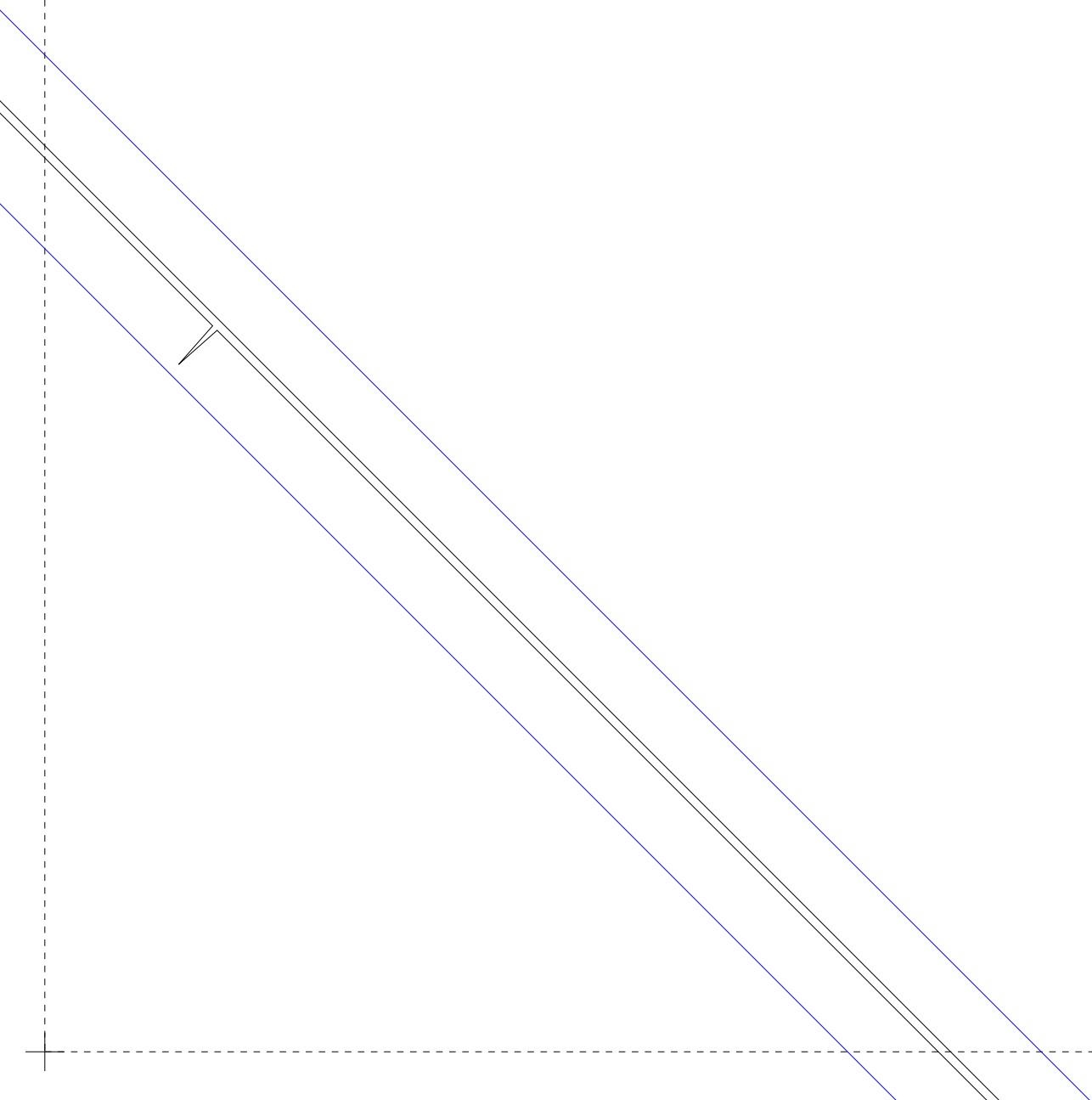
布の量の計算が簡単に出来ます



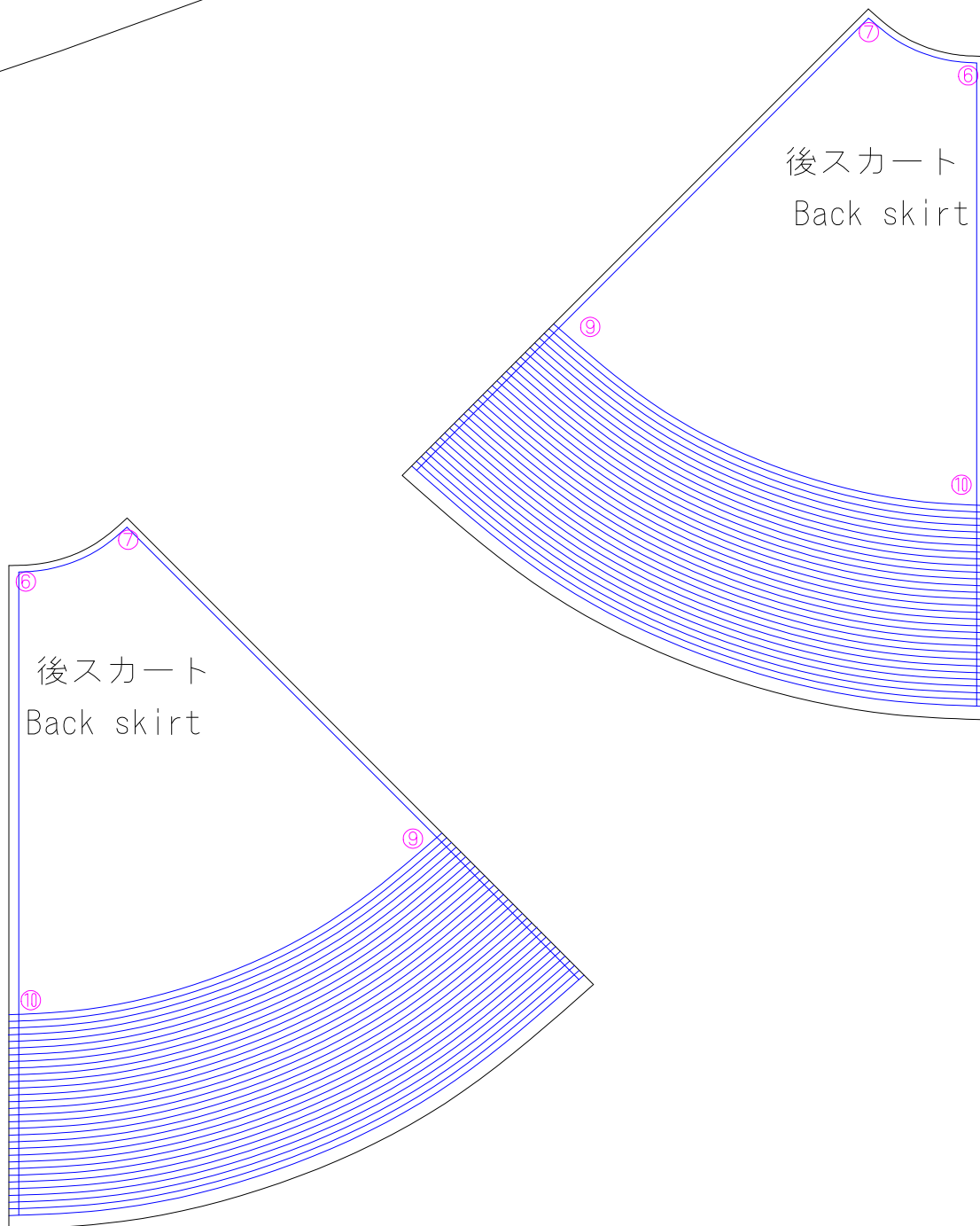
⑥

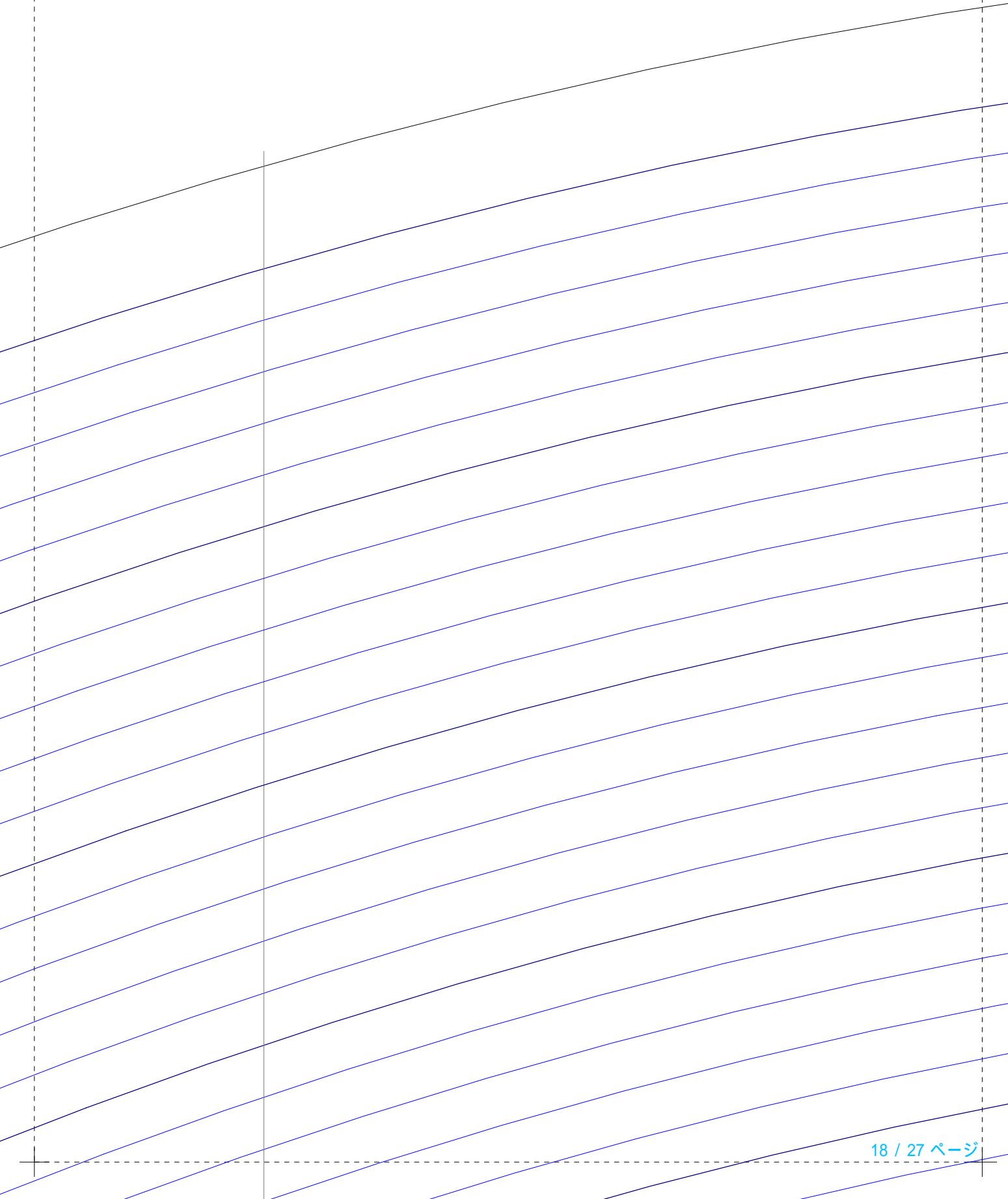


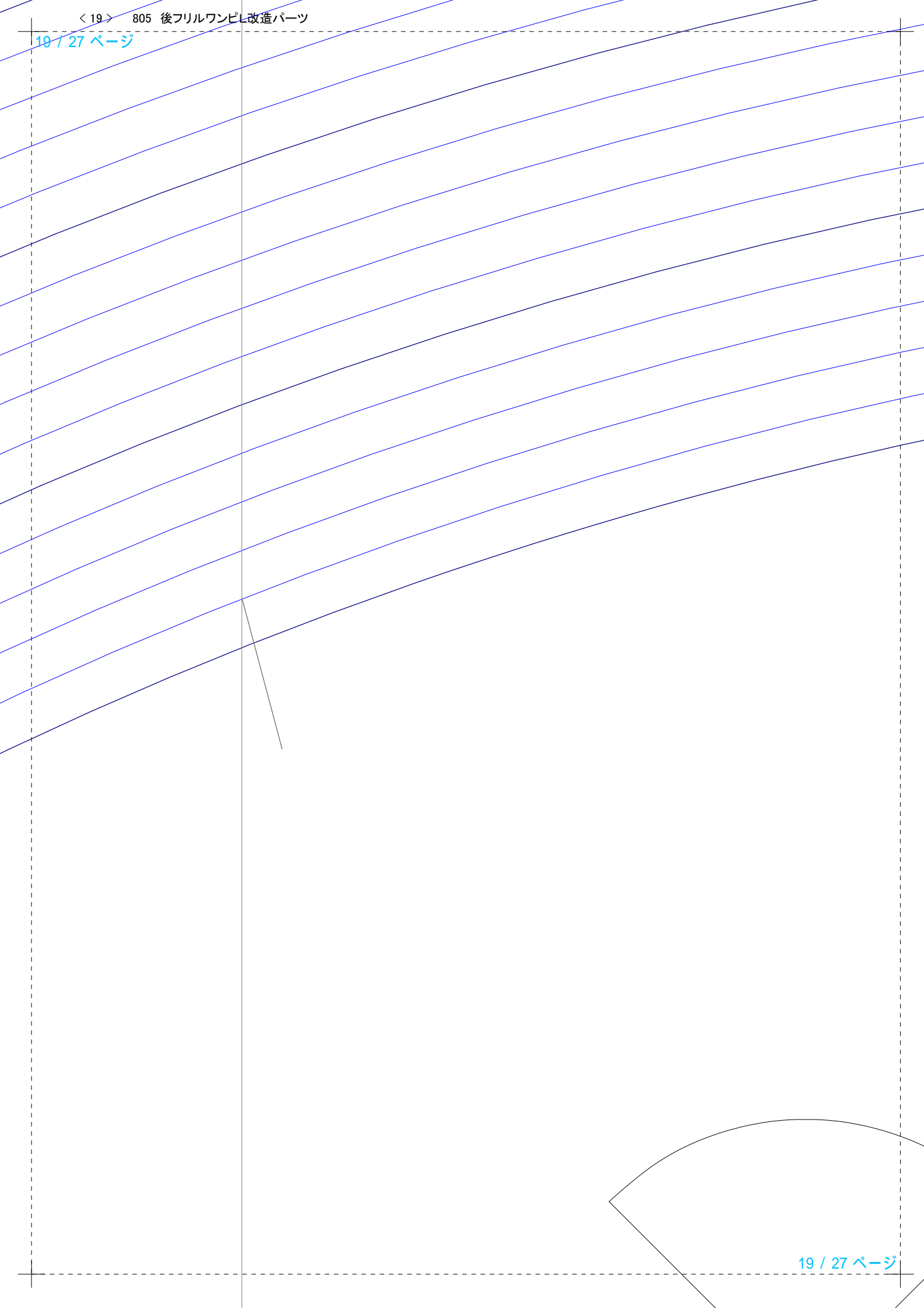




⑥





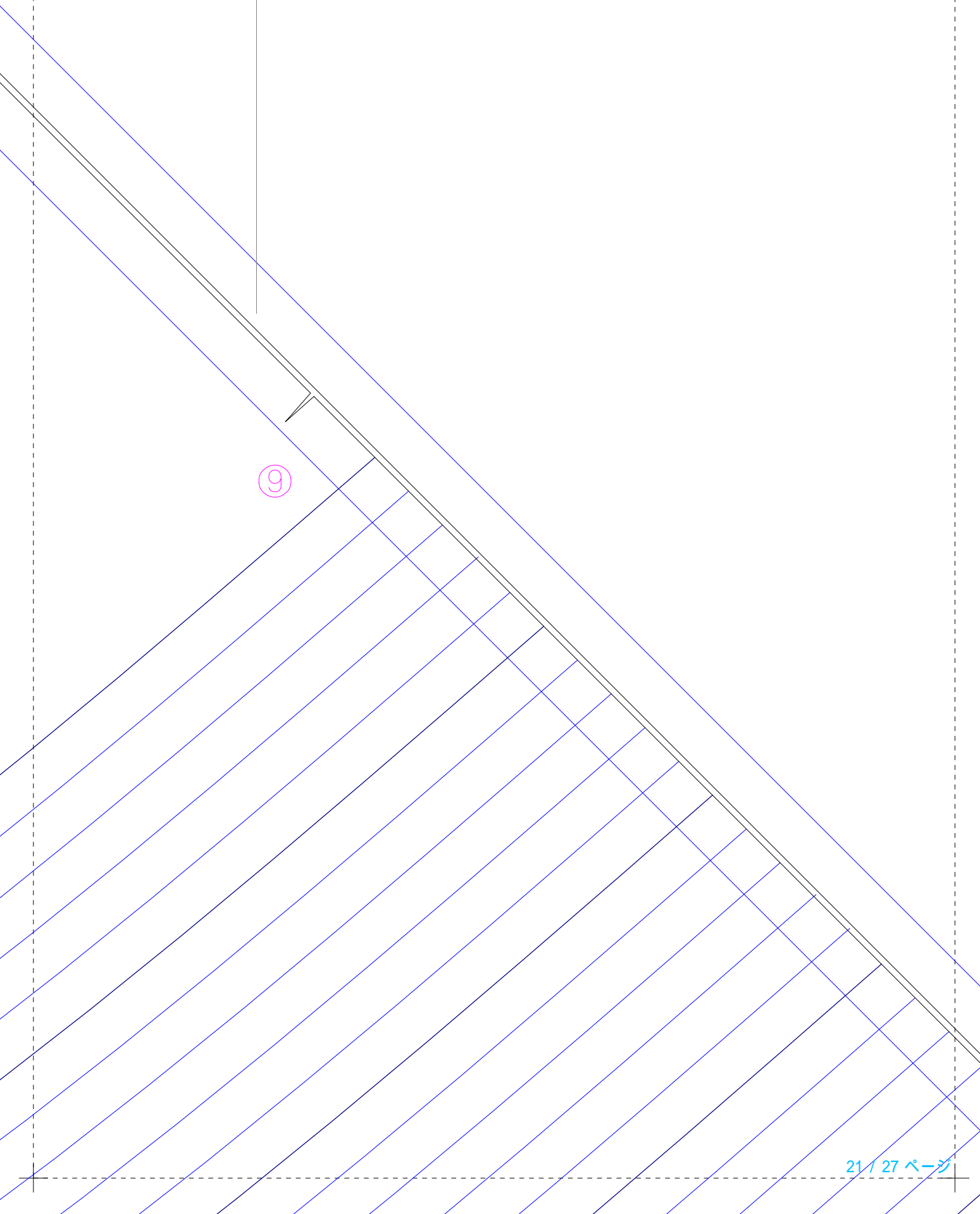
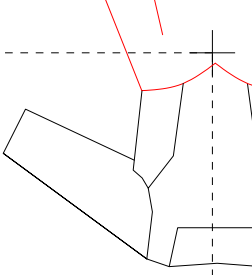


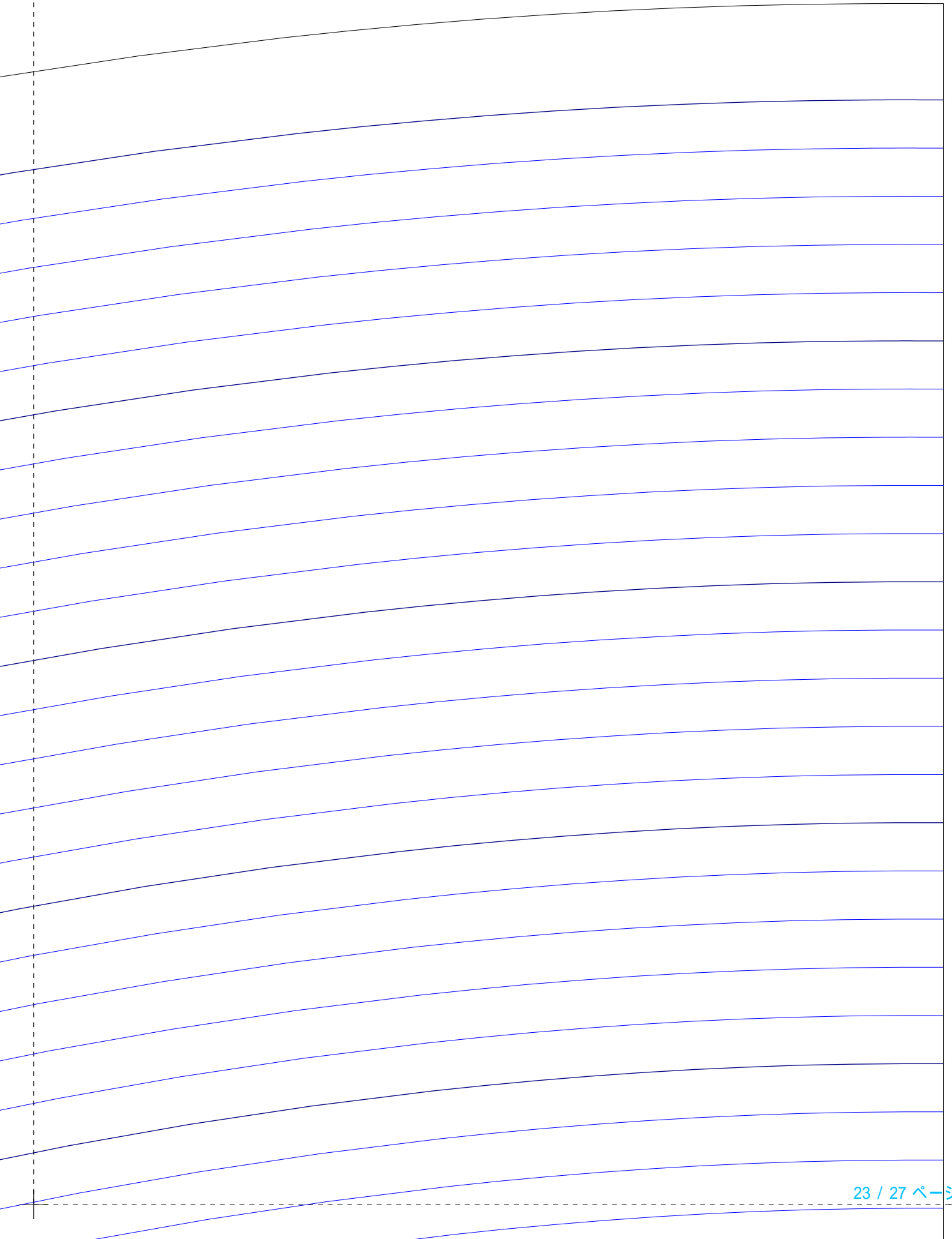
いすけ > 2C [A2]

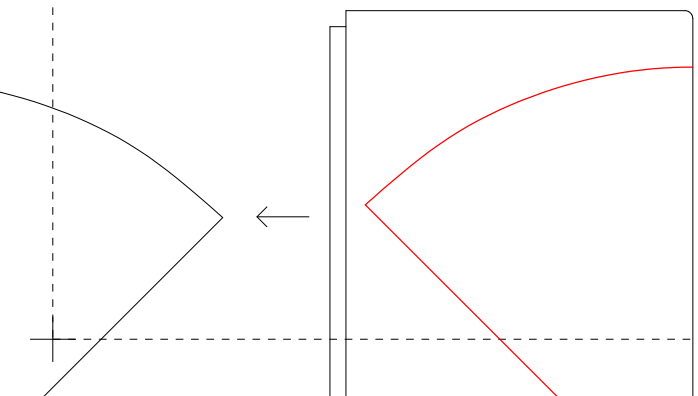
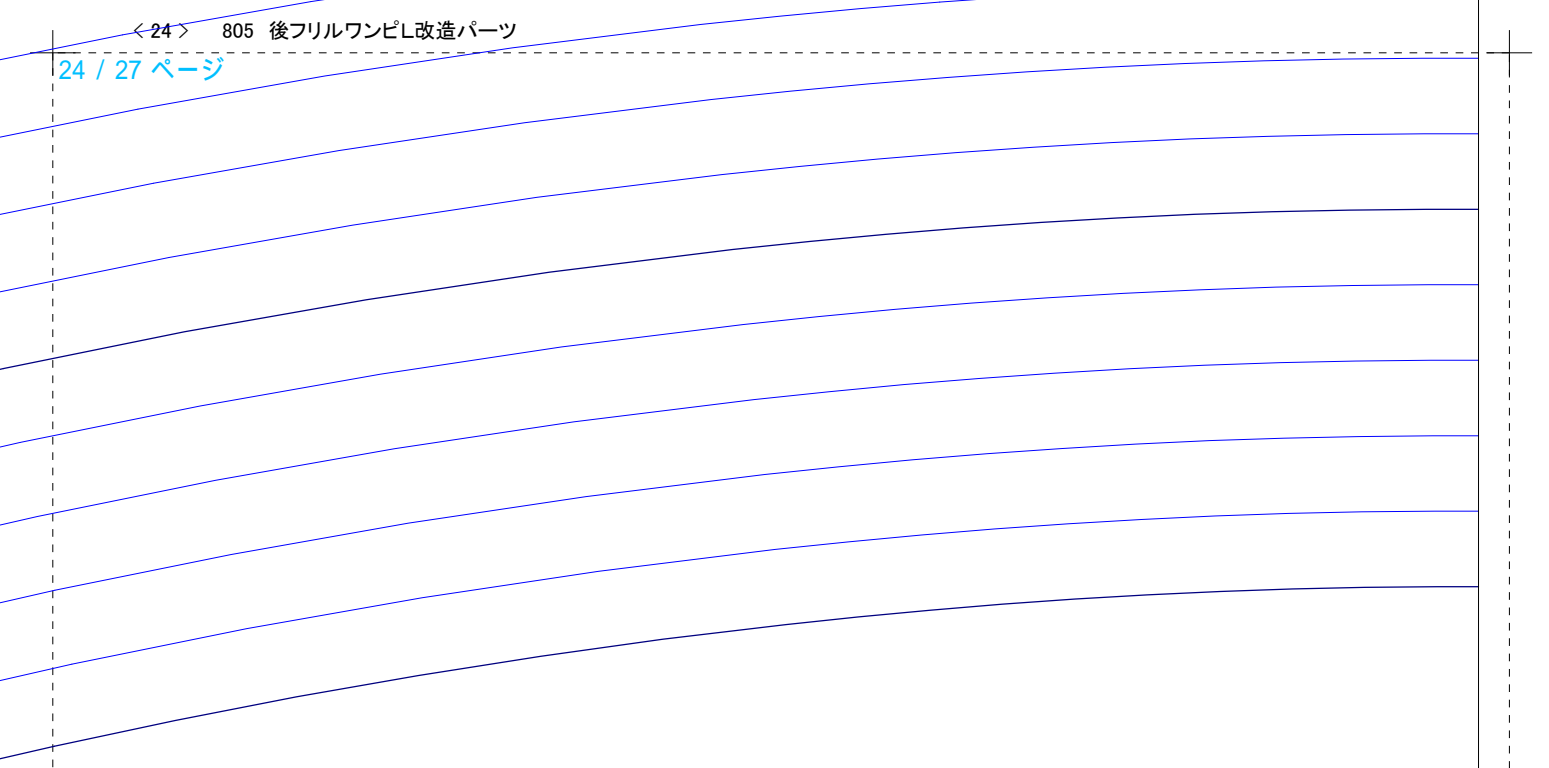
(Symmetry)

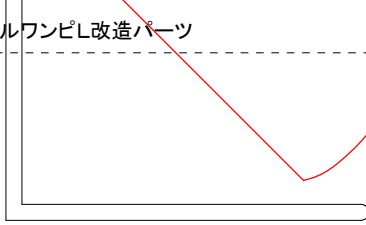
SS

Y — 〇



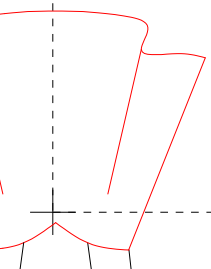


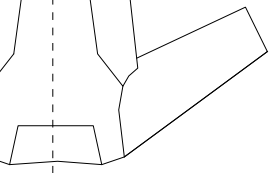




布の折り山に端を合わせて左右対称に切-

後ろフリルのワッフル
 婦人Lサイズ
 半円前スカート
 左右対称に2枚
 Back frill of dress
 Front skirt
 size L
 × 2 (bilateral symme





⑧

⑦

